

Junior College Squad Batters Spartan Line To Score Two Touchdown Win In Hard Game

Capt. Wool, Hubbard Star as State Loses Again

Sacramento Junior College out-battled a badly bruised and battered San Jose State varsity football team this last Saturday afternoon at Sacramento to win 12 to 0.

The game was hard fought, but Sacramento's advantage in weight was the margin between victory and defeat for the Spartans.

Bill Sims, quarterback, was the outstanding player for the Panthers. He was responsible for most of the long gains made against the Spartans.

Twice in the last half, Sims broke through the State line for long gains. On the first attempt, he swept around the right end for 35 yards and almost a touchdown.

Following this series of plays, the Junior College line held for several weeks. State advanced to the three-yard line.

With a touchdown in sight, State plunged, bucked and fought at the Panther line, but could not get through.

Each Walt Crawford started and Hubbard and Sam Felice at (Continued on Page Four)

To Play Here



Bernard Oeko is rapidly becoming recognized as one of the brilliant violinists of the day. Since 1925, when he was chosen from a great number to be soloist in the Philharmonic Orchestra of New York, he has forged ahead in the concert field, filling engagements from coast to coast with extraordinary success.

Times Increases

Keeping pace with increased activities on the campus in an attempt to cover the news of the college even more thoroughly, the TIMES will increase to two issues a week starting today.

Hereafter the paper will be issued each Tuesday and Friday at noon. This change has been planned from the beginning of the quarter last September.

This change to two papers a week is only made possible through the increased efficiency of an already hard-working staff, and a closer connection with the various departments of the college.

TWENTY-FIVE ATTEND PRE-LEGAL DINNER

"The practice of law is hard work," said Superior Judge Robert Syer, speaking at the dinner held at O'Brien's, by the San Jose State Pre-legal Club on Wednesday, October 21. Judge Syer was the guest speaker of the evening.

About twenty-five students and faculty members attended the dinner, and it was declared a success. Mr. Harrington, the debate coach at San Jose State, gave a short talk on debate.

Chest Drive Begins On State Campus Today

Dr. W. H. Poytress Sees Serious War Resulting from Existing Troubles Between Oriental Nations in Manchuria

Although it is quite difficult to analyze existing conditions in Manchuria, there are many possibilities of a serious war due to the material investments involved. Such was the belief of Dr. W. H. Poytress, head of the Social Service department of this college, when he addressed the Santa Clara Chapter of Reserve Officers of the United States at the Sainte Claire Hotel last Thursday evening.

Present hostilities arose from a clash a Japanese detachment had with Chinese outside the treaty territory this last September. With the Chinese crying "Get out Japan," and the Japanese refusing to withdraw as long as their interests in the treaty area are safeguarded and as long as the Chinese boycott all Japanese trade continued, the situation has become a deadlock.

Hugh Gillis Does Splendid Work in Staging "Houseparty" at College

One pleasant way of "praising with a faint damn" is to characterize an amateur dramatic production as "almost professional." Such a belittling comparison cannot be made of "Houseparty," San Jose Players latest presentation. Professional in atmosphere, directing and acting, the drama from the pens of Kenneth Britton and Roy Hargrave mark the apex of Players' presentations and of Hugh Gillis' directorial efforts since arriving here in 1929.

intervene providing the countries involved agree to it, but in this case Japan did not want the United States represented in negotiations. The countries concerned are Japan, Great Britain, Russia, and the United States.

Japanese investments in China are estimated at \$1,250,000,000, of which three-quarters are located in Southern Manchuria. Great Britain's interest, which is chiefly centered about Hongkong, practically equals that of Japan.

Great Britain has vast real estate investments and also controls 45 per cent of coastwise shipping in China.

Russia has forfeited several privileges in China, but still retains the Chinese Eastern Railway. The United States controls several oil companies and also has a large interest in public utilities.

Spartan Council Meets to Enlist Student Cooperation

JUNIORS-SOPHS HAVE COMBINED MEETING OCT. 29

The juniors and sophomores will meet for their third joint meeting next Thursday at eleven o'clock. The two classes meet separately, the juniors in room T104, and the sophomores in room T4, for the first half hour, and then meet together for the program.

The lower classmen are providing the entertainment for the meeting this week, and will probably bring out a more representative showing of their strength as a result. A sleight-of-hand artist is scheduled to appear on the program along with other features.

FLAGPOLE TO BE ERECTED AT FIELD

At the north end of Spartan field one of these days a brand new flagpole will be permanently rooted, and don't misunderstand, rooted. Dr. Sotzin of the industrial arts department is giving a project to his class to concrete the base of the pole at the field.

TO FLY PENANTS

Flying from a brass knob at the top will be an American flag and from either end of the yard will be colors of San Jose State and the opposing conference team. These emblems are being made by the girls in the Home-Making department, while N. O. Thomas is donating the national emblem.

Spartan Glee Club to Become Male Chorus

The Spartan Glee Club announces that it will continue its new plan of being a male chorus instead of a glee club. This innovation was introduced last year by its director, Mr. George T. Matthews, who organized the group in 1924, and has been considered very successful.

Directs Collections



ELIZABETH RYAN

Appointment Announced by President J. Horning

At the Spartan Council meeting held last Thursday in the Little Theater, President John Horning announced the appointment of Elizabeth Ryan to take charge of collecting the Community Chest pledges from all the organizations on the campus.

Miss Ryan is president of the Inter-Society Council, and is prominent in Alienian affairs, her numerous contacts among campus groups making it easier for her to enlist the support of the various societies and fraternities. It will be Miss Ryan's duty to attend all Chest luncheons and report on the progress made at the college.

BECAUSE THIS IS AMERICA—GIVE

All money will be turned in to Miss Luella Hayes, secretary to the president, and she will thus be able to furnish the director of collections with all necessary data for the daily report.

FREE ORANGE JUICE 6:30 TO 11 A. M. DAILY

ALL FUNDS NEEDED

"College students should be the first to assume responsibility and I am zealous that every student in San Jose State contribute in some way to this great project of the Community Chest," said Dr. James C. DeVoss in a talk to the members of the Spartan Council Thursday noon.

He continued, "Above all other needs this year is the need for the emergency relief fund. There are more destitute people in America today than there ever was before, and consequently the demand is higher this year for us to do just a little deeper in our pockets than in previous years."

There is also an intellectual interest in the chest and it is to be hoped that our students will take the right attitude concerning this chest. According to Dr. DeVoss, it is true that the Community Chest is a poor makeshift, but right now it is serving its purpose. And no doubt in time it will be superseded by better organizations. Possibly and probably the state and county will take over the responsibilities that the Chest now assumes.

HEADS START WORK NOW

Heads of organizations have already started the drive for their particular organization. They are endeavoring to raise a greater amount this year than ever before. Reports given by Secretary Jean Byers show that over \$500 was raised from organizations last year. The amount varied from the \$100 from the freshman class to the lesser amounts of the smaller groups. But it isn't the individual amount that counts, it's the grand total.

Because This Is America—Give!

TODAY
Grand Opening of
Joe's Sandwich Shop

We invite you to inspect our new and modern Coffee Shop. We are successors to Tummy Yummy, featuring

30c Blue Plate Lunch
also MILK SHAKES and SOFT DRINKS

16 E. SAN FERNANDO ST.
Phone Ballard 8138

SUPPLIES FOR
BLOCK PRINTING
YOUR OWN
Christmas Cards

BLOCK PRINT PAPERS
Domestic and Imported Papers.
Large assortment, colors, textures, weights and designs.

PRINTING INKS AND BRAYERS
Printer's Ink and Water Color Inks
Sold in convenient size tubes—all colors.
Brayers (roller) for applying your inks.

LINOLEUM BLOCKS and CUTTING TOOLS
Large assortment sizes linoleum blocks
Mounted and milled to type height.
"Tif" sets of cutting tools.

Let us help you design
Your Own Christmas Cards

Curtis Lindsay
Books Stationery Engraving
17 EAST SANTA CLARA STREET
San Jose, California
Ballard 4288

LIGHT ENGINEER TO SPEAK HERE

As the guest of the Industrial Arts department and the local Chamber of Commerce, F. A. Hansen, Illuminating Engineer for the Halophane Manufacturing Co. will speak at the Little Theater tomorrow evening.

WELL BALANCED CAST

James Clancy as Alan, the lad who murders the girl who threatens blackmail over an illicit love affair, did the best piece of work he has yet done. Under Gillis' direction Clancy has developed from a promising actor with an unfortunate tenseness which robbed some of his most dramatic climaxes to a polished but natural actor of exceptional versatility.

Vegetarianism is something of a passion with Max Richling of Chicago U. Imagine his feelings, recently when he was called into the court of Judge Leon Edelman, accused of stealing a kettle full of soup, beef broth.

MOB HANDLING EXCELLENT

"As 'Hortense,' the feminine comedy lead, Edith Slade gave an amusing and effective interpretation of a difficult though well written part. Dick Glyer, playing opposite to her as 'Eddie Canby,' freshman fraternity pledge, also served excellently to lighten the heavier moments of the play.

THE VIRGINIAN'S SUCCESSOR

With all the polish of the performance, it is perhaps unfortunate that one who had read the play should be confronted with

Viola Gillis, as Florence, the

MOB HANDLING EXCELLENT

As "Hortense," the feminine comedy lead, Edith Slade gave an amusing and effective interpretation of a difficult though well written part. Dick Glyer, playing opposite to her as "Eddie Canby," freshman fraternity pledge, also served excellently to lighten the heavier moments of the play.

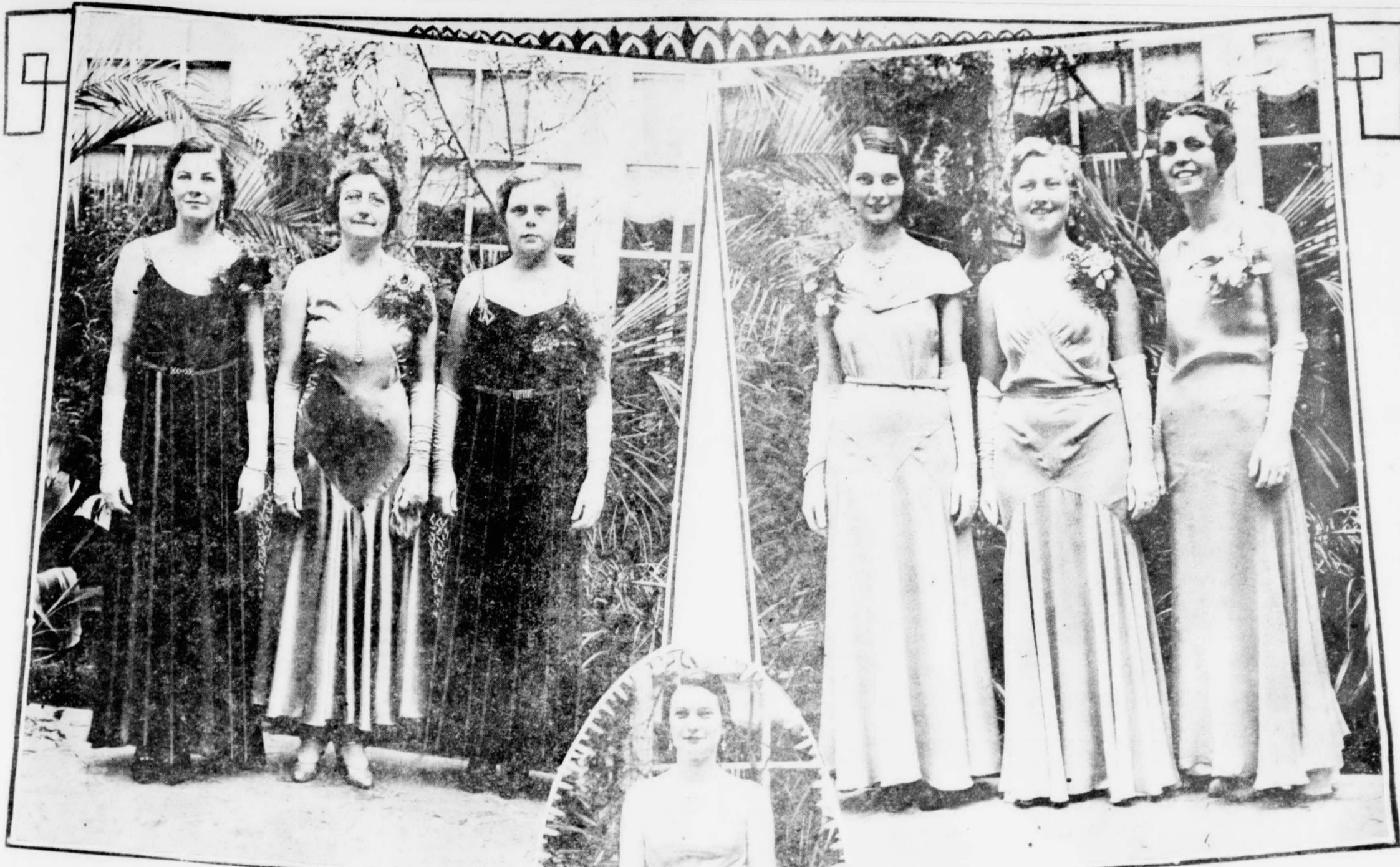
THE VIRGINIAN'S SUCCESSOR

With all the polish of the performance, it is perhaps unfortunate that one who had read the play should be confronted with

Viola Gillis, as Florence, the

SOCIETY SECTION

Inter-Society Council Entertains Sororities at Formal Tea



Miss Alice Palmer

Dean Helen Dimmick

Miss Barbara Blauer

Miss Marion Welles

Miss Ruth Montgomery

Miss Nadine Thompson



Miss Elizabeth Ryan

Hotel St. Claire Scene of Annual Tea Given Sororities By Inter-Society

At a formal tea given in the Cafe Esplandido of the Hotel Sainte Claire, the Inter-Society Council was hostess to the societies Thursday, October 15th. The tea was a charming affair, the autumn colors with which the tables were decorated forming a lovely background for the formal evening gowns of the guests. Fall flowers and leaves in shades of brown and orange, carried out the autumn theme.

Those who were in the receiving line to welcome the guests were the Misses Elizabeth Ryan, president of the Inter-Society Council; Nadine Thompson, vice-president; Marion Welles, secretary; Barbara Blauer, treasurer; Adele Melone, reporter; Helen Dimmick, dean of women; and the president of each sorority, the Misses Claribel Pomeroy, Phi Kappa Pi president; Alice Palmer, Alpha; Nadine Thompson, Epsilon; Barbara Blauer, Sappho; and Marion Welles, Beta Gamma Chi. The chaperones were the Mesdames MacQuarrie, Snyder, Joy, and Miss Dimmick.

The Inter-Society tea formally closed the rushing season of the societies and the pledges were announced. The Allenians announced the following girls as pledges: The Misses Barbara Perrin, Phyllis Walsh, Ruth Raymond, Alta Miller, Marion Noonan, Marion Dowdy, Blanche Miller, Lorna Baker, Eleanor Larson, Eleanor Roberts and Jane Elliott.

The Ero Sophians: The Misses Marion McColey, May Monahan, Jeanne DeVoss, Vivian Young, Roselyn Cavala, Ruth Hoover, Birdella Hill, Phyllis Starbird, and Pat Henney.

Phi Kappa Pi: The Misses Ruth Adele Roberts, Virginia Williams,

Leana Fischer, Lois Hill, and Fern Hill. Sappho: The Misses Geraldine Christmas, Marjory Gould, Marjory Duncan, Catherine Dooling, Elizabeth Fisher, Dorothy Rifenburg, Peggy Pascal, Elizabeth Knapp, Nancy Sawyer, Dorothy Turner, Emily Breen, Barbara Bruch, Mildred Brunschweiler, and Dr. Kuntz.

Beta Gamma Chi: The Misses Betty Monahan, Juanita Jensen, Florence Hamillal, and Frances Eckridge.

San Jose Players To Ride Trolleys To Alum Rock

In keeping with the depression that they have heard so much about, the San Jose Players decided last Monday noon that their annual Halloween party will be a depression dance to be held on October 30, in the Alum Rock dance pavilion.

Old clothes are to be worn instead of the usual costume, and the entire crowd is to go on old street cars to the park, where the entire evening will be spent in dancing, drinking water and eating hard-tack.

This is a new idea for Players' party, and since each player is allowed to bring one guest, all are expected to witness the violent exit of old man depression.

Will all people who received their J. C. last year please call at Mrs. Scott's office in room 103 for their certificates.

Economics is still in a backward state and economists have not yet earned the right to be listened to attentively.—John. Maynard Keynes, English economist.

French Club Chooses Officers for Year; Plans Fall Activities

At the first meeting of the French Club held this year, the following officers were elected: President, Emma Faxon; vice-president, Blanche Miller; secretary, Leonard Risina; treasurer, Fraul Yearian; reporter, Alice Echante.

The newly-elected officers of this organization, which has in the past two years gained for itself the reputation as one of the most active of its kind on the campus, have already made plans for many interesting meetings, and affairs, and plays. With such an increase in the number of students in the advanced French classes, and in the list of alumni, very good material for these plays will be available, and they promise to be entertaining events.

A new ruling is in order concerning those who may attend the affairs of the French Club. All Alumni may become active members, and, of course, all French students, but membership has been denied to all off-campus people, as there are so many members of the French classes. Students not taking French in the College, but having an active interest in the language, and in promoting a better knowledge of it, may attend the affairs by special permission of the Council of the Club, which consists of a representative from each French class, and the officers, and carries on the executive work of the club.

Definite plans are already in order for the first affair, a Halloween Party on October 26, so all those who are eligible to become members of the club, and would like to attend the party which promises to be a very enjoyable one, are advised to join the membership list immediately.

Industrial Arts Fraternity Discusses Plans for Activities of Year at Dinner

Iota Sigma Phi, industrial arts fraternity, held its second meeting of the year last Monday evening. Perry Stratton, president of the organization, appointed a committee to investigate plans which concern the construction of concrete benches near the archway adjoining the walls of the entrance of their department.

The club, which at present is local, has been invited to become affiliated with a national industrial fraternity. The organization, however, has not, as yet, made a decision as to what it will do.

Fraternities Authorized By Administration Published by Dean

In his Presidential Parley last week, Dr. MacQuarrie spoke of the organizations which are not officially recognized by the college administration. In order that the students might know which organizations are authorized by the student body, the following list is published:

- Spartan Knights
- Pre-Legal Frat
- Cosmopolitan Club
- Senarab (De Malay)
- Sigma Gamma Omega
- Tau Gamma
- Tau Delta Phi
- Iota Sigma Phi
- Sigma Kappa Alpha
- Kappa Delta Pi
- Delta Phi Upsilon
- Phi Mu Alpha
- Black Masque
- Phi Ed Majors
- Delta Nu Theta
- Alpenion
- Beta Gamma Chi
- Ero Sophians
- Phi Kappa Pi
- Sappho
- A. W. S. Council.

Art Department Faculty Gives Novel Tea Today

An African hunt with wild animals and jungle scenery will be the motif of the decorations at the tea given by the Art Department faculty on Tuesday afternoon. The decorations have been designed by the Expression classes and are in keeping with the day, which is Theodore Roosevelt's birthday.

The affair is to be in the form of a house warming and all of the rooms in the Art Building will be open to the guests, who will be the members of the faculty.

Associated Women Students Meet; Plans for Coming Year Discussed

About two hundred girls were present at the A. W. S. assembly which was held on Tuesday at 11 o'clock. In the absence of President Berta Grey, Lillian O'Hanlon presided at the meeting. Announcements concerning the work of the Y. W. C. A. and the W. A. A. were made. Many girls who wished to become active members were signed up.

The W. A. A. skating party was announced for Monday night at 8 o'clock. All girls are invited to this party and the small charge of 25 cents is asked. In an effort to support the Sacramento-State football game Saturday, it was announced that if enough girls would sign up special rates would be available for the transportation.

The A. W. S. Council was introduced for the benefit of new students. The program which was very well received consisted of several numbers by Herbert Miller, saw solos by Elmore Gray, and a section of "Midsummer Night's Dream," Pyramus and Thisby, by Mr. Newley.

Japanese Speaker Is Guest at Meeting of Cosmopolitan Club

Cosmopolitan Club held its first meeting of the year with Audrey Batchelor presiding. Room one of the Home-Making building was chosen for the luncheon, which was attended by over forty people. Mr. Yamada, who was visiting the college Thursday with the jujitsu students from Japan, was the speaker. He held the interest of the group by relating some of the traits of his native country. Among other things he said that English is spoken a great deal throughout Japan. Mr. Yamada also introduced his fellow students from the Far East.

The next meeting of the club takes place in two weeks. Again the luncheon will be held in the Home-Making building. A cordial invitation has been extended to everyone to attend.

Gandhi dares to apply the Sermon on the Mount in politics.—Sherwood Eddy.

Bel Canto Initiation At Hotel Sainte Claire

At a charming buffet supper and bridge held at the Sainte Claire Hotel on Wednesday evening, October 21, about twenty-five new members of Bel Canto were formally initiated.

Yellow and white, the Bel Canto colors, were predominant in the color scheme for the decorations, being carried out by flowers, favor, and little cakes.

A delightful program was enjoyed and the remainder of the evening was spent playing bridge.

Mrs. Mattie O. Joy Returns to Duties

Mrs. Mattie O. Joy, appointment secretary, returned to her duties last week after a two-months' illness and convalescence. Mrs. Joy wishes to thank all of the teachers and members of the student body who have been so extremely kind during her absence.

