

Spring 2012

## Library News, Spring 2012

San Jose State University Library

Follow this and additional works at: <https://scholarworks.sjsu.edu/libnew>



Part of the [Library and Information Science Commons](#)

---

### Recommended Citation

San Jose State University Library, "Library News, Spring 2012" (2012). *Library News*. Paper 8.  
<https://scholarworks.sjsu.edu/libnew/8>

This Newsletter is brought to you for free and open access by the Library at SJSU ScholarWorks. It has been accepted for inclusion in Library News by an authorized administrator of SJSU ScholarWorks. For more information, please contact [scholarworks@sjsu.edu](mailto:scholarworks@sjsu.edu).



SAN JOSÉ STATE  
UNIVERSITY

KING LIBRARY

The Dr. Martin Luther King, Jr. Library represents a unique collaboration between San José State University and the City of San José. Since 2003, the library has combined academic and public services in the nation's largest joint library. Serving as both the university library for San José State and the main branch of the San José Public Library System, the King Library provides resources and services for a lifetime of learning.



## Introducing the Jennifer & Philip DiNapoli Gallery

### IN THIS ISSUE

DiNapoli Gallery dedicated	1
Message from the dean	2
Donor appreciation	2
Coming events and exhibits	3
New library databases	4
Beethoven Gateway	5
Library Channel	5
Dinner with the Dean	6
NEH challenge grant	7
New development director	7
Acceleration campaign	7
You can make a difference	8

*LibraryNews* is published by the SJSU King Library. For more information, visit the library website at [library.sjsu.edu](http://library.sjsu.edu).

**Editors:** Elisabeth Thomas and Bridget Kowalczyk

**Contributors:** Dave Daley, Patricia Stroh, John Wenzler

In January 2012, the King Library's second floor art gallery space was dedicated and renamed for two prominent Silicon Valley philanthropists, Jennifer and Philip DiNapoli. An extremely popular and highly visible gallery, this space hosts educational, thought-provoking and inspirational art exhibits for the entire community.

The DiNapolis are devoted and generous SJSU King Library supporters. As longstanding participants in civic and philanthropic engagement in the Silicon Valley, they appreciate the important role the humanities play in the community. Jennifer DiNapoli is a member of the library's Volunteer Campaign Committee, in conjunction with the university's Acceleration: The Campaign for San José State University. She was also a founding member of the University Library



**Top:** "Manimal Kingdom—Human Influence on the Wild," by artist Tamar Assaf, exhibited in the DiNapoli Gallery through January 2012.

**Above:** Philip and Jennifer DiNapoli.

Leadership Council. The DiNapolis' support is a testament to their passion for the role libraries play in an enlightened society and a demonstration of their love for the King Library.

For coming exhibits at the DiNapoli Gallery, see page 3. ♦

### DID YOU KNOW?

The SJSU King Library is on Facebook, Twitter and Google+.

## MESSAGE FROM THE DEAN



Happy 2012! I want to thank everyone for their commitment and contributions to the San José State University library over the past year. We could not have accomplished so much without our supporters. It was wonderful to have the opportunity to speak with many of you at our last annual Dean's List dinner, which featured lively author presentations from our very own SJSU emeriti faculty Thomas Layton and

Arlene N. Okerlund. If you were unable to attend, you can read more about the event on page 6.

I am proud to announce a new layout for the university library website, which has been redesigned to align with the university's website ([www.sjsu.edu](http://www.sjsu.edu)). We've added an exciting new feature, the Library Channel, where viewers can watch recordings of library events or hone their research skills with online tutorials created by our library staff. You can learn more about this resource on page 5.

Upcoming events for the spring semester include First Wednesdays, a public lecture series sponsored by King Library Special Collections. Information on this series and all upcoming free events at the King Library can be found at [library.sjsu.edu/events](http://library.sjsu.edu/events).

This year, one of our top fundraising priorities continues to be building our digital humanities collection through our matching grant from the National Endowment for the Humanities (NEH). To get a progress report on our accomplishments, see page 7.

On the back cover of this newsletter, we spotlight the Library Science Collection Endowment. Contributions to this endowment will help build a collection of library resources that directly supports students in the SJSU School of Library and Information Science. This graduate program, the largest of its kind in the world, provides education to future librarians and information specialists using cutting-edge technology.

As you plan your charitable giving for 2012, please consider giving to the NEH challenge grant, establishing a collection endowment or making a contribution to an already existing endowment fund. Library endowments support efforts to build a collection of digital and print resources that meets the same level of excellence as the award-winning King Library building.

—Ruth Kifer, SJSU Library Dean  
408-808-2419  
[ruth.kifer@sjsu.edu](mailto:ruth.kifer@sjsu.edu)

### DID YOU KNOW?

The use of ebooks has almost tripled in the last year, from 244,713 hits in 2010 to 712,861 hits in 2011.

# Thank you to all our library supporters

I would like to extend a warm thank you to every one of our university library donors. Your support makes it possible to offer quality services and resources to our King Library users.

A very special thank you to members of the University Library Dean's List, those who have contributed \$1,000 or more to the SJSU library over the course of a calendar year. These lead supporters are helping the library stay true to its mission, providing the university and local communities with resources and services for a lifetime of learning.

**Consider becoming a Dean's List member and joining our leadership donors.** To learn more, contact SJSU Library Dean Ruth Kifer at 408-808-2419 or [ruth.kifer@sjsu.edu](mailto:ruth.kifer@sjsu.edu).

### 2011 Library Dean's List

Alexander Street Press, LLC \*  
Archer Family Foundation\*  
Miguel Avila & Lucia Soares  
Phil & Jennifer DiNapoli\*  
Shirlee DiNapoli Schiro\*  
Rod Diridon, Sr.  
Friends of Dr. Martin Luther King, Jr. Library\*  
Bobbe George\*  
Gene & Mary Goldberg\*  
Lionel & Bernadine Goularte\*  
Clifford Johnson\*  
Kline Family Foundation\*  
Panelpha L. Kyler\*  
Donald & Sally Lucas  
Regis & Dianne McKenna

Elizabeth Messmer\*  
Frank & Patricia Nichols\*  
Mary Nino\*  
Arlene Okerlund\*  
Olander Family Foundation  
San Jose Water Company\*  
Gregg & Karen Saunders\*  
Jack & Mary Lou Taylor\*  
TOSA Foundation  
Margaret Valentine\*  
Peter & Diane Werp\*  
Kenneth & Nancy Wiener\*

\* Contributor to the university library's National Endowment for the Humanities challenge grant.

# Coming events and exhibits

For more information about these and other public events, visit the King Library website at [library.sjsu.edu/events/](http://library.sjsu.edu/events/).



## "Ink, Paper, Brush and Binding"

February 1–July 31

Special Collections lobby, fifth floor

This fine art exhibit draws on the Special Collections & Archives department's rich collection of watercolors, ink and woodblock printing, and fine press artist books. Works include pieces from SJSU faculty and students, and California artists from the twentieth century such as prominent landscape artists Gregory Kondos, George Bruyere and Don David.



## "The Japanese Sword: Ancient Tradition, Living Culture, Modern Art"

February 20, 6–8 pm

Rooms 225–229, second floor

Paul Martin, author and former staff member of the British

Museum, will present a lecture on the history and construction of the classic Japanese sword. Prized as much for its artistic beauty as for its amazing cutting ability, the Japanese sword is one of the most recognized symbols of Japan and its warrior class, the Samurai.

## Friends of the King Library book sale

February 25 and 26

March 31 and April 1

Caret Plaza, university entrance to library

One weekend each month, the Friends of the King Library host a book sale, donating revenues to the library for a variety of programs that benefit the community. Saturday sales run from 10 am to 5 pm, and Sunday sales run from 1 to 5 pm. For more information, call 408-808-2681.

## "Recollections: Art of the Iranian American Community"

February 27–March 30

The Jennifer & Philip DiNapoli Gallery, second floor

This exhibit features paintings, photography and mixed-media works that highlight the art of the Iranian American community in the Silicon Valley.



## "Genes, Guts and Grit: The Legacy of Three Extraordinary African American Women"

February 29, noon–1 pm

Rooms 225–229, second floor

SJSU's Ruth Wilson, chair and associate professor of African American Studies, will provide an overview of three women "she-ros" in American history: Lucy Terry Prince, Maria Stewart and Henrietta Lacks. Their pursuit of life, liberty and happiness included extraordinary acts of courage, intellect, strength and generosity. Part of the University Scholar Series.

## "Great Originals on Originals": Two Fortepiano Trios by Beethoven and Conradin Kreutzer

March 14, 7–9 pm

Schiro Program Room, fifth floor

In this First Wednesday event, the King Library's Beethoven Center will present a performance of Beethoven's *Trio for Clarinet, Violoncello, and Fortepiano, Opus 11*, and Conradin Kreutzer's *Trio for Clarinet, Violoncello and Fortepiano in E-flat Major*. Performances include Eric Hoerich on clarinet, David Goldblatt on cello, and Gwendolyn Mok on fortepiano.



## "Revolution Revisited"

March 21, noon–1 pm

Rooms 225–229, second floor

SJSU's Kim Komenich, assistant professor of journalism and mass communication, will speak on "Revolution Revisited," his exhibit of photographs taken in the Philippines during the period leading up to the People Power revolution. Part of the University Scholar Series.



## "San José Jazz"

April 2–29

The Jennifer & Philip DiNapoli Gallery, second floor

This exhibit features photographs of jazz musicians and jazz-related topics by various local photographers.

## Readings by Steinbeck fellows John Newman and Kirsten Chen

April 3, 7–9 pm

Schiro Program Room, fifth floor

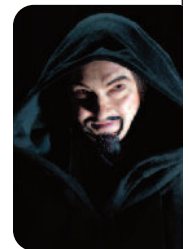
In this special First Wednesday event, the Steinbeck Center presents Steinbeck fellows John Newman and Kirsten Chen, who will read from their respective works-in-progress. A reception and question-and-answer session will follow.

## Opera San José's *Faust* preview and lecture

April 10, noon–1 pm

Rooms 225–229, second floor

This one-hour program will include performances of selected arias and duets by members of the *Faust* cast, followed by background on the opera moderated by Opera San José's general manager, Larry Hancock.



## "Physics and DreamWorks Animation"

April 25, 1–2 pm

Rooms 225–229, second floor

SJSU's Alejandro Garcia, professor of physics and astronomy, will speak on his work with DreamWorks Animation as a physics consultant on the film *Madagascar 3: Europe's Most Wanted*. Part of the University Scholar Series.



## "Midcentury by the Bay: A Celebration of the San Francisco Bay Area in the 1950s and 1960s"

May 2, 7–9 pm

Schiro Program Room, fifth floor

In this First Wednesday event, the California Room hosts a presentation by Heather David about the San Francisco Bay Area in the 1950s and 1960s.



# New databases enhance scholarly research

Electronic databases provide access to information and scholarly research in many disciplines. The university library subscribes to hundreds of online databases, and continues to add new databases to support faculty and student research. Like other library databases, the selected new resources below may be accessed from both the library's online catalog and the library's Articles & Databases web page at [library.calstate.edu/sanjose/](http://library.calstate.edu/sanjose/). Community users may access these resources when visiting the King Library.

## NEW LIBRARY DATABASES



**Alt Healthwatch** focuses on the many perspectives of complementary, holistic and integrated approaches to health care and wellness. It offers online full-text articles for more than 180 international journals and reports, of

which a large percentage are peer reviewed. In addition, there are hundreds of pamphlets, booklets, special reports, original research and book excerpts.

**Brill Dictionary of Religion** explicitly reflects the transformation that the academic study of religion has undergone within the last twenty years. This online dictionary contains more than 500 entries on the different theologies and doctrinal declarations of the official institutionalized religions as well as their role in daily life and public discourse. Volume 1: Aborigines–Dualism. Volume 2: Eastern Mediterranean–Martin Luther. Volume 3: Machine–Rome. Volume 4: Sabbath–Zoroastrianism.

The university library's license for the *Brill Dictionary of Religion* is supported by a grant from the National Endowment for the Humanities (NEH). Any views, findings, conclusions or recommendations expressed in this database do not necessarily represent those of the NEH.



**Ed/ITLib Digital Library** is an online resource for international peer-reviewed and published journal articles and proceedings papers on the latest research, developments and applications related to all aspects of educational technology and e-learning.

**Education in Video** is an online collection of more than 118 streaming videos developed specifically for training and developing teachers. The collection will eventually contain more than 1,000 video titles totaling 750 hours of teaching demonstrations, lectures, documentaries and primary-source footage of students and teachers in classrooms.



**Food Science Source** offers online full-text coverage of more than 1,300 publications relating to food industry issues such as packaging, processing, product development and safety. More than 1,000 key food industry and market reports are also included.

**The Johns Hopkins Guide to Literary Theory & Criticism** presents a comprehensive historical survey of the field's most important figures, schools and movements. It includes entries on critics, theorists, critical schools and movements, and the critical and theoretical innovations of specific countries and historical periods. It serves as an informative and reliable introduction to the principal manifestations of the large and challenging area of literary inquiry.

The university library's license for the *Johns Hopkins Guide to Literary Theory and Criticism* is supported by a grant from the National Endowment for the Humanities (NEH). Any views, findings, conclusions or recommendations expressed in this database do not necessarily represent those of the NEH.



**Nursing and Allied Health Collection** brings together online information found in 1,115 journals, with a strong emphasis on full-text titles cited in the *Cumulative Index to Nursing and Allied Health Literature (CINAHL)*. The collection meets the needs of researchers at all levels of nursing and all specialties, including vocational or licensed practical nurse, registered nurse, occupational health nurse, nurse practitioner, nurse midwife, nurse anesthetist and clinical nurse specialist.

**World Religions: Belief, Culture, and Controversy** covers religion around the globe, from prehistory to the present. It provides an overview of the major religions, new religions and nonbeliever viewpoints. Each major religion overview includes a general description and essays on specific religions, primary documents, timelines and glossaries. This resource offers comparative statistics on different world religions or different regions of the world, and an Idea Exchange captures contemporary discussions on religion and culture.

# Images accessible online through Beethoven Gateway

**M**ore than 600 images are now available online through the Beethoven Gateway, including portraits, engravings, and maps of Vienna and other important locations where composer Ludwig van Beethoven lived and worked. Also available are 17 first editions of works such as the *Hammerklavier* and *Waldstein* sonatas. The database is available to both the university community and the public. It can be accessed at [mill1.sjlibrary.org:83/search/](http://mill1.sjlibrary.org:83/search/).



The Ira F. Brilliant Center for Beethoven Studies on the fifth floor of King Library is the only museum and library for Beethoven research, performance and education located outside the composer's birthplace in Bonn, Germany. Founded in 1983, when Arizona businessman Ira F. Brilliant donated his superb collection of first editions to the university, the Beethoven Center has built a diverse collection that includes art objects and prints depicting Beethoven and

his contemporaries, as well as original manuscripts and documents such as concert programs from Beethoven's time.

The Beethoven Gateway, formerly known as the Beethoven Bibliography, is a research database and portal to digital resources on the composer that is freely available on the web. In 2010, the King Library's Beethoven Center initiated a project to add images to Beethoven Gateway, scanning the Beethoven Center's manuscripts, first editions and art prints. These scans were then uploaded to the database, making it possible for anyone in the world to view, print or download the images.

The Beethoven Gateway is an ongoing digital project funded largely by the Give Beethoven's World to the World sponsorship program. Individual donors may choose to sponsor a particular work or type of image. For more information about sponsoring materials for the Beethoven Gateway, visit [www.sjsu.edu/beethoven/bbd/bg\\_sponsors.html](http://www.sjsu.edu/beethoven/bbd/bg_sponsors.html). If you have questions about the Beethoven Center or the Beethoven Gateway, contact Patricia Stroh at 408-808-2059 or [patricia.stroh@sjsu.edu](mailto:patricia.stroh@sjsu.edu). ♦

## Tune in to the Library Channel

**Tune in to the Library Channel, the newest feature on the university library's website ([library.sjsu.edu/library-channel](http://library.sjsu.edu/library-channel)). From the Library Channel, watch recordings of special events filmed in the library as well as brief tutorials on navigating library resources.**

Featured events include the University Scholar Series, a set of lectures by SJSU professors on a variety of interesting and thought-provoking topics.



Tutorials available on the Library Channel are useful tools for anyone who is new to the library, needs assistance navigating the website or wants to sharpen his or her research skills. Created by university librarians,

online tutorials provide users with better strategies to search for books, journal articles and magazines in the library's online catalog and digital databases.

The Library Channel is updated regularly with new videotaped events and tutorials. Visit the library's website periodically to view what is new to the collection. If you have comments on the Library Channel or suggestions for new videos or tutorials, visit [library.sjsu.edu/contact-us](http://library.sjsu.edu/contact-us). ♦

# History, mystery, and intrigue:

## An evening with two renowned SJSU authors

**T**he fourth annual University Library Dean's List dinner was held on June 3, 2011, in appreciation of library donors and their generous support.

The event began with a champagne reception and welcome by Dr. Gerry Selter, SJSU provost and vice president of academic affairs; Anne Johnson, associate vice president of development; and Ruth Kifer, university library dean. A sunset dinner in the eighth-floor Grand Reading Room was accompanied by live music from harpist and SJSU alumna Ruthanne Adams. Dean Kifer awarded guests numerous prizes, courtesy of local businesses.

Talks by SJSU emeriti faculty Dr. Thomas Layton and Dr. Arlene N. Okerlund were highlights of the evening. Layton, professor emeritus of anthropology, shared details of his family's life during the Holocaust, other personal reminiscences of his family life, and his subsequent fascination with history and archaeology. He spoke about his book *The Voyage of the 'Frolic': New England Merchants and the Opium Trade* (1999), and shared many intriguing images from his travels. Okerlund, professor emerita of English, discussed her book *Elizabeth of York* (2009) and the significant role the library plays in serving her research needs.

### Historical subjects, modern research methods

Layton specializes in prehistoric and historical archaeology, and has excavated in Iran, Nevada and California. Trained at Harvard, he taught at four universities and served as director of the Nevada State Museum before coming to SJSU in 1978. He has written numerous books, including *Western*

*Pomo Prehistory* (1990) and *Gifts from the Celestial Kingdom: A Shipwrecked Cargo for Gold Rush California* (2002).

Layton quipped that he researches "old stuff," but is pleased that the library's research tools are not. In fact, he stated that the library has "revolutionized" his work. "In order to be a historian nowadays, you have to use digital materials, and our library has been on the forefront in purchasing them," he said.

Okerlund served as dean of the SJSU College of Humanities and the Arts from 1980–86 and academic vice president from 1986–93. After returning to teaching in 1994, she joined SJSU's Semester Abroad in England program, where she enjoyed teaching Shakespeare and English history. She continues to teach for the Osher Lifelong Learning Institute.

Okerlund specializes in Medieval and Renaissance studies. In addition to *Elizabeth of York*, she authored *Elizabeth Wydeville: The Slandered Queen* (2005), a biography of England's first Yorkist queen. Her research brings her to the university library to use resources such as the databases *English Historical Review Journal*, *Oxford English Dictionary Online* and *Oxford Dictionary of National Biography*, as well as the SJSU Special Collections and Archives.

### Join the 2012 Dean's List

If you would like to become a member of the 2012 University Library Dean's List and attend this year's event on Friday, June 22, contact Dean Kifer at 408-808-2419. The guest speaker will be Abraham Verghese, MD, the celebrated author of *Cutting for Stone*. ♦



**Top row, left to right:** Thomas Layton; Gene Goldberg, Mary Goldberg, Mary Lou Taylor and Jack Taylor.

**Bottom row, left to right:** Arlene Okerlund; Sidney Tiedt, Sheila McGann Tiedt, Patricia Nichols and Frank Nichols; Vic Corsiglia, Joan Corsiglia and Ruth Kifer.



# NEH challenge grant fourth-year deadline approaches

Thanks to the generous contributions of dedicated library supporters, more than \$375,000 has been raised for the library's National Endowment for the Humanities (NEH) challenge grant. These donations have secured a match exceeding \$125,000, bringing the endowment total to more than \$500,000. Now in the fourth year of the grant, the library seeks to raise an additional \$100,000 by July 31 to receive the next match from the NEH. During the fifth and final year of the grant, which begins August 1, 2012, and ends July 31, 2013, an additional \$200,000 must be raised locally.

The NEH grant has enabled the university library to establish a permanent endowment to support the licensing of humanities databases. Contributors to the grant share a belief in the importance of the humanities and the role they play in society. Humanities databases provide access to critical information that can improve communications among diverse groups, spark creativity and directly impact the quality of life in the global community.

Last year the library reported the first database acquired with NEH endowment funds: *Orlando: Women's Writing in the British Isles*. Recently two additional databases have been licensed due to the dedication of local donors to the



NATIONAL ENDOWMENT FOR THE  
**Humanities**

NEH grant: *The Johns Hopkins Guide to Literary Theory & Criticism* and the *Brill Dictionary of*

*Religion* (see page 4 for details). A special thank you is extended to Alexander Street Press for an in-kind gift of the database *Black Short Fiction and Folklore*.

If you have not made a contribution to the NEH grant this year, please consider doing so today. Your gift will make a difference in the lives of students, faculty and the greater community well into the future. Every contribution makes a difference, and its value increases because of the matching funds provided by the NEH. To learn more, contact SJSU Library Dean Ruth Kifer at 408-808-2419 or [ruth.kifer@sjsu.edu](mailto:ruth.kifer@sjsu.edu). ♦

## Library welcomes new director of development

**In October 2011, the university library welcomed a new director of development, Sabra Diridon.**

For the past ten years, Diridon has worked as a political fundraiser, most recently running her own successful consulting company. She has raised funds for candidates at every level of office—from city council to U.S. president—and continues to remain involved with various political and community organizations.

"Silicon Valley is a community that believes in higher education and philanthropy," says Diridon. "I'm proud to bring those values together to support the San José State University Library and SJSU students."



Diridon holds a BA in Mass Communications from UC Berkeley and an MPA from SJSU. Her credentials include serving as Northern California deputy fundraising director for Hilary Clinton for President, fundraising director for the Santa Clara County United Democratic Campaign, and senior field representative and fundraising director for state senator Joe Simitian.

Her most recent accomplishment was the birth of her twins, Rodney and Avery, this past December.

Diridon will be available in the spring of 2012 to talk with you about your giving plans. Until then, please contact SJSU Library Dean Ruth Kifer at 408-808-2419 or [ruth.kifer@sjsu.edu](mailto:ruth.kifer@sjsu.edu). ♦

## University's Acceleration campaign on track to reach \$200 million goal

**Acceleration: The Campaign for San José State University is moving forward at a strong pace as it enters 2012.**

The first comprehensive fundraising campaign in SJSU history has raised more than \$163 million in donations and commitments universitywide. That is close to 82 percent of the campaign's \$200 million goal.



A recent pair of gifts totaling \$25,000 has the university library off to a good start in raising funds in 2012. Donors are encouraged to support us in raising the remaining \$626,000 toward the library's \$2 million campaign goal. A donation to the library designated for the National Endowment for the Humanities (NEH) grant not only helps achieve the Acceleration campaign goal, it has the added benefit of being matched by the NEH, increasing the value of the gift and building the NEH library endowment.

To learn more about how you can contribute, contact SJSU Library Dean Ruth Kifer at 408-808-2419 or [ruth.kifer@sjsu.edu](mailto:ruth.kifer@sjsu.edu). ♦





SAN JOSÉ STATE  
UNIVERSITY

KING LIBRARY

One Washington Square  
San José, CA 95192-0028

RETURN SERVICE REQUESTED

NONPROFIT  
ORGANIZATION  
U.S. POSTAGE  
PAID  
SAN JOSÉ, CA  
PERMIT NO. 816



Library Science  
Collection Endowment



ABOVE: The bookplate created for the Library Science Collection Endowment.

## Make a difference

### Support a vital field of study with a library endowment

Endowments help fund library programs and collections that are vital to the university's educational mission. By providing funds for the library in perpetuity, endowments provide an annual income to enhance library services and resources in ways that go far beyond base budgets.

The Library Science Collection Endowment will enrich the library resources that support the SJSU School of Library and Information Science, the largest graduate program of its kind in the world. To achieve the status of a full endowment, an additional \$15,000 needs to be raised for this fund by November 2012. If you would like to contribute to this pre-endowment or to any of the library's other endowments, simply use the envelope enclosed in this newsletter and specify the endowment on your check.

To learn more about adding to or creating a library endowment, visit [library.sjsu.edu/giving-library/library-endowment](http://library.sjsu.edu/giving-library/library-endowment) or contact Dean Ruth Kifer at 408-808-2419 or [ruth.kifer@sjsu.edu](mailto:ruth.kifer@sjsu.edu). ♦