

Fall 9-26-1986

The Effect of Gamma Rays on Man-in-the-Moon Marigolds (1986)

San Jose State University, Theatre Arts

Follow this and additional works at: https://scholarworks.sjsu.edu/productions_1980s



Part of the [Theatre and Performance Studies Commons](#)

Recommended Citation

San Jose State University, Theatre Arts, "The Effect of Gamma Rays on Man-in-the-Moon Marigolds (1986)" (1986). *Productions 1980-1989*. 47.

https://scholarworks.sjsu.edu/productions_1980s/47

This Production is brought to you for free and open access by the Theatre Productions at SJSU ScholarWorks. It has been accepted for inclusion in Productions 1980-1989 by an authorized administrator of SJSU ScholarWorks. For more information, please contact scholarworks@sjsu.edu.

NEXT

In the University Theatre

Tennessee Williams' *The Night Of The Iguana*

October 17, 18, 22, 23, 24, 25, 8:00pm

Box Office opens October 6, M - F 1:00 - 5:00 Show nights 6:30 -8:00

University Theatre Technical Production Staff

Technical Director James R. Earle, Jr.
Shop Forman Steven Placke
Master Carpenter Gregory N. Little
Master Electrician Chris Thorne
Scene Shop Assistants James Cornwell, Russell M. Doolittle,
Janice Paxson
Costumer Eliza Chugg
Costume Shop Assistants Donna Federico, Rhonda Roper,
Maureen Smidebush
Costume Loan Coordinators ... Ann Rands, Colin MacDougall
Prop Room Coordinator Cathy Moser
Lighting Assistant Carol Faye Couch

University Theatre Front of House Staff

Director of Theatre Bob Jenkins
Publicist Vanita Moore
Box Office Manager Kathleen Eads
House Manager Darlene Conwell
Photographer Scott Baker
Publicity Crew Rob Langeder, Ann Rands, Drama 10 Students
Box Office Crew Kelsey Harding, Rob Langeder, Rosa Leon,
Jenny McAllister, Jerry McAllister, Colin MacDougall,
Michelle Robinson, Jon Selover

AMERICAN COLLEGE THEATER FESTIVAL XIX

Presented and Produced by the John F. Kennedy Center for the Performing Arts

Sponsored by the National Broadcasting Company

Supported in Part by Kennedy Center Corporate Fund,
U.S. Department of Education and Ryder System

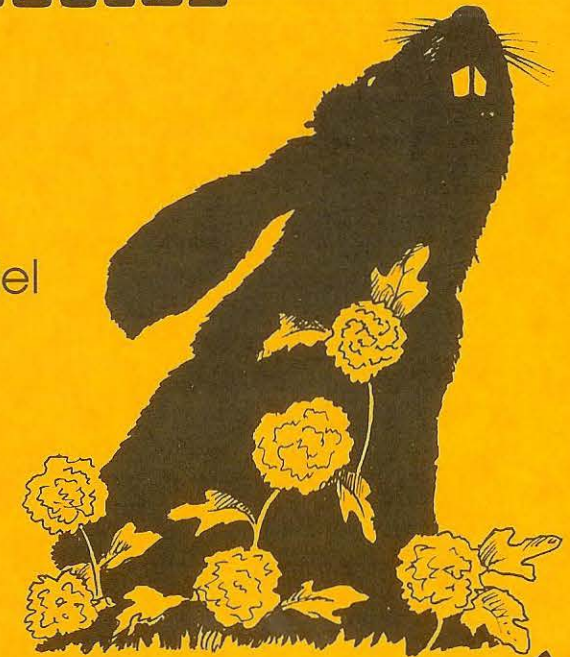
This production is an associate entry in the American College Theater Festival. The aims of this national theater education program are to identify and promote quality in college-level theater production. To this end, each production entered is eligible for adjudication by a regional ACTF representative, and certain students are selected to participate in ACTF programs involving awards, scholarships and special grants for actors, playwrights, designers and critics at both the regional and national levels.

Last year more than 580 productions and 13,000 students participated in the American College Theater Festival nationwide. By entering this production our department is sharing in the ACTF goals to help college theater grow and focus attention on the exemplary work being produced in college and university theaters across the nation.

SAN JOSE STATE UNIVERSITY
PRESENTS

THE EFFECT OF GAMMA RAYS ON MAN-IN-THE-MOON MARIGOLDS

Written by
Paul Zindel



September 26, 27
October 1, 2, 3, 4
University Theatre
8 p.m.

THE EFFECT OF GAMMA RAYS ON MAN-IN-THE-MOON MARIGOLDS

Directed by **Wendy McGlothlin**

Cast (In order of appearance)

Tillie
Nita Duarte

Beatrice
Cori White

Ruth
Lisa Zambetti

Nanny
Wanda Sobotka

Janice Vickery
Katie Amstutz

Peter Rabbit
Matilda Lapin

Scenic Design
Donamarie Reeds

Costume Design
Maureen Smidebush

Makeup Design
Sharon Ridge

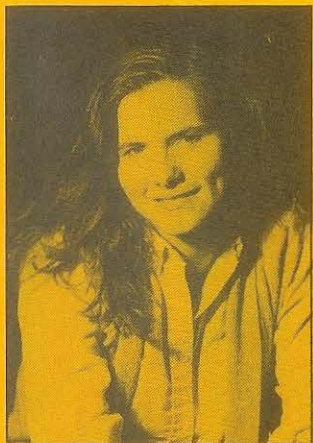
Design Staff

Lighting Design
Ken Dorst

Property Design
Carol Faye Couch

Sound Design
Jeanette M. Robertson

*Time: The past, the present and the future
There will be one 15 minute intermission*



From the Director's Pen . . .

Within each of us resides a hurt or angry child. That child needs love and attention. That child needs the opportunity to reach out to the parent to make an honest connection. Because of this I feel this play reaches out to all of us, the actors and the director as well as you the audience, and touches us deeply using tender but often painful realizations.

I want you to feel — empathy, maybe sympathy, and maybe even anger. We have discovered that there are a great many smiles to be had in this production as well as a tear or two!

*From the ashes of our lost hopes,
Rise the shoots of our new dreams.*

Wendy McGlothlin

Director

Wendy is an M.F.A. candidate completing her last year at SJSU. She is from Seattle, Washington, where she worked professionally as an actress and director. She directed *Three People* in the New City Theatre Directors Festival in Seattle and the following year acted in a Festival production of *Calm Down Mother*. Wendy received her B.A. in Drama from the University of Washington where she appeared in Caryl Churchill's *Vinegar Tom* and Jean Giradoux's *The Infernal Machine*. Since she arrived in California her work has been seen by SJSU audiences in *Dark of the Moon* as Ella Bergan, as the assistant director of *The Imaginary Invalid* and director of Susan Glaspell's *Trifles*. In the Experimental Theatre Workshop Wendy has worked on the development of new scripts as a director, writer and actress. Most recently she has worked throughout the Bay Area as an actress for the Bay Area Playwrights Festival, an instructor for the Children's Theatre Workshop Summer Conservatory and as a director for the Palo Alto Playwright's Forum.

GAMMA RAYS Production Staff

Stage Manager Susan R. Brooks
Technical Director Russell M. Doolittle
Assistant Stage Mangers Lisa J. Weber, Greg Watkins
Scenic Artists Vanessa Huddleston, Jerry La Piedra
Stage Crew **Carol Faye Couch**, Susan Gaeta,
Frank Machado
Lighting Crew **Tim O'Conner**, Kiira Jepson,
Janice Paxson
Assistant to the
Sound Designer Scott Santana
Sound Technician Kurt Meeker
Costume and Makeup
Design under the
supervision of Elizabeth M. Poindexter
Costume Construction Susan Carr, Donald Davis,
Debbie Eason, Mary Wong,
Drama 10 Students,
Drama 52 Students
Costume Crew **Teri Bawdon**, Gregory S. Rehrig,
Christina Thompson, Joellen Tuttle
Makeup Crew **Gregory S. Rehrig**, Penelope Issichopoulos

Bold denotes crewhead

Acknowledgements: Richard Stead Nanny's Wig
Cyrus Vance Music Composition
Special thanks to Matt Gorden & Chris Thorne

Produced by special arrangement with Dramatists Play Services, Inc.