

10-1-2008

## Spanish Environment Under Threat From New Road

Jo Farb Hernandez  
*San Jose State University*, [jo.hernandez@sjsu.edu](mailto:jo.hernandez@sjsu.edu)

Follow this and additional works at: [https://scholarworks.sjsu.edu/artdesign\\_pub](https://scholarworks.sjsu.edu/artdesign_pub)



Part of the [Art and Design Commons](#)

---

### Recommended Citation

Jo Farb Hernandez. "Spanish Environment Under Threat From New Road" *Raw Vision* (2008): 14.

This Article is brought to you for free and open access by SJSU ScholarWorks. It has been accepted for inclusion in Faculty Publications by an authorized administrator of SJSU ScholarWorks. For more information, please contact [scholarworks@sjsu.edu](mailto:scholarworks@sjsu.edu).

## SPANISH ENVIRONMENT UNDER THREAT FROM NEW ROAD

Jo Farb Hernandez reports:

One of Spain's most admired environments, 'Capricho de Cotrina' built by Francisco González Grajera (see RV#60) is under threat from a new road construction proposal. On the outskirts of the village of Los Santos de Maimona in the western province of Badajoz, the site is adjacent to a major north/south thoroughfare, and thus attracts a fairly significant number of visitors who are drawn off the road by the organic crenellation of two towers, sheathed in bright tiles affixed in a random but formally balanced exemplar of *trencadis* composition. Fronted by a wavy fence of vertical finials thrusting upward into the Extremaduran sun, the towers and accompanying domes melt down into asymmetrical cylindrical shapes, pierced with an assortment of abstractly-shaped windows and limned by a curvilinear exterior staircase that provides fine views of the complexity and meticulous craftsmanship of González Grajera's artistry.

However, recent media attention to his creation has provoked a battle between the artist and the municipal offices that will determine whether or not the artist is able to complete his construction as he has envisioned. *Raw Vision* readers are urged to write letters of strong protest to the local authorities to urge them to let the artist complete his work without threat. Only a united campaign which points out the reduction in tourist visitation to the village with its consequent loss of income, the hardship on the artist by preventing his concepts from becoming fully realised, and, finally, the irreparable damage to the study of the entire genre of art environments worldwide may prevent the city from carrying out its plans.

RV readers are urged to write letters to the mayor:

Alcalde José Santiago Lavada, Los Santos de Maimona, Badajoz, 06230 ESPANA.

Copies may be sent to Marla Esperanza Díaz García, Directora General de Patrimonio Cultural, Junta de Extremadura, Calle Almendralejo 14, 06800 Mérida, ESPANA. Letters of protest may also be sent directly to SPACES for forwarding to the correct authorities. Please also send a copy of your letter to SPACES.

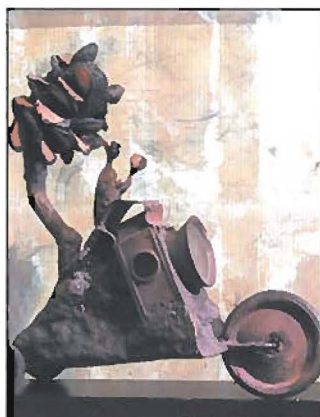
SPACES 9053 Soquel Drive, Suite 205, Aptos, CA 95003.



photo: J. F. Hernandez

## AMERICAN PRIMITIVE

September 18–November 26  
American Primitive Gallery  
presents *Visual Steampunk*, with works inspired by early technology and science fiction, and the writings of Jules Verne, H.G. Wells, and the visionary tales of Buck Rogers. Artists include Ilm Bauer, L-15, Gerard Cambon, James Wong, Stephen Geck Gessig, and Charles A.A. Dellschau. 594 Broadway, #205, New York, NY 10012. t: 212 966 1530.  
[www.americanprimitive.com](http://www.americanprimitive.com)



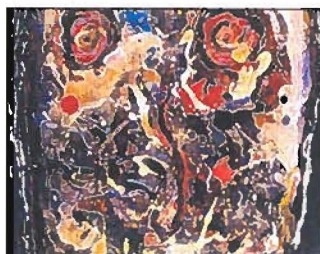
Gerard Cambon

## JUDY SASLOW

September 5–October 4  
*Michel Nedjar & Edmond Engel: New Works* features new works from these Art Brut masters at Judy A Saslow Gallery,  
300 W. Superior #103, Chicago, IL 60610. t: 312 943 0530.  
[www.jsaslowgallery.com](http://www.jsaslowgallery.com)



Michel Nedjar



Edmond Engel

## BERENBERG

September 10–November 1  
Houses and trees on the crowded streets of Toronto feature in *Jennifer Harrison: New Paintings* on view at Berenberg Gallery,  
4 Clarendon Street, Boston, MA 02116.  
t: 617 536 0800.  
[www.berenberggallery.com](http://www.berenberggallery.com)



Jennifer Harrison

## CHRIS MARS

September 13–October 4  
In conjunction with his 160 page 'green' monograph with paintings and essays by Chris Mars, the exhibition *Tolerance* can be seen at Billy Shire Fine Arts, 5790 Washington Blvd. Culver City, CA 90232. t: 323 297 0600.  
[www.billyshirefinearts.com](http://www.billyshirefinearts.com)



Chris Mars