

Yell Leader Election Is Tomorrow

Times Sponsors Monro's Hollywood Marionettes

**S. J. Times to Present
Monro Marionettes
Thursday, Oct. 27**

TWO PERFORMANCES ARE
TO BE PRESENTED
THURSDAY

Show Is In Auditorium

FOUR FEET CARRICATURES
OF MOVIE STARS TO
BE FEATURED

The San Jose State College Times is sponsoring Monro's Hollywood String Marionettes direct from the Hollywood Puppet Theatre of Sunset Hollywood in the Morris Dailey auditorium Thursday afternoon at 2:15, and evening at 7:30.

Aid Fund
The show is being sponsored to insure the continuance of the issuance of the Times four times a week and money obtained from the production will be used for this purpose.

Enroute to the East
The company is enroute east in response to numerous calls from larger cities. The marionettes will (Continued on Page Three)

**Faculty Committee
Meets To Decide on
Final Stadium Plans**

A committee consisting of Coach MacDonald, Coach De Groot, Dr. Peterson, Mr. Minssen, and Dr. MacQuarrie, met in the president's office last Thursday morning for the purpose of putting the finishing touches on the plans for the new stadium, and to discuss how far the work could progress on the present funds available.

The stadium, which Michael Antonacci, city engineer and co-planner of the Stanford stadium, is to draw plans for, will be situated on an eight-acre lot just south of the Spartan field. The stadium will be the double crescent type, similar to Pacific's, and have the greatest seating capacity at the fifty-yard line. There will be no inside running track so the seats will be within 30 feet of the actual field. The field will be sunk 30 feet and the stadium proper dirt banked.

(Continued on Page Three)

A meeting of the Japanese Club will be held today at 12:30 in Room 3 of the Home-Making building. Each member is requested by President John Kitazako to be present and bring his lunch, so that the meeting may begin on time.

'ANNA CHRISTIE' WILL BE STAGED BY SPEECH MAJORS

VIOLA GILLIS HEADS CAST IN ROLE OF ANNA CHRISTOFENSEN

With a cast comprised largely of ex-members of the San Jose Players, "Anna Christie" is to be presented by the San Jose State College.

This will be the first play presented by the student body under the direction of the Speech Arts department under the new system of play production since the disbandment of Players.

Viola Gillis, who will be remembered for her characterizations in "Lady Winderemere's Fan", "House Party", "Cradle Song" and "Silver Cord," will appear in the role of Anna.

Margery Collis, who has appeared in the role of scene designer for Players' productions, will be seen in the role of Marthy.

Others who have leading roles in the play are: Dick Glycer, Barney Pritchard, Carl Palmer, Howard Nelson, Irving Minehan, and Robert Therkell.

Tickets for the production are now on sale in the quad.

LOST

Please return woman's black purse belonging to Mrs. Arthur Atwood, which was taken by mistake at the student body dance last Friday evening, to the Controller's office.

Betty Wolfe Receives Appointment to Office

Miss Betty Wolfe has just received appointment as chairman of student body programs from Leon Warmke.

Her duties consist of finding and arranging for suitable programs to be given at all student body general assemblies. Miss Wolfe has had considerable experience in this type of work from high school, and although it is unusual for a first quarter freshman to be given this office, Mr. Warmke feels she will be able to fulfill its demands.

Miss Wolfe has already started laying plans for this coming quarter, including mainly off-campus performers and speakers, such as: ventriloquists, tumblers, prominent statesmen, Ormand McGill, and a great variety of other interesting performers.

Miss Wolfe expresses her desire to fill the position to the best of her capabilities and desires the assistance and co-operation of those in the student body whom she may ask for help.

Identification Is Now Requirement

Beginning this week a student identification card must be shown with the Associated Student Body card for admittance to any athletic contest or dance put on by the college.

At the game last Friday, the Board of Athletic Control found it necessary to revoke the student body privileges of several individuals because they misused their privileges by loaning their cards to their friends.

Incidentally these members of the student body were breaking a State law when they surrendered their cards with a membership in the Edwin Markham Health Cottage, which is on the back of the Student Body Cards, as this membership is non-transferable except by a vote of the board of executives.

N. O. THOMAS,
Controller.

State Holds Conference Lead as Locals Tie Fresno State

Coach Dud DeGroot's Smashing Spartans and Coach Stan Borleske's Beefy Bulldogs from Fresno State played sixty minutes of some of the best defensive football seen in these parts for some time at Spartan field Friday afternoon, and the result was just what one would expect it to be after sixty minutes of defensive football, 0-0.

San Jose threatened twice, coming within striking distance of the Fresno goal in the first and third quarters. The Bulldogs passed the Spartan's 20-yard line but once, and that early in the first period. The rest of the contest resolved itself into a punting duel between Jack Wool and Mathieson, lanky Fresno kicker, with the Spartan having the advantage, averaging 42 yards per boot to the Fresno's 37.

Fresno was first to menace the San Jose goal line. Early in the first quarter Wool fumbled and Spivey recovered on the Spartan 19-yard line. In seven plays, Horner, Payne and Mathieson plugged ball to the 5-yard line. Payne passed on fourth down and Buchler, San Jose tackle, knocked the toss down to end the threat.

The Spartans likewise made use of the fumble route to knock at Fresno's door a few minutes later. Payne muffed Wool's punt and Mel Hornbeck recovered on the 19-yard line. Two plays later two

(Continued on Page Four)

COVELLO ASKS STUDENT AID IN COMMUNITY CHEST CAMPAIGN

TAU DELTA PHI TO GO WITHOUT LUNCH ON FRIDAY NOON

This week is all important in the Community Chest Campaign. We must start handing in our contributions immediately if we are to reach our quota.

Two organizations, Allenians and Delta Nu Theta, have already subscribed 100%. The Japanese Club is well beyond the 50% mark. We need more interest of this sort.

This is what Tau Delta Phi, the men's honor fraternity on the campus is doing: On Friday ALL the members of Tau Delta Phi are meeting in the tower for lunch.

The lunch will consist of plain water and stale bread, and each member will pay a minimum of 25 cents for these rations. This will absolutely compromise their whole noonday lunch. All the proceeds will be turned over to the Community Chest as the fraternity's contribution.

We need more action of this sort.

Sincerely,
F. COVELLO.

LOST

Black Shaeffer fountain pen, bearing the name of Grace Strobel. Will the finder please return to the Lost and Found department. Reward, \$3.00.

Appointments for La Torre Pictures Made

The La Torre staff will hold office hours this week from ten until three. All students who are to have pictures in this year's La Torre are urged to come in as early as possible and make their appointment for having their picture taken. All clubs or societies must get their appointment this week also. If any organization on the campus is to have a group picture their appointment must be O. K.'d this week. Those wishing to make an appointment should see either Ruth Montgomery or Kay Lindsay.

Tomorrow evening is to be State College night at the Fox Mission Theatre when the State College football team and band will be the guests of honor at the showing of the picture, "All American."

The picture stars all-American football men, and is a follow-up on the "Spirit of Notre Dame."

The band is to play in front of the theatre at seven-thirty, and will then go in to see the picture.

Hamilton, Spencer, Burns, and Palmer Vie for Positions

DARIO SIMONI APPOINTED JUDGE FOR STUDENT BODY ELECTIONS

Competition To Be Close

POSITION CARRIES PLACE ON STUDENT BODY EXECUTIVE BOARD

Election booths will be open between eight and five tomorrow for the election of the varsity yell leader.

Students whose names will be on the ballot and who are eligible for the position are Charles Spencer, Howard Burns, Jim Hamilton, and Carl Palmer.

From this list the individual receiving the largest number of votes will be varsity yell leader and the next two highest will be his assistants.

The position of varsity yell leader carries with it a position on the executive board of the college and is one of the most important in the student body as it is a year's position.

Dario Simoni, newly appointed election judge, will be in charge of the first student body election of the new quarter.

Social Science Majors Arrange for Lecture on New Amendments

Under the auspices of the Social Science department there will be held a series of discussions of the 20 amendments before the voters of California at the coming election of November the 8th. All faculty and student voters are cordially invited to attend.

Meetings will be held in room 17 of the Home-Making building on Friday, October 28; Monday October 31; and, if necessary, Tuesday, November 1st. Discussions will begin promptly at 12:30. You may bring your lunch if you so desire. The following program will be given, although the exact order will depend upon the time of the speakers:

No. 9 will be discussed by Dr. Staffelbach.

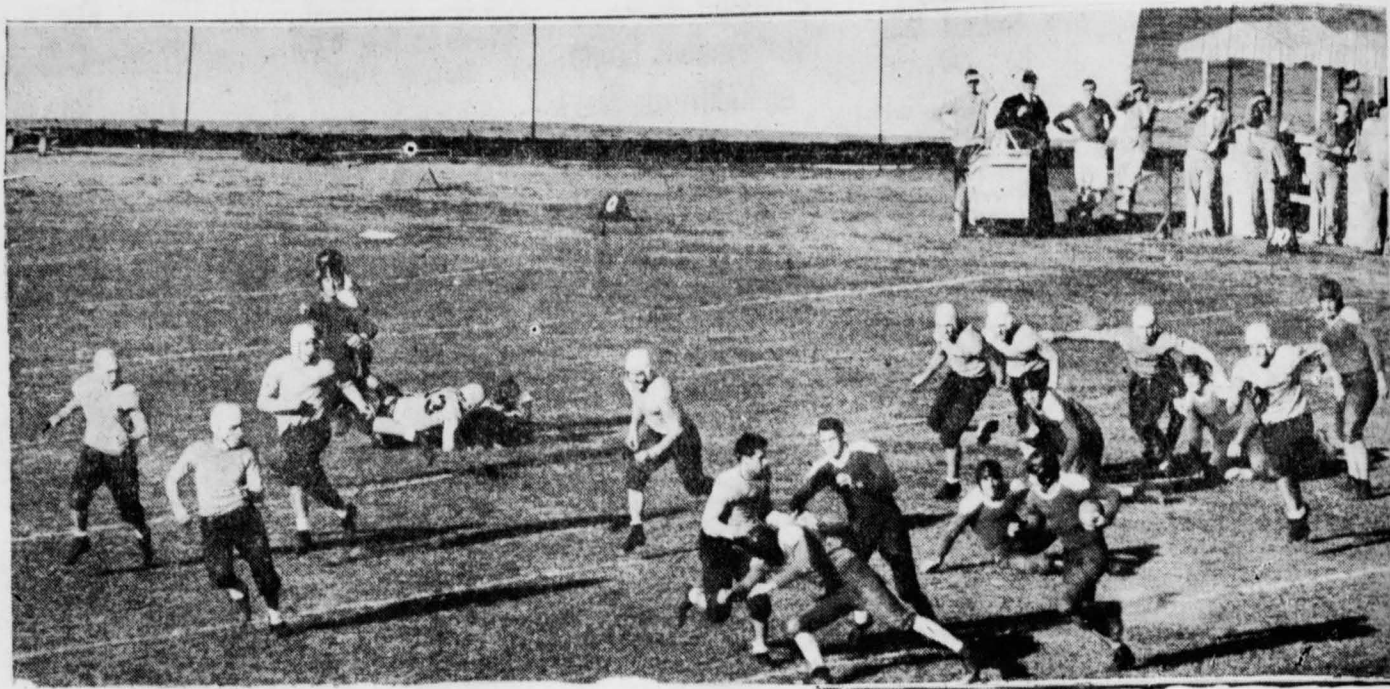
No. 8, 17, 20, by Dr. Campbell. No. 3, 7, 10, 15, by Senator Jones.

No. 1 and 2 by (perhaps) Assemblyman T. M. Wright.

NOTICE

Last week a new leather jacket, a Russian calfskin wallet, and a pair of driving glasses were taken from Kay Lindsay's roadster while parked in the circle. Reward for any information.

When the Vaunted Fresno Offensive was Stopped Cold on the 25-yard Marker



The above cut shows Payne, Fresno back, about to be spilled for a 5-yard loss. Baracchi, Spartan's stellar end, can be seen smashing the interference, while Whitaker, Riley, Dieu, and Simoni are coming in to make the tackle. It is noteworthy that 9 Spartan players are on their feet, which was about the average for the afternoon.

State Holds Fresno Bulldogs To Scoreless Tie

Harrison Larry Winner in First Football Score Guessing Contest Sponsored by Local Merchant

If Leon Jacobs, local clothier, had not once been an ardent student of mathematics, the task of finding the winner of last week's "Football Dope Contest" would have been far too difficult to perform.

Of seventy-nine dopesters, not one guessed the score of the Fresno State-San Jose game correctly, the closest being a 6 to 0 score in favor of Fresno.

The contest finally boiled down to three men, Larry, Naas, and Bishop, and Larry was named the winner, as every team he picked won, except Fresno over San Jose.

The winner's score sheet: San Jose State 0; Fresno State 6. Stanford 7; U. S. C. 13. California 7; Univ. of Wash. 0. Wash. State 7; Oregon State 0. Notre Dame 35; Carnegie Tech 0.

SAN JOSE		COMPLETE STATISTICS		FRESNO
7	Total Firsts Downs from Scrimmage	2		2
5	Downs from running plays	2		2
1	Downs from passes	0		0
118	Total yards gained from scrimmage (Runs and passes)	68		68
98	Yards from running plays	58		58
20	Yards from forward passes	10		10
27	Yards lost from scrimmage	39		39
69	Total number of plays from scrimmage	69		69
44	Number of running plays	44		44
7	Forward passes attempted	12		12
4	Forward passes completed	1		1
1	Forward passes incomplete	10		10
2	Forward passes intercepted by opponents	1		1
18	Number of punts	17		17
42	Average length of punts	37		37
1	Number of kick-offs	1		1
50	Average length kick-offs	25		25
8	Yardage kick-offs returned	41		41
3	Fumbles	2		2
2	Fumbles recovered	3		3
5	Penalties	8		8
45	Yards lost on penalties	60		60

SAN JOSE		BACKFIELD DOPE			
Pos.	Player	Times Carried	Yards Gained	Yards Lost	Average
F	Wool, Jack	19	30	3	1.4
H	Arjo, Ray	8	11	1	1.2
H	Bennett, Freddie	3	12	14	-6
H	Filice, Sammy	0	0	0	0.0
H	Wolfe, Delos	7	25	7	2.5
H	Dieu, Joe	11	20	0	1.8
Q	Riley	1	1	0	1.0

Frosh Trounced by Fresno, 20-6, When Defense Blows Up

The undefeated, untied, unscored upon record of the Spartan Babes went glimmering Saturday night at Fresno when the Bulldog Pups smothered the local Frosh, 20-6. Coach Blesh's team were completely haywire, poor tackling really costing San Jose the victory.

The evening started auspiciously for the Spartans when a trick reverse from Watson to Don Bernardo on the kick-off took the ball from the San Jose 15-yard line to the Fresno 20-yard stripe. Here the San Jose offense bogged down and Fresno kicked out of danger. With about four minutes to play in the first quarter, Watson took a Pup punt on the Spartan 42-yard marker and galloped 54 yards before being stopped on the Fresno four-yard line. Blesh sent in Bowser at quarter and Gregory at full with instructions for the scoring play. Gregory fumbled on the first play, but recovered. On the next play, Watson took the ball on a double reverse and scored unmolested. A bad pass from center spoiled the conversion.

Coach Leo Harris of Fresno, line-up, sent in a so-called second string, which immediately proceeded to romp away with the game. Fresno scored in the second, the third, and the fourth quarters, the Spartans seemingly unable to stop any of the Bulldog plays with clean tackles. Their defense blew up and Fresno had little trouble in scoring their 20 points.

Watson and Kellogg were the only two men on the San Jose squad who showed any tackling ability whatsoever. Watson also

San Jose Unable to Score from 3-Yard Line; Simoni, Hubbard, Whitaker, and Baracchi Star

(Continued from Page One)

apparently went astray with the injury to George Embury's knee two days before the game. The ironclad defense, based on an experienced line and a "pass conscious" backfield, which acquitted itself so nobly against Pacific, came through, however, to save San Jose from defeat in spite of the absence of the well-known "scoring punch."

Dario "Si" Simoni, Spartan tackle, was the outstanding man in an outstanding line. He conducted himself throughout the afternoon in a manner that was, to say the least, extremely oblivious to the gentlemen from Fresno.

Fresno's line likewise was impregnable, turning back thrust after thrust on the part of Spartan backs.

The Line-Up
SAN JOSE
Hubbard (c) REL
Francis
Laughlin
Simoni RTL
Hardiman
Hornbeck RGL
Wilson
Kazarian
Whitaker C
Sandholt LGR
Carmichael
Klemm
Buehler LTR
Collins
Baracchi LER
Laughlin
Griffith Q
Riley
Moore Arjo RHL
Dieu
Bennett LHR
Filice
Wolfe
Wool F

got off a kick from his own 40-yard line which rolled out of bounds on the two-yard stripe. Lamphear, sub guard, suffered an injured elbow and may be out for the remainder of the season. Phipers and Glover, ends, were both slightly injured, the former sustaining an arm injury and the latter hurting his hip.

The Frosh have no definite opponents for next Saturday as yet, but it is possible that a game may be lined up with Hollister High. There will be no Frosh practice until Wednesday.

FRESNO
Wickstrom
Baker
Kaufman
Kness
Feichtmeit
Metzler
Niswander
White
Shimmitt
Pharis
Lewis
Kness
Spiver
Glenn (c)
MacQuiddy
Payne
Ramble
Mathieson
Horn
Besse