

1-26-2019

## Modernized Collaborations: Technologies Affecting Librarian Research Connections

Ngoc-Yen Tran  
*San Jose State University*, [yentran@seattleu.edu](mailto:yentran@seattleu.edu)

Emily K. Chan  
*San Jose State University*, [emily.chan@sjsu.edu](mailto:emily.chan@sjsu.edu)

Follow this and additional works at: [https://scholarworks.sjsu.edu/lib\\_pub](https://scholarworks.sjsu.edu/lib_pub)



Part of the [Scholarly Communication Commons](#)

---

### Recommended Citation

Ngoc-Yen Tran and Emily K. Chan. "Modernized Collaborations: Technologies Affecting Librarian Research Connections" *ALA Midwinter Conference, Seattle, WA* (2019).

This Presentation is brought to you for free and open access by the Library at SJSU ScholarWorks. It has been accepted for inclusion in Faculty and Staff Publications by an authorized administrator of SJSU ScholarWorks. For more information, please contact [scholarworks@sjsu.edu](mailto:scholarworks@sjsu.edu).



# **Modernized Collaborations: Technologies Affecting Librarian Research Connections**

Ngoc-Yen Tran & Emily K. Chan  
San José State University

January 26, 2018  
Symposium on the Future of Libraries  
ALA Midwinter

# Who are we?



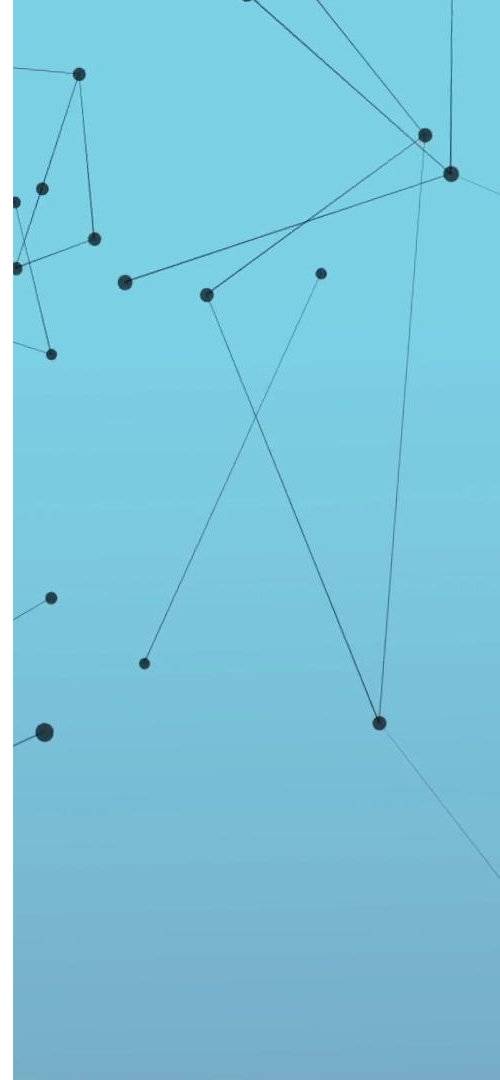
**Ngoc-Yen Tran**

Research Impact Librarian  
San José State University



**Emily K. Chan**

Interim Associate Dean  
for Research and Scholarship  
San José State University





# Agenda

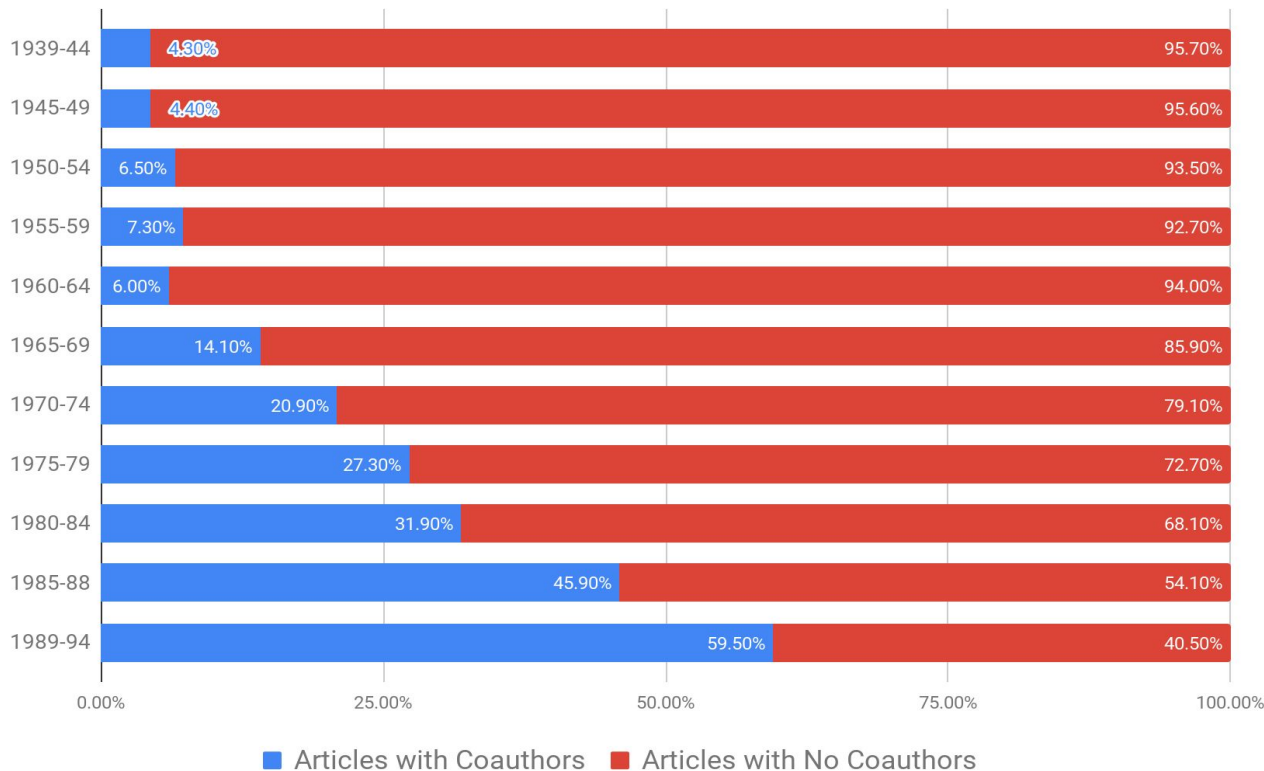
- Research collaborations in LIS
- Research findings
  - Monograph publishing
  - Library & Information Science Source database
  - Collaboration survey data
- Implications of research

A network diagram with black nodes and thin grey lines connecting them, set against a light blue background. The nodes are scattered across the frame, with some clusters and many long, thin connections.

**All disciplines have seen  
increases in collaboration**

# Authorship in College & Research Libraries

C&RL Article Authorship



**Aggregate data from:**

**Gloria S. Cline (1982)**

*College & Research Libraries: Its First Forty Years*  
*College & Research Libraries*

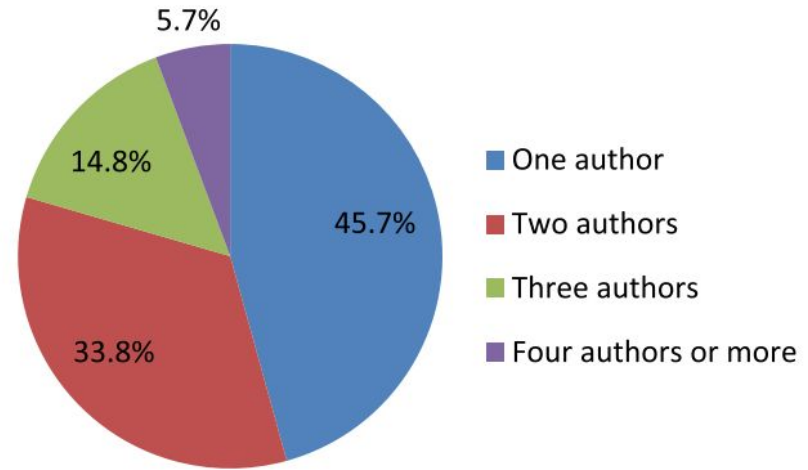
**James L Terry (1996)**

*Authorship in College & Research Libraries Revisited: Gender, Institutional Affiliation, Collaboration*  
*College & Research Libraries*



COLLEGE &  
RESEARCH  
LIBRARIES

# Authorship in *The Journal of Academic Librarianship*



**Fig. 1.** Number of authors for the articles.

**Lili Luo and Margaret McKinney (2015)**  
JAL in the Past Decade: A Comprehensive Analysis of  
Academic Library Research  
*Journal of Academic Librarianship*

Examples of journals included in study:

- Medical Reference Services Quarterly
- Journal of Interlibrary Loan
- Document Delivery & Electronic Reserve (formerly Journal of Interlibrary Loan, Document Delivery & Information Supply)
- Collection Building
- College & Undergraduate Libraries
- Internet Reference Services Quarterly
- New Library World
- portal: Libraries and the Academy
- Reference Librarian
- Serials Review

	<b>2003–2012 (Ten Years)</b>	<b>2003–2007 (Five Years)</b>	<b>2008–2012 (Five Years)</b>
Journals studied	41	41	39
Issues in journals studied	1,698	855	843
Number of refereed articles	10,575	5,038	5,537
Number of coauthored USAL articles	1,997	971	1,026
Percentage of USAL articles that were coauthored	51.04%	48.62%	53.55%

**Deborah D. Blecic, Stephen E. Wiberley Jr., Sandra L. De Groote, John Cullars, Mary Shultz, and Vivian Chan (2017)**

Publication Patterns of U.S. Academic Librarians and Libraries from 2003-2012  
*College & Research Libraries*



Journals included in this study:

- College & Research Libraries
- Information Technology and Libraries
- Journal of Academic Librarianship
- Journal of Education for Library & Information
- Science
- Journal of Library Administration
- Journal of American Society for Information
- Science
- Libraries and Culture
- Library and Information Science Research
- Library Quarterly
- Library Resources & Technical Services
- Library Trends
- Public Library Quarterly
- RQ
- School Library Media Quarterly
- Serials Librarian
- Special Libraries

**TABLE 1**  
DISTRIBUTION OF ARTICLES  
BY NUMBER OF AUTHORS

Authors	No.	Articles %
No author indicated	198	11.48
Single author	1,045	60.58
Two authors	375	21.74
Three authors	78	4.52
Four authors	23	1.33
Five authors	6	.35
Total	1,725	100.00

**Lois Buttlar (1991)**

Analyzing the Library Periodical  
Literature: Content and Authorship  
*College & Research Libraries*

**Table 1: Distribution of Number of Authors**

Number of Authors	Number of Articles	Percentage
Single author	127	47.21
Two authors	95	35.32
Three authors	38	14.13
More than three	9	3.35
<b>Total</b>	<b>269</b>	<b>100.00</b>

**Paramjeet Kaur Walia &  
Manpreet Kaur (2012)**

Authorship Pattern in Library and  
Information Science Journal  
Literature  
*Information Studies*

### **US Journals**

- Library Resources and Technical Services (LRTS)
- Library Trends (LT)
- The Library Quarterly (LQ)

### **UK Journals**

- Journal of Documentation (JOD)
- Journal of Librarianship and Information Science (JOLIS)
- Library and Information Science Research (LISR)

### **India Journals**

- Information Studies (IS)
- SRELS journal of Information Management (SJOIM)
- Annals of Library and Information Studies (ALIS)

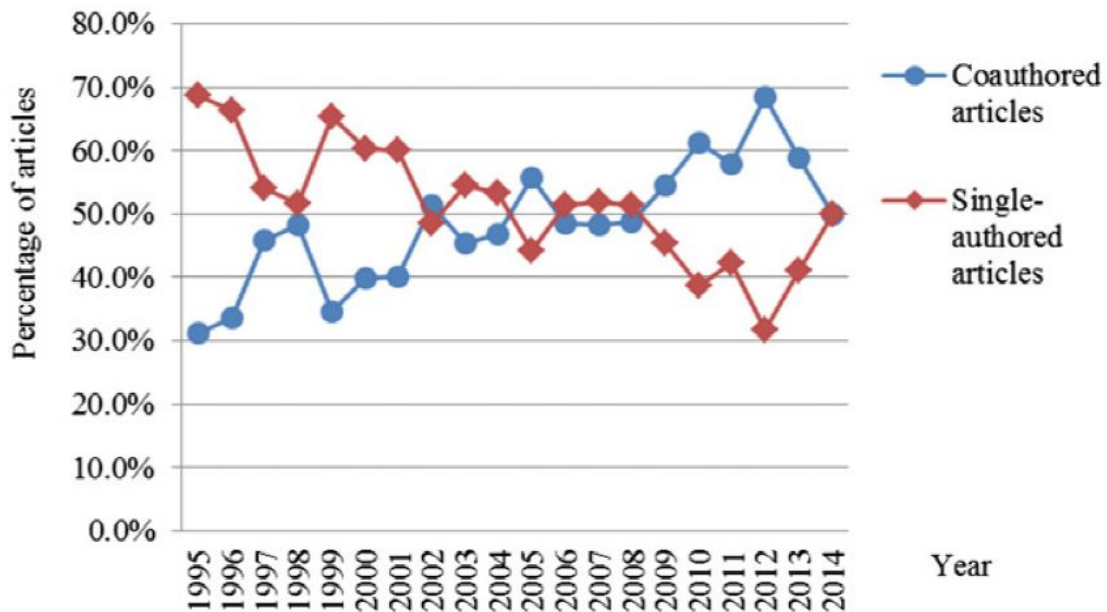
## Yu-Wei Chang (2016)

Characteristics of Articles  
Coauthored by Researchers  
and Practitioners in Library  
and Information Science  
Journals

*Journal of Academic  
Librarianship*

Journals included in study:

- College & Research Libraries
- Information Technology and Libraries
- Library and Information Science Research
- Library Quarterly
- Library Resources and Technical Services
- Library Trends



**Fig. 1.** Changes in annual percentages of single-authored and coauthored articles.

# Authorship in Monograph Publishing



Shameless plug (sorry!): Join me and fellow researcher, Erin Nevius, at ACRL 2019 for our contributed paper presentation on gender in LIS monograph publishing.

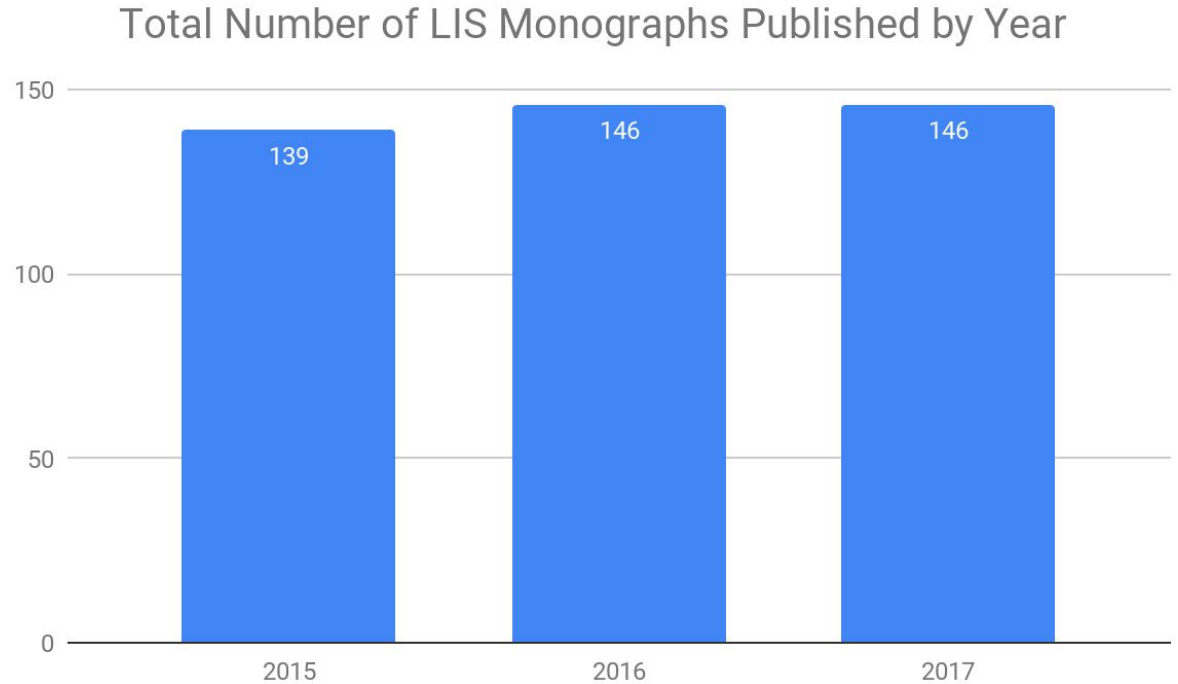
# LIS Monograph Publishing Study

## Publishers in study:

- ALA Editions
- ACRL
- Chandos
- Facet
- Library Juice
- Libraries Unlimited
- McFarland
- Rowman & Littlefield

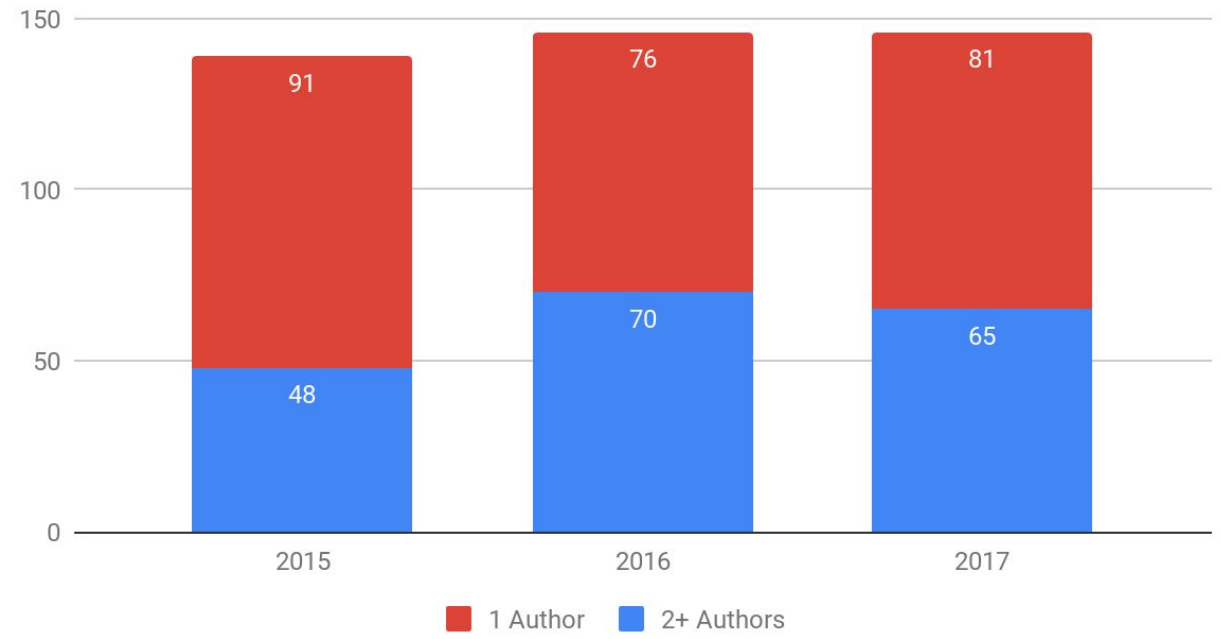
## Years included in study:

- 2015
- 2016
- 2017



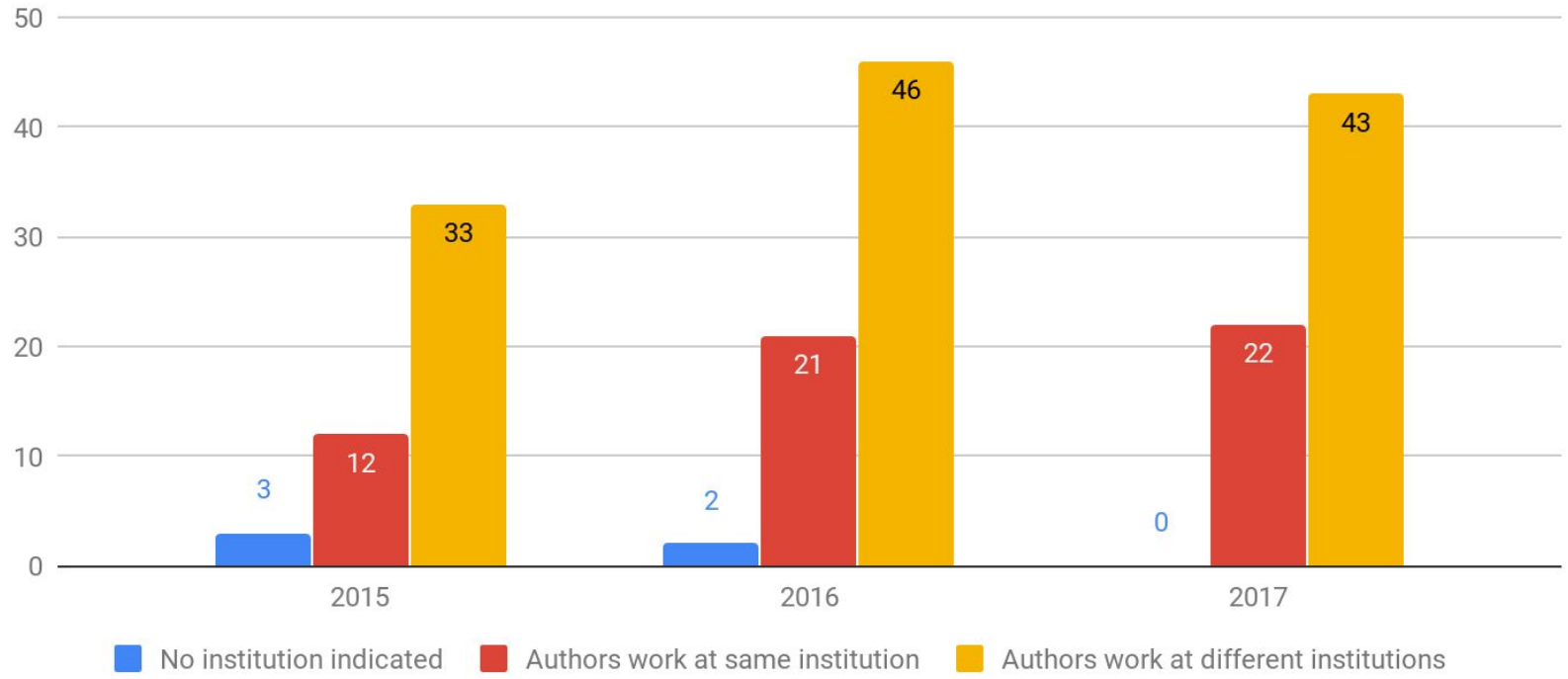
# Authorship in LIS Monograph Publishing

Monograph Authorship by Number of Authors by Year



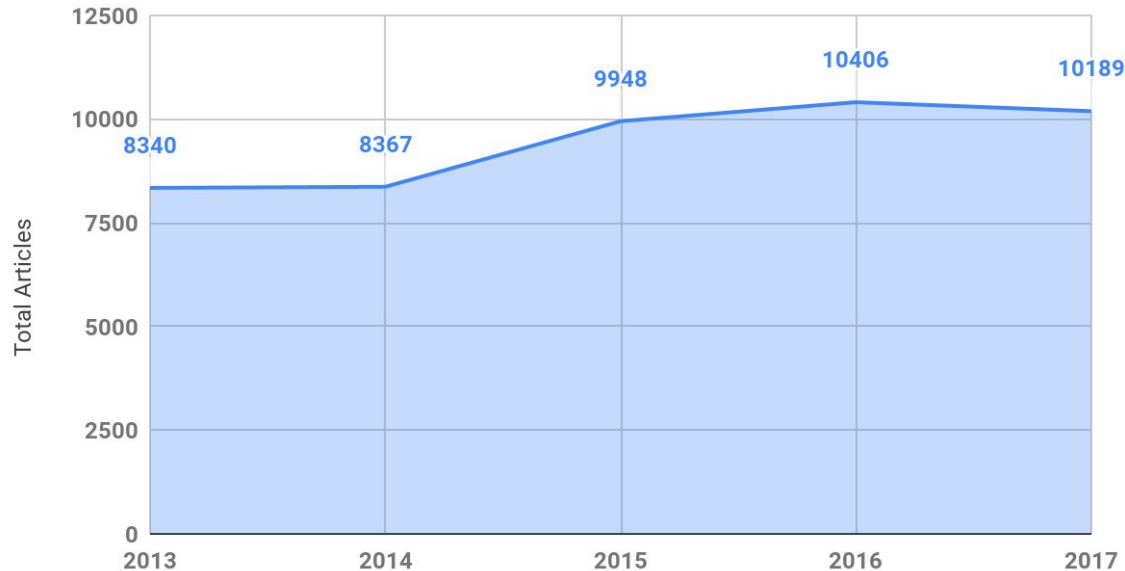
# Author Affiliations in LIS Monograph Publishing

Author Affiliation in Monograph Publishing by Year



# Library and Information Science Source (LISS) Study

Total Number of Articles by Year



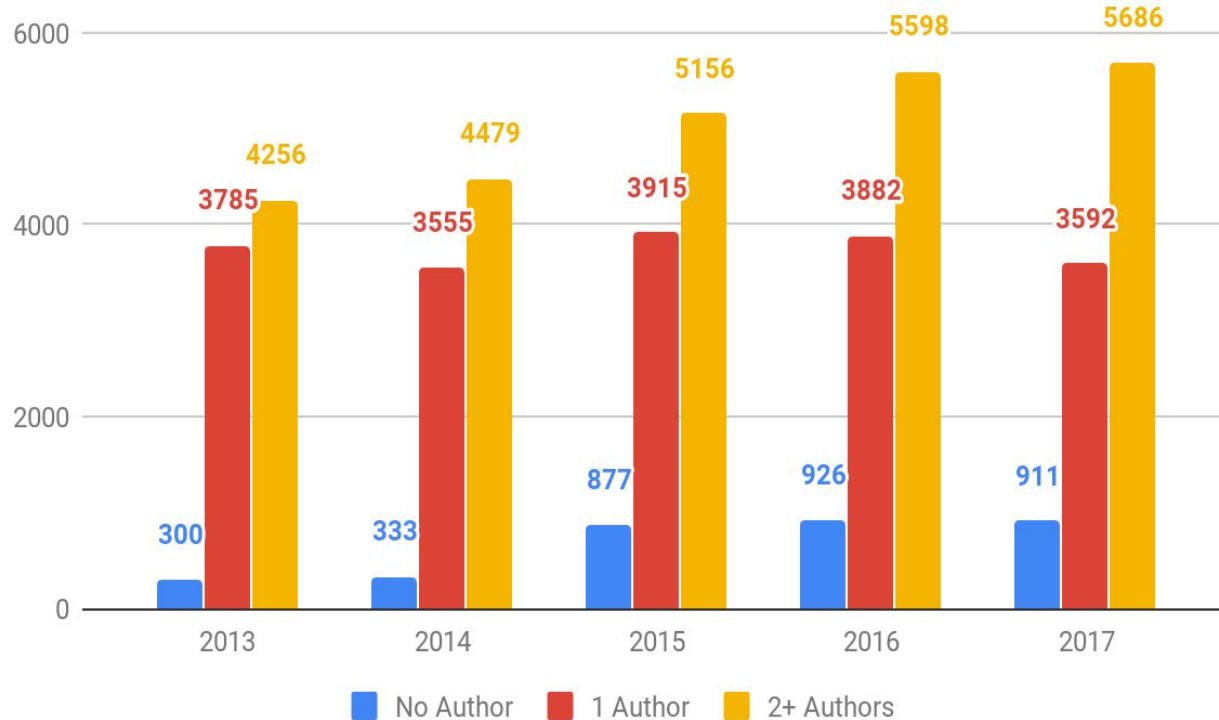
Article count in LISS for  
years 2013-2017

All Years:  
47,250 Articles



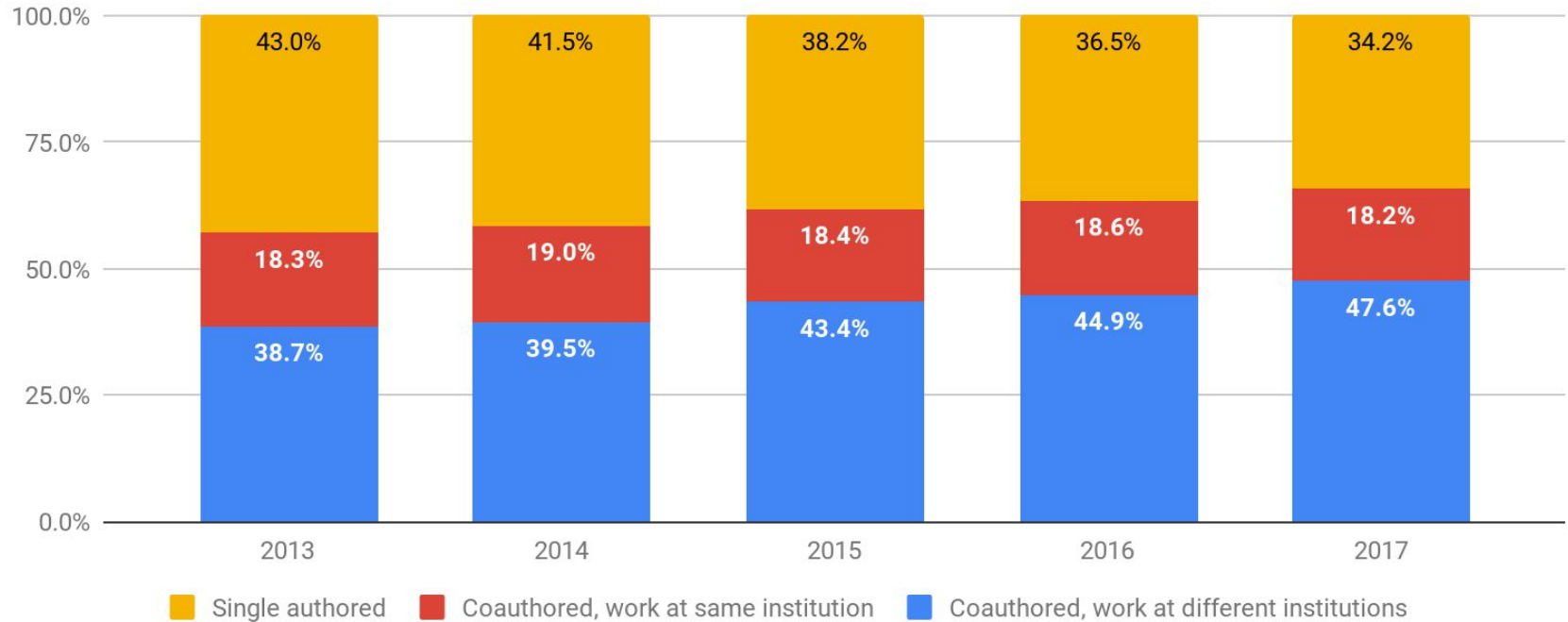
# LISS Single and Co-Authored Articles

Articles Indexed in LISS by Number of Authors



# LISS Collaboration in the Literature

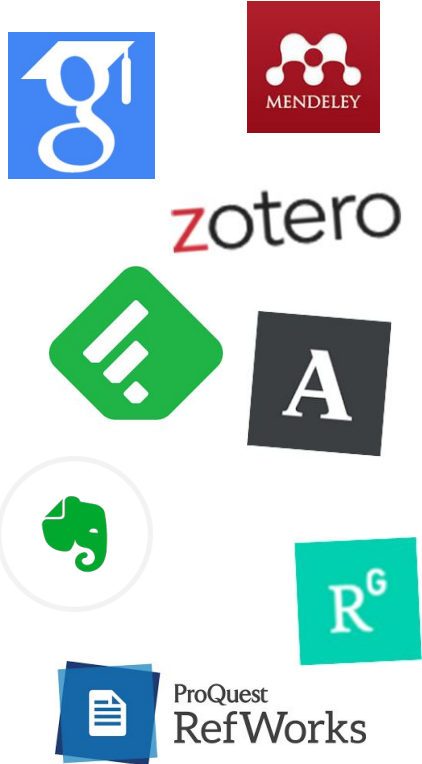
Percentage of Articles in LISS by Author and Affiliation Counts



The image features a light blue background with a network diagram. The diagram consists of numerous small black dots (nodes) connected by thin, dark grey lines (edges). The nodes are scattered across the frame, with some forming small clusters and others being isolated. The lines vary in length and orientation, creating a complex web of connections. The overall aesthetic is clean and modern, typical of a professional presentation or report.

# Tell Us About Your Collaborations

## Capturing, Organizing & Storing Information



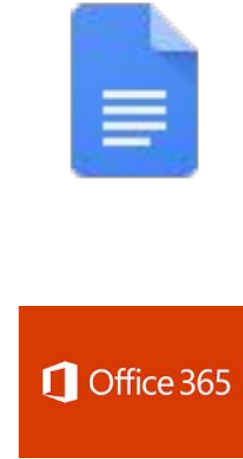
## Collecting Data



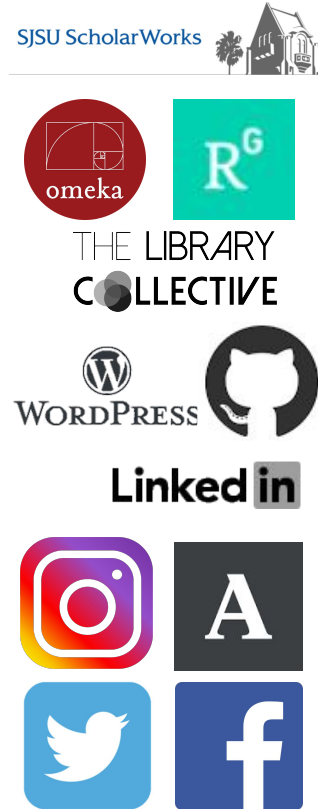
## Communicating




## Writing



## Sharing & Distributing



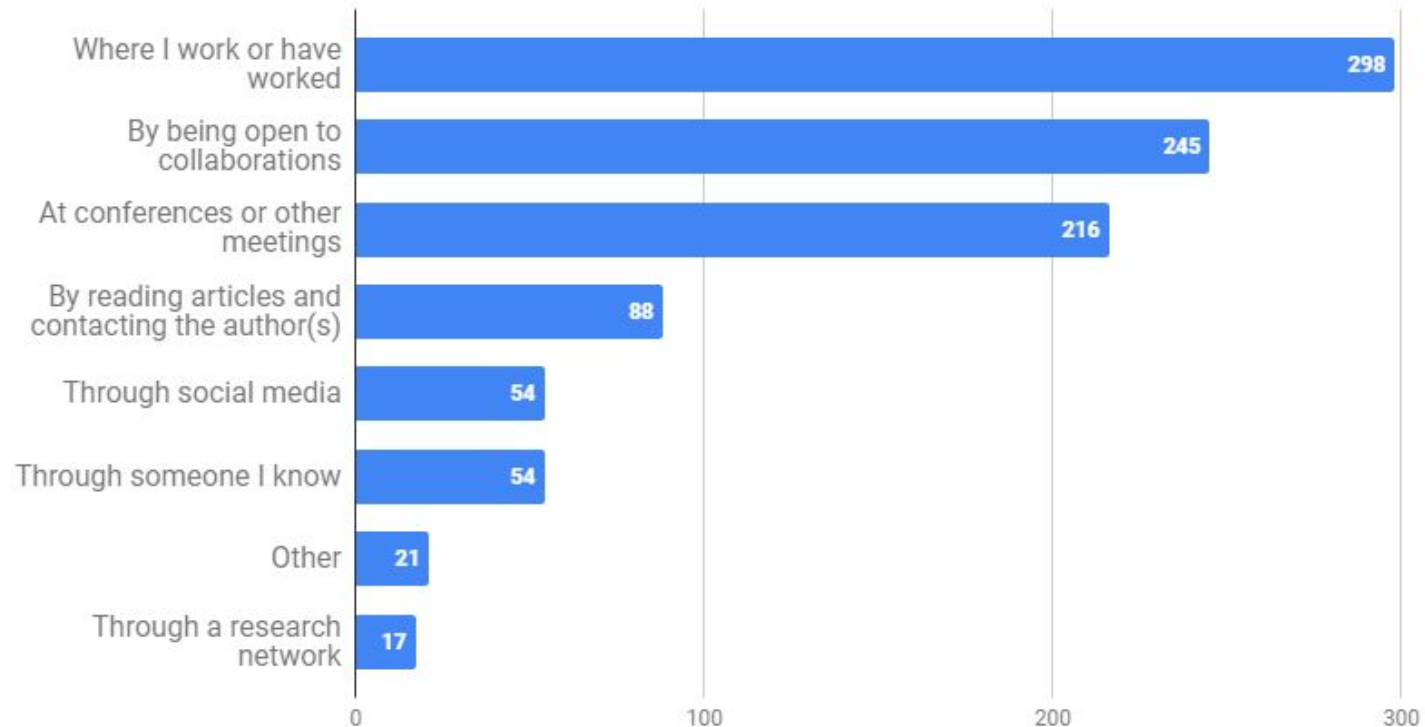
Technologies Supporting Research Collaborations

A network diagram consisting of numerous black dots (nodes) connected by thin, light blue lines (edges). The nodes are scattered across the frame, with some forming small clusters and others being isolated. The overall pattern suggests a complex, interconnected network.

# Finding Research Collaborators Survey

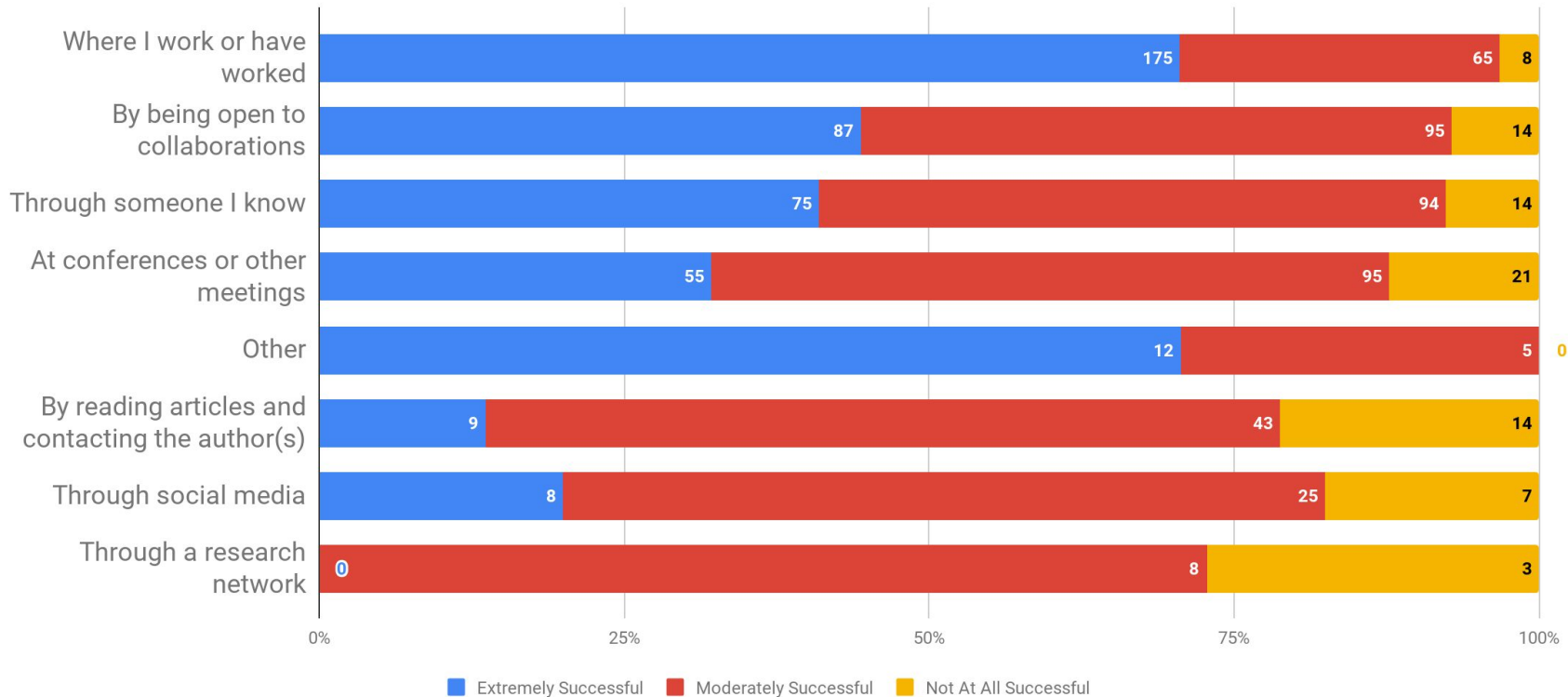
# Collaboration Survey Findings - Strategies

Responses to "I look for and find research collaborator(s)..." (select all that apply)



# Collaboration Survey Findings - Success

## Levels of Success Among Collaboration Strategies





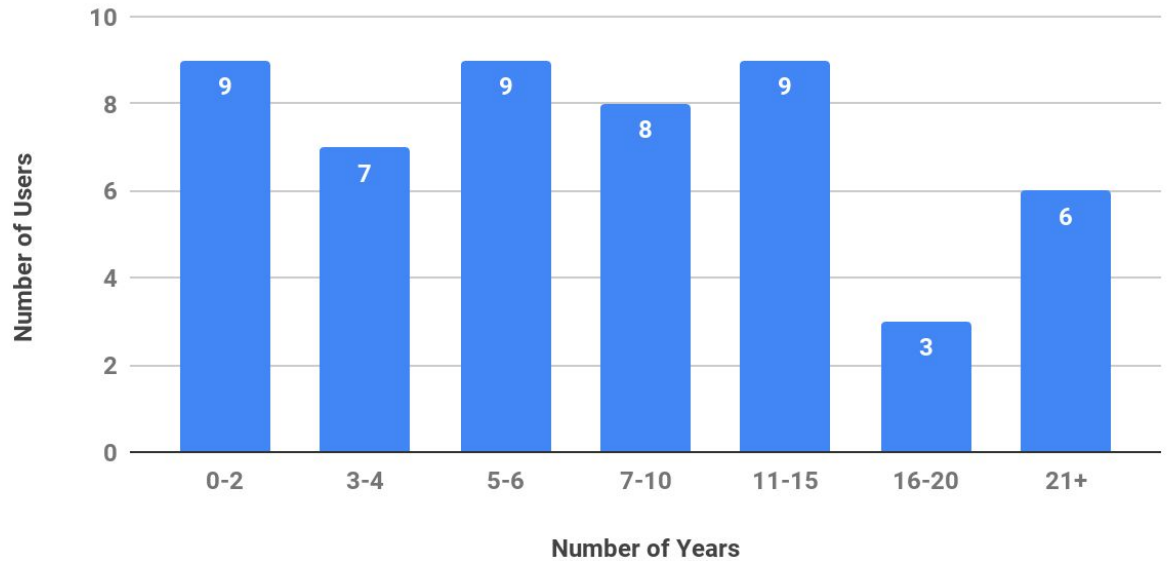
# Other Strategies

- Professional associations and committee work
- Listservs
- Participation in cohort-based programs (IRDL, Immersion)
- Others seek you out
- Alumni networks
- Consortium/professional relationships



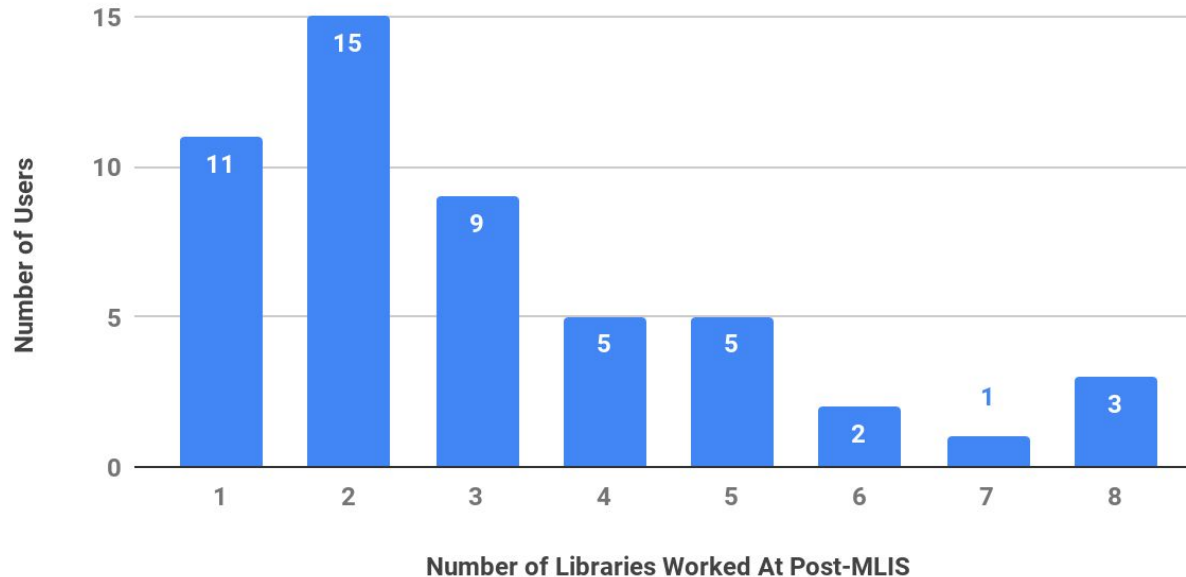
# Collaboration Survey Findings - Social Media and Research Networks Users

Number of Years as a Professional Librarian Among Social Media and Research Network Users



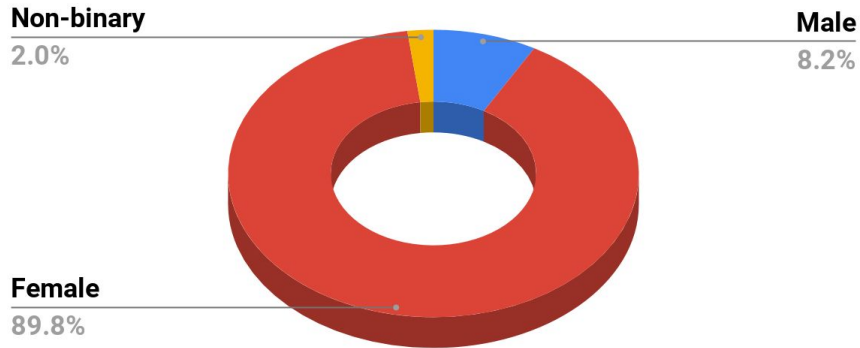
# Collaboration Survey Findings - Social Media and Research Networks Users

Number of Libraries Worked At Post-MLIS Among Social Media and Research Network Users

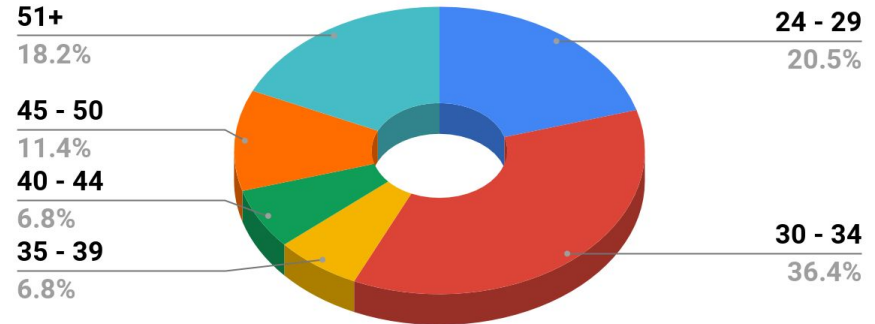


# Collaboration Survey Findings - Social Media and Research Networks Users

## Gender Distribution Among Social Media and Research Network Users



## Age Distribution Among Social Media and Research Network Users



# Takeaways

- Moderate to not at all successful for social media and research networks
- Comments indicated that these avenues were great for following thought leaders and staying engaged with the professional dialogue and trends
- These strategies will likely continue to grow in popularity as social media and research networks gain ground and become established as authoritative/legitimate avenues for professional dissemination
- The users skew toward early career librarians, a demographic that will continue to grow as more librarians retire

# Takeaways from all research

- LIS literature is growing
- Collaboration / coauthorship is growing
- Coauthorship across multiple institutions is rising
- Digital and online tools help to facilitate easier collaborations
- Digital and online tools help to build trust among collaborators



**Near- and  
Long-Term  
Futures**

Easier to have  
relationships  
and/or not  
establish  
relationships

Networks are  
easier to  
create than  
ever

Everyone  
probably has  
multiple  
networks that  
can be fruitful

**Online Collaborative Networks**

# Online Presence



Digital/virtual presence may be used for vetting purposes

Curation of digital identity is all the more important



A network diagram with black dots connected by thin lines, set against a light blue background.

Questions?

## Let's Connect!

**Ngoc-Yen Tran**

Research Impact Librarian

[yen.tran@sjsu.edu](mailto:yen.tran@sjsu.edu)

@libraryen

**Emily K. Chan**

Interim Associate Dean  
for Research and Scholarship

[emily.chan@sjsu.edu](mailto:emily.chan@sjsu.edu)