

January 2015

Hiding in Plain Sight: Record-Breaking Compact Stellar Systems in the Sloan Digital Sky Survey

Michael Sandoval
San Jose State University

Richard Vo
San Jose State University

Aaron Romanowsky
San Jose State University, aaron.romanowsky@sjsu.edu

Jay Strader
Michigan State University

Jieun Choi
Harvard-Smithsonian Center for Astrophysics

See next page for additional authors

Follow this and additional works at: https://scholarworks.sjsu.edu/physics_astron_pub



Part of the [External Galaxies Commons](#)

Recommended Citation

Michael Sandoval, Richard Vo, Aaron Romanowsky, Jay Strader, Jieun Choi, Zachary Jennings, Charlie Conroy, Jean Brodie, Caroline Foster, Alexa Villaume, Mark Norris, Joachim Janz, and Duncan Forbes. "Hiding in Plain Sight: Record-Breaking Compact Stellar Systems in the Sloan Digital Sky Survey" *The Astrophysical Journal Letters* (2015). <https://doi.org/10.1088/2041-8205/808/1/L32>

This Article is brought to you for free and open access by the Physics and Astronomy at SJSU ScholarWorks. It has been accepted for inclusion in Faculty Publications by an authorized administrator of SJSU ScholarWorks. For more information, please contact scholarworks@sjsu.edu.

Authors

Michael Sandoval, Richard Vo, Aaron Romanowsky, Jay Strader, Jieun Choi, Zachary Jennings, Charlie Conroy, Jean Brodie, Caroline Foster, Alexa Villaume, Mark Norris, Joachim Janz, and Duncan Forbes

HIDING IN PLAIN SIGHT: RECORD-BREAKING COMPACT STELLAR SYSTEMS IN THE SLOAN DIGITAL SKY SURVEY

MICHAEL A. SANDOVAL¹, RICHARD P. VO^{1,2}, AARON J. ROMANOWSKY^{1,3}, JAY STRADER⁴, JIEUN CHOI^{5,6},
ZACHARY G. JENNINGS⁶, CHARLIE CONROY⁵, JEAN P. BRODIE³, CAROLINE FOSTER⁷, ALEXA VILLAUME⁶,
MARK A. NORRIS⁸, JOACHIM JANZ⁹, AND DUNCAN A. FORBES⁹

¹Department of Physics and Astronomy, San José State University, One Washington Square, San Jose, CA 95192, USA

²Department of Physics and Astronomy, San Francisco State University, San Francisco, CA, 94131, USA

³University of California Observatories, 1156 High Street, Santa Cruz, CA 95064, USA

⁴Department of Physics and Astronomy, Michigan State University, East Lansing, MI 48824, USA

⁵Harvard-Smithsonian Center for Astrophysics, 60 Garden Street, Cambridge, MA 02138, USA

⁶Department of Astronomy and Astrophysics, University of California, Santa Cruz, CA 95064, USA

⁷Australian Astronomical Observatory, P.O. Box 915, North Ryde, NSW 1670, Australia

⁸Max Planck Institut für Astronomie, Königstuhl 17, D-69117, Heidelberg, Germany

⁹Centre for Astrophysics & Supercomputing, Swinburne University, Hawthorn, VIC 3122, Australia

Received 2015 June 17; accepted 2015 June 26; published 2015 July 23

ABSTRACT

Motivated by the recent, serendipitous discovery of the densest known galaxy, M60-UCD1, we present two initial findings from a follow-up search, using the Sloan Digital Sky Survey, Subaru/Suprime-Cam, and *Hubble Space Telescope* imaging, and SOuthern Astrophysical Research (SOAR)/Goodman spectroscopy. The first object discovered, M59-UCD3, has a similar size to M60-UCD1 (half-light radius of $r_h \sim 20$ pc) but is 40% more luminous ($M_V \sim -14.6$), making it the new densest-known galaxy. The second, M85-HCC1, has a size like a typical globular cluster (GC; $r_h \sim 1.8$ pc) but is much more luminous ($M_V \sim -12.5$). This hypercompact cluster is by far the densest confirmed free-floating stellar system, and is equivalent to the densest known nuclear star clusters. From spectroscopy, we find that both objects are relatively young (~ 9 and ~ 3 Gyr, respectively), with metal-abundances that resemble those of galaxy centers. Their host galaxies show clear signs of large-scale disturbances, and we conclude that these dense objects are the remnant nuclei of recently accreted galaxies. M59-UCD3 is an ideal target for follow-up with high-resolution imaging and spectroscopy to search for an overweight central supermassive black hole as was discovered in M60-UCD1. These findings also emphasize the potential value of ultra-compact dwarfs and massive GCs as tracers of the assembly histories of galaxies.

Key words: galaxies: fundamental parameters – galaxies: nuclei – galaxies: star clusters: general

1. INTRODUCTION

The classic distinction between galaxies and star clusters was riven by the discovery of stellar systems with intermediate sizes and luminosities: the ultracompact dwarfs (UCDs; Hilker et al. 1999; Drinkwater et al. 2000). The nature and origins of these novel objects have been debated ever since, with potentially important implications for how star clusters and galaxies form and evolve—tracing novel modes of star formation, cluster merging, and/or episodes of satellite galaxy accretion (e.g., Fellhauer & Kroupa 2002; Pfeffer et al. 2014).

The UCDs were previously overlooked, not because they were extremely rare, nor especially difficult to observe, but because they did not fit in with preconceptions about known object types. They were, therefore, filtered out during the focused search process (cf. similar oversights discussed in Simons & Chabris 1999; Drew et al. 2013). To those using ground-based imaging to study extragalactic globular clusters (GCs), the UCDs were deemed too bright, and assumed to be foreground stars. To those using the *Hubble Space Telescope* (*HST*), whose fine spatial resolution is well suited for appreciating the extended nature of the UCDs, they appeared too diffuse, and were seen as background galaxies.

Despite this lesson in selection bias, years of research on UCDs ensued without questioning whether or not the parameter space of their properties had been adequately mapped out. The impact of this shortcoming was exemplified

by the emphasis on an apparent size–luminosity relation for UCDs (e.g., Kissler-Patig et al. 2006; Murray 2009; Gieles et al. 2010), which was later argued to be merely a consequence of observational limitations at low surface brightnesses, with the population of large UCDs actually extending to much lower luminosities (Brodie et al. 2011).

It was also assumed that UCDs were restricted to high-density environments, as they were first identified around the central galaxies in the Fornax and Virgo clusters, and indeed had earlier been predicted to form in this context (Bassino et al. 1994). However, UCDs were subsequently found around ordinary field galaxies, implying that their formation does not require such particular circumstances (Hau et al. 2009; Norris & Kannappan 2011; Norris et al. 2014, hereafter N+14).

As a recent step toward a broader understanding of UCDs and other compact stellar systems, Strader et al. (2012) analyzed a mosaic of *HST*/Advanced Camera for Surveys (ACS) images of the Virgo giant elliptical galaxy M60 (NGC 4649), and scrutinized *all* the detected objects to consider whether they might be associated with M60 rather than being discardable as foreground or background contaminants. Consequently, in this single galaxy, spectroscopic follow-up revealed two new varieties of UCDs: very low-luminosity, diffuse objects that bridged the gap between UCDs and extended star clusters (Forbes et al. 2013), and the densest galaxy yet discovered, M60-UCD1 (Strader et al. 2013, hereafter S+13).

M60-UCD1 has a luminosity of $M_V = -14.2$, a stellar mass of $M_* \simeq 2 \times 10^8 M_\odot$, a half-light radius of $r_h \simeq 25$ pc, and a velocity dispersion of $\sigma \simeq 70 \text{ km s}^{-1}$ —properties that are intermediate between the classical UCDs and the compact elliptical galaxies (cEs). This area of parameter space is being studied by the Archive of Intermediate Mass Stellar Systems (AIMSS) Project, which uses archival *HST* images in the first systematic survey for UCDs across the sky (N+14). AIMSS has so far yielded the independent discovery of M60-UCD1 along with somewhat larger objects that now fully bridge the gap between UCDs and cEs and establish a firm link between these seemingly disparate families of stellar systems.

The UCD–cE transition objects have taken on a new dimension of importance with the discovery of a supermassive black hole (SMBH) in M60-UCD1 that accounts for a remarkable 15% of its host galaxy mass (Seth et al. 2014). These “overweight” SMBHs may be a pervasive phenomenon among UCDs, based on their elevated mass-to-light ratios (Mieske et al. 2013; Forbes et al. 2014; Janz et al. 2015). It is therefore timely to search for new objects in this class, some of which have been hiding in plain sight for decades, as they are bright enough to be visible on Digitized Sky Survey images and are included as “stars” in the USNO catalogs. For example, M60-UCD1 has an apparent magnitude of $r = 16.7$, is visible in early photographs (Hubble 1922), and could easily have been discovered through serendipitous spectroscopy, had it been a target in the Sloan Digital Sky Survey (SDSS),¹⁰ as was its fainter cousin M59cO (Chilingarian & Mamon 2008).

One limitation of AIMSS is its confinement to the narrow *HST* camera footprints, covering out to $\sim 2'$ in galactocentric radius (~ 10 kpc in Virgo). The natural venue for continuing the search to larger radii and across a wide swath of the sky is the SDSS, which is the basis for our new UCD data-mining program, with initial results reported here. These include the identification of remarkable, compact stellar systems around two Virgo galaxies: M59 (NGC 4621) and M85 (NGC 4382), at distances of 14.9 ± 0.5 and 17.9 ± 0.5 Mpc, respectively (Blakeslee et al. 2009). The discoveries of these objects are presented in Section 2, the implications discussed in Section 3, and a summary provided in Section 4.

2. THE SEARCH

We have used fairly simple methods to carry out a very rapid search for novel objects in SDSS, as we describe below, with a photometric approach in Section 2.1 and a spectroscopic approach in Section 2.2.

2.1. Photometric Selection: M59-UCD3

We began by using SDSS to search for objects similar to M60-UCD1 and M59cO around giant early-type galaxies (ETGs) in Virgo. The defining characteristics were apparent magnitude ($V \sim 17$), color ($g - i \sim 1.2$), and size. Although such objects are not resolved in SDSS imaging, we noticed that they had “GALAXY” classifications, and Petrosian radii of $2''$ – $3''$ (compared to $\sim 1''.5$ for point sources), so their extended envelopes are detectable in ground-based imaging.

We started by calibrating our detection techniques on M60 and M59, given their known UCD-like objects. Remarkably, the SDSS color–magnitude diagram of sources around M59

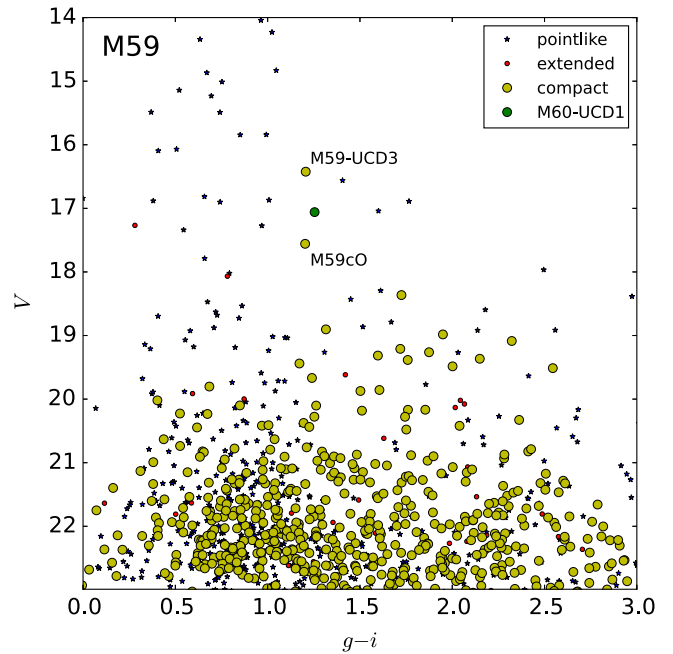


Figure 1. Color–magnitude diagram of sources around M59, based on SDSS-DR7 photometry (Abazajian et al. 2009), out to a galactocentric radius of $7.1'$ (10 galaxy effective radii). The V -band magnitudes are calculated using $g - r$ color conversions from SDSS. (<http://www.sdss.org/dr12/algorithms/sdssUBVRITransform/>) Symbols denote object classifications in the legend, where pointlike objects are “stars,” while extended and compact objects are “galaxies” with Petrosian radii greater than and less than $4''$, respectively. M60-UCD1 is also marked. Two comparable objects appear at $V \sim 17$: M59cO, and a new object, M59-UCD3.

immediately showed M59cO plus another, similar object (Figure 1). This second one, M59-UCD3, appears relatively close to M59 ($2'.2$ or 9.3 kpc projected distance; Figure 2), but was $10''$ beyond the nearest *HST* footprint. Its photometric properties, from SDSS-DR10 (Ahn et al. 2014), are listed in Table 1. Assuming the M59 distance (confirmed below), the absolute magnitude is $M_V = -14.6$, i.e., $\sim 40\%$ more luminous than M60-UCD1.

M59 was imaged as a bonus galaxy in the Sages Legacy Unifying Globulars and GalaxieS Survey (SLUGGS; Brodie et al. 2014).¹¹ The SLUGGS ground-based imaging from Subaru/Suprime-Cam included both long and very short (10 s) exposures, to prevent saturation of bright GCs/UCDs. We used (g, r, i) filters, with $0''.6$ – $0''.9$ seeing.

We reduced these images using a modified version of the SDFRED2 pipeline (Ouchi et al. 2004), and found that M59-UCD3 is clearly extended when compared to a nearby bright star (Figure 2). To measure the size, we use *ishape* (Larsen 1999), which fits the two-dimensional image of the object with a model surface-brightness profile convolved with an empirical point-spread function (PSF).

Using the nearby star for PSF reference, we find a good fit with a King model, and a size of $r_h = 0''.28$ or 20 pc (with uncertainties dominated by systematics). For a reliability check, we also analyze M59cO and M60-UCD1 from the same series of Suprime-Cam images, and find sizes $\sim 20\%$ lower than the *HST*-based measurements (Chilingarian & Mamon 2008; S+13; N+14). More robust size and profile information for M59-UCD3 will require *HST* follow-up, which

¹⁰ <http://www.sdss.org>

¹¹ <http://sluggs.ucolick.org>

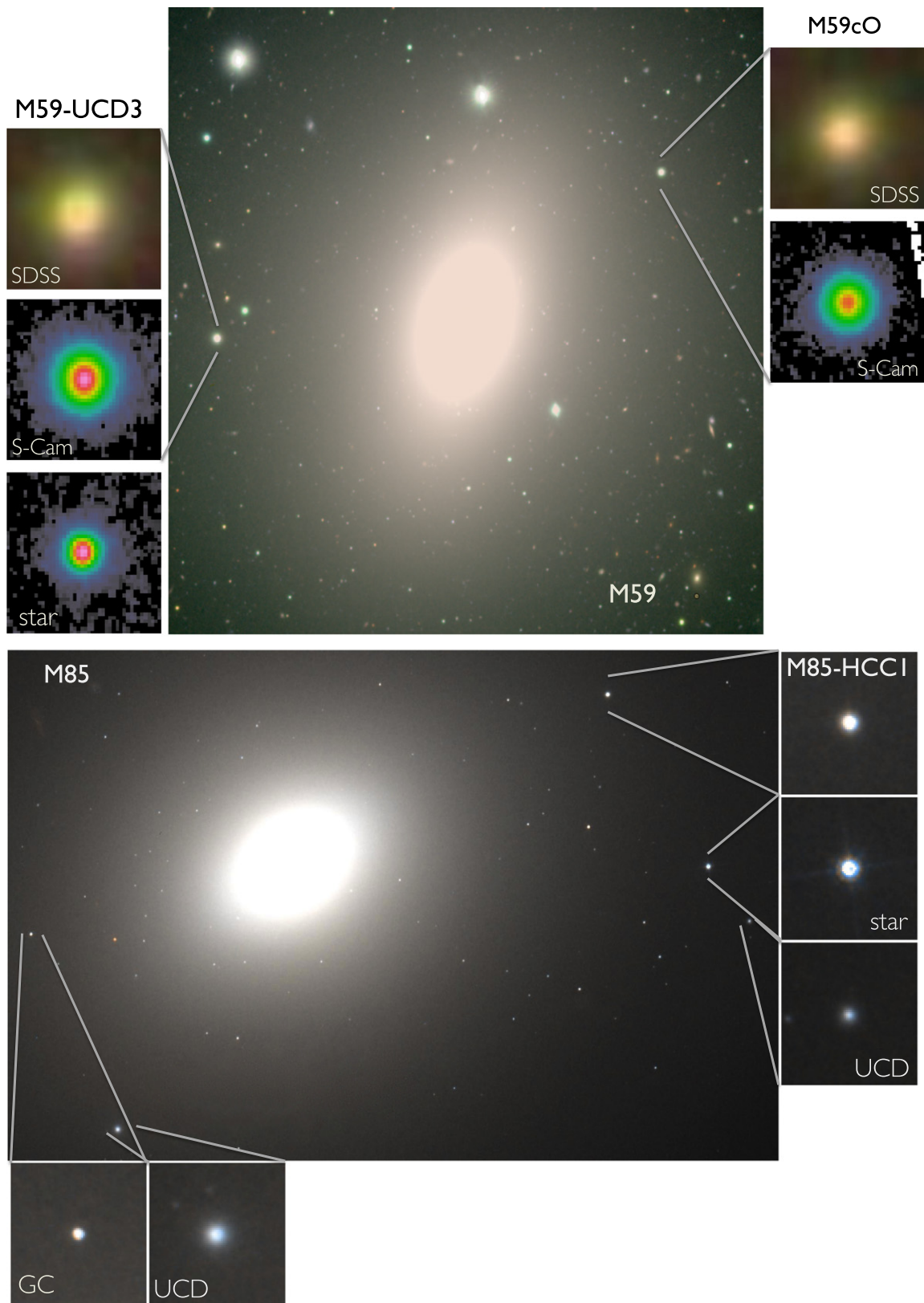


Figure 2. Top: M59 and its accompanying UCDs. The central panel is a $\sim 5'$ (22 kpc) square Suprime-Cam color image. At top on left and right are $8''$ (600 pc) SDSS zoom-ins of M59-UCD3 and M59cO, respectively. Underneath are i -band thumbnails from Subaru/Suprime-Cam, using false color for contrast. At bottom left is a comparison star, using the same scalings. M59-UCD3 is visibly more extended than the star. Bottom: *HST*/ACS image of M85 and surrounding objects, as marked, covering $\sim 1.4 \times 0.9$ (7.3×4.7 kpc).

Table 1
Characteristics of Compact Stellar Systems

Parameter	M59-UCD3	M85-HCC1
R.A. (J2000)	12:42:11.05	12:25:22.84
Decl. (J2000)	+11:38:41.3	+18:10:53.7
r_h (pc)	20 ± 4	1.85 ± 0.9
g	16.81 ± 0.05	19.16 ± 0.03
r	16.00 ± 0.05	18.55 ± 0.05
i	15.61 ± 0.05	18.24 ± 0.06
V	16.34 ± 0.05	18.80 ± 0.03
$M_{V,0}$	-14.60 ± 0.09	-12.55 ± 0.07
v (km s $^{-1}$)	373 ± 18	658 ± 4
M_* (M_\odot)	$(1.8 \pm 0.3) \times 10^8$	$(1.2 \pm 0.1) \times 10^7$
Σ_h (M_\odot pc $^{-2}$)	7.1×10^4	5.8×10^5
[Fe/H] (dex)	-0.01 ± 0.04	-0.06 ± 0.07
[Mg/Fe] (dex)	$+0.13 \pm 0.07$	$+0.05 \pm 0.13$
mean age (Gyr)	8.6 ± 2.2	3.0 ± 0.4

could reveal a two-component profile as in M59cO and M60-UCD1.

We obtained a spectrum of M59-UCD3 with the Goodman High-Throughput Spectrograph (Clemens et al. 2004) on the 4.1 m Southern Astrophysical Research (SOAR) telescope, on 2014 February 9. We used a single 600 s exposure with a 400 l mm $^{-1}$ grating and a 1''03 slit, giving a wavelength coverage of ~ 3100 – 7000 Å and a resolution of 5.7 Å. The spectrum was optimally extracted and wavelength calibrated in the standard manner using IRAF, with skylines used to check for flexure, and has a signal-to-noise ratio of $S/N \sim 55$ Å $^{-1}$ (see top panel of Figure 3). The heliocentric recession-velocity of (373 ± 18) km s $^{-1}$ was derived through cross-correlation with an early K-giant spectrum taken with the same setup. This velocity differs by ~ -90 km s $^{-1}$ from the center of M59, further indicating an association between this large galaxy and M59-UCD3.¹²

2.2. Spectroscopic Selection: M85-HCC1

After identifying M59-UCD3, we continued searching for UCDs around other nearby, luminous ETGs. In addition to SDSS imaging, we now incorporated information from the SDSS spectroscopic database. While far less complete than the photometry, the spectra, where available, allow immediate categorization of many objects without the time-consuming need for follow-up spectroscopy. Such a “Virtual Observatory” approach was used to look for cEs (e.g., Chilingarian et al. 2009; Huxor et al. 2011), but to our knowledge there has been no systematic search for UCDs via SDSS spectroscopy (the discovery of M59cO was serendipitous; Chilingarian & Mamon 2008).

Our spectroscopic search made use of SDSS-DR10, with its expansion of the original SDSS spectral database as part of the SDSS-III surveys¹³ (Dawson et al. 2013). The first galaxy we checked was M85, a Virgo cluster lenticular with disturbed isophotes (we selected it because it was the most luminous candidate not among the well-studied Virgo ellipticals such as M87 and M49). We noticed an intriguing object adjacent to

¹² During the late stages of paper preparation, we learned that another group had independently identified M59-UCD3 as a compact galaxy candidate, using SDSS imaging, and reported it at a conference (Marzke et al. 2006).

¹³ <http://www.sdss3.org>

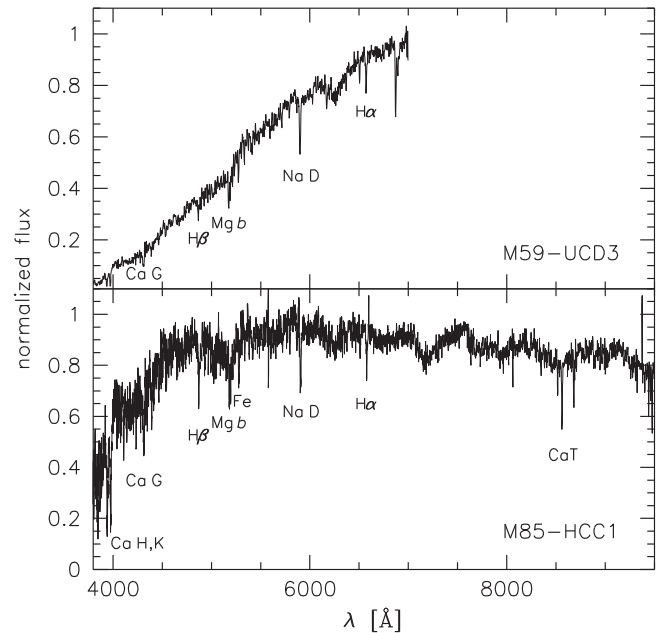


Figure 3. Spectra of M59-UCD3 (top) and M85-HCC1 (bottom), from SOAR/Goodman and SDSS-III/BOSS, respectively. Key absorption lines are indicated.

this galaxy (at 0'.6 or 3.3 kpc), which was classified as a “STAR” photometrically (with a Petrosian radius of 1''.4), but with a spectrum classified as a “GALAXY,” and a recession velocity of 658 ± 4 km s $^{-1}$ —too high for a normal Galactic star, and similar to the velocity of M85 ($\simeq 730$ km s $^{-1}$).

This object was also included in an *HST*/ACS image (Figure 2). Here it appeared very bright and compact but with much less of a diffraction-spike than obvious stars of similar brightness. Our initial *ishape* analysis, using a few PSF-reference stars, yielded a barely resolved size of ~ 1 – 2 pc, depending on the detailed fit-parameters.

A literature search revealed that the object was previously reported as a photometric GC-candidate with r_h of 1.8–1.9 pc, after detailed mapping of PSF variations (Jordán et al. 2009; Chies-Santos et al. 2011).¹⁴ This was the brightest GC candidate cataloged by the ACS Virgo Cluster Survey, just barely making it past their $z \geq 18.0$ selection limit (Jordán et al. 2004).

As discussed in the next section, the properties of this object are unusual enough to motivate a new term, the “hypercompact cluster,” and we have named it M85-HCC1. Its spectrum is shown in Figure 3 (bottom panel).

3. THE NEW OBJECTS IN CONTEXT

After confirming the new objects, and measuring some basic properties, here we present additional analyses, and discuss them in the context of other stellar systems.

First, we place the objects in a diagram of size and luminosity for nearby, spheroidal stellar systems, along with reference lines of constant surface brightness (Figure 4, upper left). For M59-UCD3, the surface brightness (averaged within r_h) is $\sim 2.7 \times 10^4 L_{r,\odot}$ pc $^{-2}$. This is twice as high as the previous

¹⁴ We find that standard King models are not particularly good fits to the existing imaging, and estimate an uncertainty of $\sim 50\%$ in r_h , which should be revisited with future data.

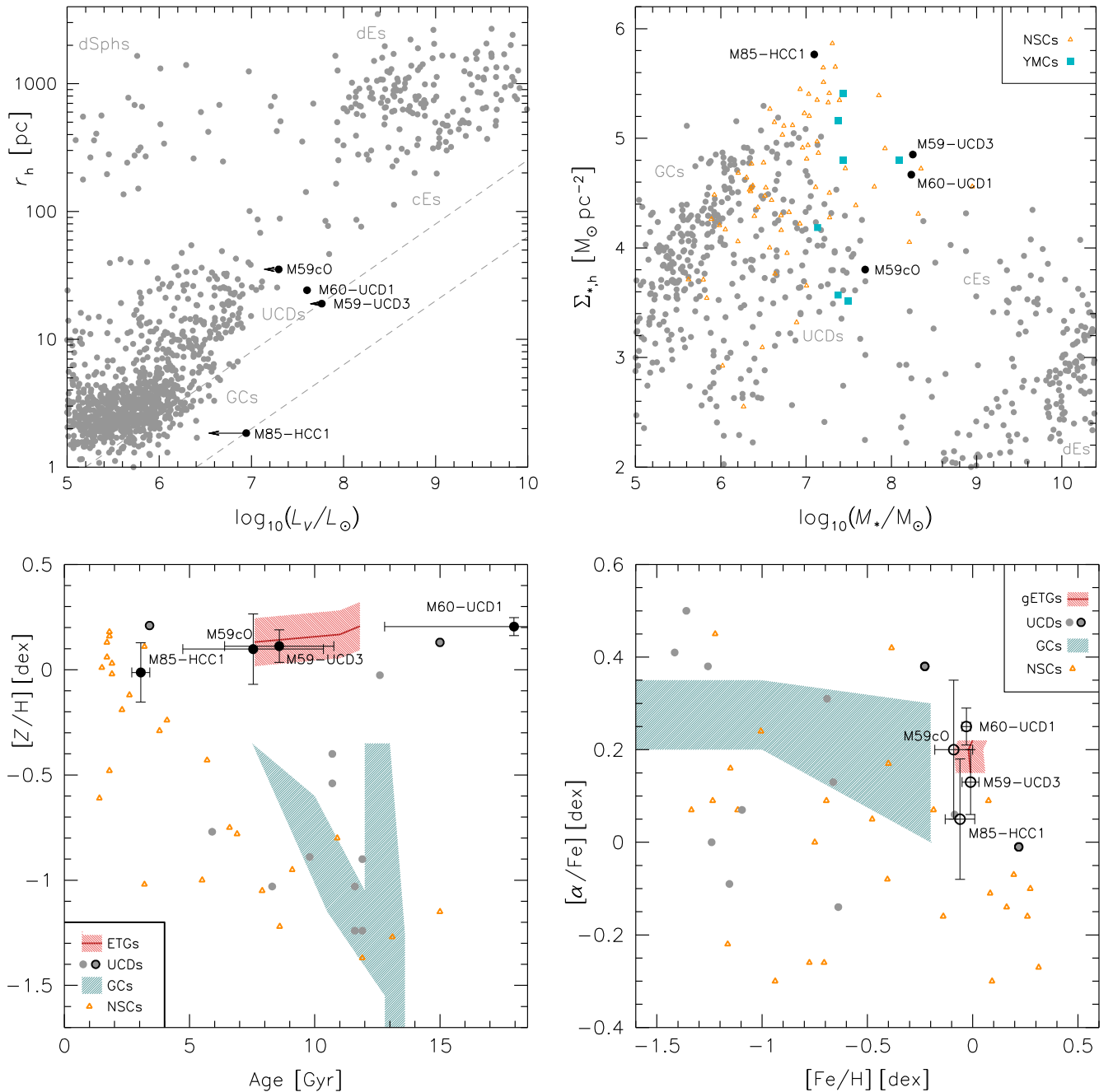


Figure 4. Properties of newly discovered objects in relation to other stellar systems. Upper left: size–luminosity diagram of distance-confirmed stellar systems in the nearby universe. Gray points are from a literature compilation (originally from Brodie et al. 2011, with updates maintained online at http://sages.ucolick.org/spectral_database.html), and black points mark the four dense stellar systems discussed in this paper, with arrows showing predictions for fading to 13 Gyr ages. The dashed lines show constant surface-brightness values of $2.5 \times 10^4 L_{V,\odot} \text{pc}^{-2}$ (top) and $4 \times 10^5 L_{V,\odot} \text{pc}^{-2}$ (bottom). Upper right: stellar average-density vs. mass (data from N+14). Lower panels: stellar populations trends for the four dense stellar systems, compared to other objects for context (see legends for symbols): the centers of large ETGs, UCDs (black borders for $M_* > 3 \times 10^7 M_\odot$), Milky Way GCs, and NSCs (see Pritzl et al. 2005; Brodie et al. 2011; Dotter et al. 2011; Conroy et al. 2014; within the uncertainties, the oldest objects are consistent with 13 Gyr ages). An origin is implied for the “densest objects” as the centers of galaxies.

galactic record-holder, M60-UCD1, making M59-UCD3 a prime target for SMBH follow-up. M59-UCD3 is a younger system (see below), reducing its stellar mass-to-light ratio, with a stellar surface mass density of $\sim 7 \times 10^4 M_\odot \text{pc}^{-2}$ that is $\sim 50\%$ higher than that of M60-UCD1. For volume densities, we use scalings from Wolf et al. (2010), and estimate $\sim 400 L_{r,\odot} \text{pc}^{-3}$ in luminosity, and $\sim 1100 M_\odot \text{pc}^{-3}$ in mass. Scaling to the few-thousand visible stars of the Solar neighborhood (ESA 1997; Binney & Tremaine 2008), an observer in the core of M59-UCD3 would see around a million stars in the sky.

Turning to M85-HCC1, its compactness combined with its luminosity places it nearly in a class of its own among confirmed, free-floating old stellar systems, with a luminosity like the brightest classical UCDs but with a size like the smallest GCs (Figure 4). Although fading with age would place it close to the previously densest-known star cluster, NGC 4494-UCD1 (Foster et al. 2011), that object also shows signs of fading youth (Usher et al. 2015). The mean surface brightness and mass density of M85-HCC1 are $\sim 4 \times 10^5 L_{r,\odot} \text{pc}^{-2}$ and $\sim 6 \times 10^5 M_\odot \text{pc}^{-2}$, which is $\sim 10\times$ denser than

M59-UCD3. The volume densities are $\sim 100\times$ higher: $\sim 7 \times 10^4 L_{r,\odot} \text{pc}^{-3}$ and $\sim 10^5 M_{\odot} \text{pc}^{-3}$.

For additional context, we compare to two classes of object with possible evolutionary connections to UCDs and GCs: young massive clusters (YMCs, generally formed during galactic starbursts), and galactic nuclei—also called nuclear star clusters (NSCs). Stellar masses should be compared, rather than luminosities, since young objects will naturally fade with time (a key issue for the YMCs and NSCs, not so much for the GCs/UCDs).

For our new objects’ stellar masses, we use spectral model fitting (below). For YMCs and NSCs, N+14 have provided a compilation. These objects have a wide range of densities, making them plausible as progenitors of both GCs and UCDs. However, the maximum reported YMC density is $2.5 \times 10^5 M_{\odot} \text{pc}^{-2}$ —lower than M85-HCC1 by half. NSCs, on the other hand, reach higher densities, with the densest one (in the low-luminosity ETG NGC 4476) even surpassing M85-HCC1. We thus conclude that M85-HCC1 is most likely a tidally stripped galaxy-center, and also argue the same for M59-UCD3 based on its properties that are closely analogous to M60-UCD1.

More evidence for the galactic-center origins of both objects would come if overweight SMBHs were detected, as in M60-UCD1. We note that the original motivation for SDSS-III spectroscopy of M85-HCC1 was its X-ray source, which has fairly soft emission and a luminosity of $L_X = 2.6 \times 10^{38} \text{erg s}^{-1}$ (Sivakoff et al. 2003). However, this emission might simply reflect a low-mass X-ray binary, as the estimated stellar encounter rate is extremely high.

We turn next to clues from stellar populations, using stellar population synthesis with full spectral fitting and variable abundance ratios, as in Conroy et al. (2014) and Choi et al. (2014). We fit over the wavelength range 4050–6550 Å, using a high-order polynomial to normalize the continuum, and a Markov Chain Monte Carlo algorithm to explore parameter space and return uncertainties.

The resulting ages, metallicities, and alpha-element enhancements (traced by [Mg/Fe]) are reported in Table 1. Both objects have near-solar metallicities, and probably mildly elevated [Mg/Fe], implying fairly rapid timescales of star formation. Their inferred ages are relatively young: ~ 6 –11 Gyr for M59-UCD3, and ~ 3 Gyr for M85-HCC1. For comparison, we have re-modeled the available spectra from M60-UCD1 (MMT/Hectospec) and M59cO (SDSS), and placed them in plots of metallicity versus age and [Mg/Fe] (Figure 4, lower panels). M59-UCD3 shows similar properties to M59cO, suggesting they may be coeval (perhaps arising from the same or associated merger event).

For additional context, we also plot other objects from the literature. M59cO, M59-UCD3, and M60-UCD1 follow a high-metallicity trend seen in other massive UCDs (as discussed in Brodie et al. 2011), and in the centers of large ETGs—in contrast to dwarf-galaxy nuclei and to GCs. M85-HCC1 is an ambiguous case, and might have originated in either a dwarf or giant galaxy. A more detailed discussion of individual elements is postponed, while here we only note an intriguing finding that nitrogen and sodium are elevated in M59cO and M60-UCD1 (see also S+13), but not in M59-UCD3 and M85-HCC1.

We also consider the current environments of these four unusual objects. M60 shows indications of substructure in its GC system (D’Abrusco et al. 2015), although M60-UCD1 may

have formed in a different, earlier event. The host galaxy M85 is well known to show large-scale disturbances in its stellar light, signifying a merger within the past few Gyr, which is also reflected in a ~ 1.5 –2.0 Gyr age for both its central stars and the bulk of its central GCs (Trancho et al. 2014). It is furthermore the “poster-child” for red, diffuse star clusters, with ~ 160 of these curious objects within the central ~ 10 kpc (Peng et al. 2006). These are generally thought to be residues either of gas-rich mergers or of faded open clusters from spiral disks.

M59 is a less apparent merger case, as may be expected given the older ages of M59-UCD3 and M59cO. However, it hosts a dramatic, coherent central GC substructure (D’Abrusco et al. 2015). We speculate based on all the available information that M59 and M85 experienced fairly recent mergers with intermediate-mass early-type and late-type galaxies, respectively.

4. CONCLUSIONS

We have presented the discoveries of two unique compact stellar systems, M59-UCD3 and M85-HCC1, based initially on publicly available photometric and spectroscopic data from SDSS/SDSS-III and *HST*. Further confirmation and characterization have come from Subaru imaging and SOAR spectroscopy.

These two objects were found to be the densest galaxy and densest free-floating star system, respectively—raising questions about how many more such objects exist, and how well the boundaries for stellar systems in size–luminosity parameter space are known. The objects may also provide clues to the physics underlying the observed maximum central surface density for stellar systems of $\sim 10^5 M_{\odot} \text{pc}^{-2}$ (Hopkins et al. 2010).

Through examination of density, age, metallicity, alpha-elements, and X-ray emission, along with evidence for recent mergers in the host galaxies, we conclude that the two new objects, plus two from the literature, are most likely the stripped centers of galaxies. There is strong potential for confirming this scenario in M59-UCD3 by adaptive-optics search for an overmassive SMBH. We also emphasize that the post-merger indestructibility of such dense objects may in general allow them to be used as tags for the assembly histories of their host galaxies.

We thank the SJSU ASTR-117B class for their endurance through UCD fever, Katy Murphy for helpful discussions, Cindy Tsui for artistic assistance, and the referee for a quick and helpful report. We are immensely grateful for the efforts of SDSS, SDSS-III, and the Hubble Legacy Archive in making their data easily accessible to anyone in the world with an internet connection. This work was supported by National Science Foundation (NSF) grant AST-1109878, by SJSU Undergraduate Research Grants, and by the ARC (DP130100388). It used data from the Subaru telescope (National Astronomical Observatory of Japan) and the Southern Astrophysical Research (SOAR) telescope (joint project of Brasil, NOAO, UNC, MSU). SDSS/SDSS-III was funded by the Alfred P. Sloan Foundation, the Participating Institutions, the NSF, the U. S. Department of Energy, the National Aeronautics and Space Administration, the Japanese Monbukagakusho, the Max Planck Society, and the Higher Education Funding Council for England.

REFERENCES

- Abazajian, K. N., Adelman-McCarthy, J. K., Agüeros, M. A., et al. 2009, *ApJS*, **182**, 543
- Ahn, C. P., Alexandroff, R., Allende Prieto, C., et al. 2014, *ApJS*, **211**, 17
- Bassino, L. P., Muzzio, J. C., & Rabolli, M. 1994, *ApJ*, **431**, 634
- Binney, J., & Tremaine, S. 2008, *Galactic Dynamics* (Princeton: Princeton Univ. Press)
- Blakeslee, J. P., Jordán, A., Mei, S., et al. 2009, *ApJ*, **694**, 556
- Brodie, J. P., Romanowsky, A. J., Strader, J., & Forbes, D. A. 2011, *AJ*, **142**, 199
- Brodie, J. P., Romanowsky, A. J., Strader, J., et al. 2014, *ApJ*, **796**, 52
- Chies-Santos, A. L., Larsen, S. S., Wehner, E. M., et al. 2011, *A&A*, **525**, A19
- Chilingarian, I., Cayatte, V., Revaz, Y., et al. 2009, *Sci*, **326**, 1379
- Chilingarian, I. V., & Mamon, G. A. 2008, *MNRAS*, **385**, L83
- Choi, J., Conroy, C., Moustakas, J., et al. 2014, *ApJ*, **792**, 95
- Clemens, J. C., Crain, J. A., & Anderson, R. 2004, *Proc. SPIE*, **5492**, 331
- Conroy, C., Graves, G. J., & van Dokkum, P. G. 2014, *ApJ*, **780**, 33
- D'Abrusco, R., Fabbiano, G., & Zezas, A. 2015, *ApJ*, **805**, 26
- Dawson, K. S., Schlegel, D. J., Ahn, C. P., et al. 2013, *AJ*, **145**, 10
- Dotter, A., Sarajedini, A., & Anderson, J. 2011, *ApJ*, **738**, 74
- Drew, T., Vö, M. L.-H., & Wolfe, J. M. 2013, *Psychological Science*, **24**, 1848
- Drinkwater, M. J., Jones, J. B., Gregg, M. D., & Phillipps, S. 2000, *PASA*, **17**, 227
- ESA 1997, *The HIPPARCOS and TYCHO Catalogues* (ESA SP-1200; Noordwijk: ESA)
- Fellhauer, M., & Kroupa, P. 2002, *MNRAS*, **330**, 642
- Forbes, D. A., Norris, M. A., Strader, J., et al. 2014, *MNRAS*, **444**, 2993
- Forbes, D. A., Pota, V., Usher, C., et al. 2013, *MNRAS*, **435**, L6
- Foster, C., Spitler, L. R., Romanowsky, A. J., et al. 2011, *MNRAS*, **415**, 3393
- Gieles, M., Baumgardt, H., Heggie, D. C., & Lamers, H. J. G. L. M. 2010, *MNRAS*, **408**, L16
- Hau, G. K. T., Spitler, L. R., Forbes, D. A., et al. 2009, *MNRAS*, **394**, L97
- Hilker, M., Infante, L., Vieira, G., Kissler-Patig, M., & Richtler, T. 1999, *A&AS*, **134**, 75
- Hopkins, P. F., Murray, N., Quataert, E., & Thompson, T. A. 2010, *MNRAS*, **401**, L19
- Hubble, E. P. 1922, *ApJ*, **56**, 162
- Huxor, A. P., Phillipps, S., Price, J., & Harniman, R. 2011, *MNRAS*, **414**, 3557
- Janz, J., Forbes, D. A., Norris, M. A., et al. 2015, *MNRAS*, **449**, 1716
- Jordán, A., Blakeslee, J. P., Peng, E. W., et al. 2004, *ApJS*, **154**, 509
- Jordán, A., Peng, E. W., Blakeslee, J. P., et al. 2009, *ApJS*, **180**, 54
- Kissler-Patig, M., Jordán, A., & Bastian, N. 2006, *A&A*, **448**, 1031
- Larsen, S. S. 1999, *A&AS*, **139**, 393
- Marzke, R. O., Pellegrini, P., da Costa, L., Maia, M., & Burstein, D. 2006, *BAAS*, **38**, 178.04
- Mieske, S., Frank, M. J., Baumgardt, H., et al. 2013, *A&A*, **558**, A14
- Murray, N. 2009, *ApJ*, **691**, 946
- Norris, M. A., & Kannappan, S. J. 2011, *MNRAS*, **414**, 739
- Norris, M. A., Kannappan, S. J., Forbes, D. A., et al. 2014, *MNRAS*, **443**, 1151 (N+14)
- Ouchi, M., Shimasaku, K., Okamura, S., et al. 2004, *ApJ*, **611**, 660
- Peng, E. W., Côté, P., Jordán, A., et al. 2006, *ApJ*, **639**, 838
- Pfeffer, J., Griffen, B. F., Baumgardt, H., & Hilker, M. 2014, *MNRAS*, **444**, 3670
- Pritzl, B. J., Venn, K. A., & Irwin, M. 2005, *AJ*, **130**, 2140
- Seth, A. C., van den Bosch, R., Mieske, S., et al. 2014, *Natur*, **513**, 398
- Simons, D. J., & Chabris, C. F. 1999, *Perception*, **28**, 1059
- Sivakoff, G. R., Sarazin, C. L., & Irwin, J. A. 2003, *ApJ*, **599**, 218
- Strader, J., Fabbiano, G., Luo, B., et al. 2012, *ApJ*, **760**, 87
- Strader, J., Seth, A. C., Forbes, D. A., et al. 2013, *ApJL*, **775**, L6 (S+13)
- Trancho, G., Miller, B. W., Schweizer, F., Burdett, D. P., & Palamara, D. 2014, *ApJ*, **790**, 122
- Usher, C., Forbes, D. A., Brodie, J. P., et al. 2015, *MNRAS*, **446**, 369
- Wolf, J., Martinez, G. D., Bullock, J. S., et al. 2010, *MNRAS*, **406**, 1220