

1998

Chinese geomancy

Andrew William Broer
San Jose State University

Follow this and additional works at: https://scholarworks.sjsu.edu/etd_theses

Recommended Citation

Broer, Andrew William, "Chinese geomancy" (1998). *Master's Theses*. 1734.
DOI: <https://doi.org/10.31979/etd.5skz-mef8>
https://scholarworks.sjsu.edu/etd_theses/1734

This Thesis is brought to you for free and open access by the Master's Theses and Graduate Research at SJSU ScholarWorks. It has been accepted for inclusion in Master's Theses by an authorized administrator of SJSU ScholarWorks. For more information, please contact scholarworks@sjsu.edu.

INFORMATION TO USERS

This manuscript has been reproduced from the microfilm master. UMI films the text directly from the original or copy submitted. Thus, some thesis and dissertation copies are in typewriter face, while others may be from any type of computer printer.

The quality of this reproduction is dependent upon the quality of the copy submitted. Broken or indistinct print, colored or poor quality illustrations and photographs, print bleedthrough, substandard margins, and improper alignment can adversely affect reproduction.

In the unlikely event that the author did not send UMI a complete manuscript and there are missing pages, these will be noted. Also, if unauthorized copyright material had to be removed, a note will indicate the deletion.

Oversize materials (e.g., maps, drawings, charts) are reproduced by sectioning the original, beginning at the upper left-hand corner and continuing from left to right in equal sections with small overlaps. Each original is also photographed in one exposure and is included in reduced form at the back of the book.

Photographs included in the original manuscript have been reproduced xerographically in this copy. Higher quality 6" x 9" black and white photographic prints are available for any photographs or illustrations appearing in this copy for an additional charge. Contact UMI directly to order.

UMI

A Bell & Howell Information Company
300 North Zeeb Road, Ann Arbor MI 48106-1346 USA
313/761-4700 800/521-0600

CHINESE GEOMANCY

A Project Report

Presented to

The Faculty of the Department of Interdisciplinary Studies

San Jose State University

In Partial Fulfillment

of the Requirements for the Degree

Master of Arts

by

**Andrew William Broer
December 1998**

UMI Number: 1392799

UMI Microform 1392799
Copyright 1999, by UMI Company. All rights reserved.

**This microform edition is protected against unauthorized
copying under Title 17, United States Code.**

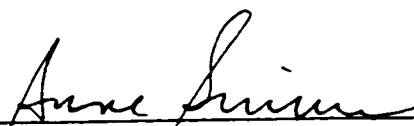
UMI
300 North Zeeb Road
Ann Arbor, MI 48103

© 1998


Andrew William Broer

ALL RIGHTS RESERVED


APPROVED FOR THE DEPARTMENT OF INTERDISCIPLINARY
STUDIES



Dr. Anne Simonson



Dr. Christian Jochim



Dr. Linda Main

APPROVED FOR THE UNIVERSITY



ABSTRACT
CHINESE GEOMANCY

by Andrew W. Broer

This creative project establishes a website for the better understanding of Chinese *Feng Shui*. The project makes publicly available information on this esoteric aspect of Chinese religion and philosophy. The ultimate goal is for the website to educate a worldwide audience. The entirety of the project is to acquire, then build from concept a web server to host a geomancy website.

The Internet Protocol (IP) address, hardware, system software, and server software were assembled and loaded. A speedy internet access point was then obtained to link the server to the World Wide Web. Original photography and works of art were collected and created to illustrate the text. HTML (Hypertext Markup Language) pages and a CGI (Common Gateway Interface) script were created to explain and involve the website participants.

The site's address is: <http://www.mitch.org/andy/index.html>

Chinese Geomancy

The creative project found at: <http://www.mitch.org/andy/index.html> is the subject of this short introduction.

The idea for this project was originally to produce a public television broadcast of thirty to sixty minutes. The World Wide Web has grown substantially from 1991 to 1998. The idea of a broadcast was changed to a website to take advantage of this growth in technology and access a potentially larger audience.

The topic of Chinese geomancy is still not very well known by the general public. In 1991 the number of websites dedicated to this aspect of Chinese religion and philosophy was very low. Since 1991, geomancy or *Feng Shui* has become much more popular. The number of sites that present fair information however, is still lacking. The quality of the content available is often deficient. The quantity of comprehensive *Feng Shui* information on one site is not attainable anywhere. There is also the inevitable sale. The majority of geomancy related sites are virtual store fronts for questionable people peddling to the internet shopper.

There are a few decent web based organizations. One circle of sites, or Web Ring, is a group called the Wandering Daoists. This group is currently comprised of 77 websites related to some facet of Taoism. This project, it is hoped, will be a part of this Web Ring soon.

This project required the attainment of all computer hardware. There was no existing server. A Power Macintosh 8100/100 was built to task to act as the web server. Memory upgrades and operating system updates were needed to make the system viable. 100Mb (Megabit) network hardware was attached to allow access to a DNS (Dynamic Name Server). The IP (Internet Protocol) address 205.178.30.21

has been made available for a period no less than one year through a generous donation. The site will most likely migrate to a new IP address once the year is exhausted. Additionally, the project required a location for the server. Intelligent Paradigm Inc. in Cupertino, California magnanimously offered to host the system.

The site's content is purposely geared toward the internet audience, while still being informative. The hope was that it would be enjoyable to read while educating the visitor. The site's implementation of HTML (Hypertext Markup Language) and CGI (Common Gateway Interface) scripts required the creation of four databases to output visitor requested information. The CGI that was written formulates the requestor's Chinese zodiac animal, element, stem and branch into the years of the Chinese Cycle of Sixty. This Cycle of Sixty is roughly equivalent to Western centuries. The information is then displayed through an HTML page that the CGI script creates. HTML links to descriptions of the animal and element types are returned to the requestor. The links bring the viewer into a personalized Chinese horoscope that is always considered during a geomantic reading.

The layout of the site as well as the content must be considered part of the project as well. The use of frames in the HTML was deliberate. Frames allow the user to navigate through this site easily, but also accommodate the use of links outside of this project. The background design, embossed characters of *Feng Shui*, was used in all the local HTML pages as a visual link. There are several places elsewhere on the internet where more detailed information was available. When appropriate, those links were designed to display information into the largest frame. The appearance of the outside information is encapsulated within this site to strengthen its impact on the visitor.

The title bar Chinese Geomancy is fixed to give the visitor a sense of their ultimate location. It was created from traditional designs. The graphic's colors were chosen to suggest wealth and well being. The border pattern is a cloud pattern chosen to imply prosperity.

The left hand frame was designed to be the site navigator. It automatically scrolls to allow viewing of the more than thirty web links to information.

Original photography, shot on location in three continents, adds to the site's appearance. The simple yet stylized drawings are also original. The drawings were produced solely for the purpose of illustrating this site.

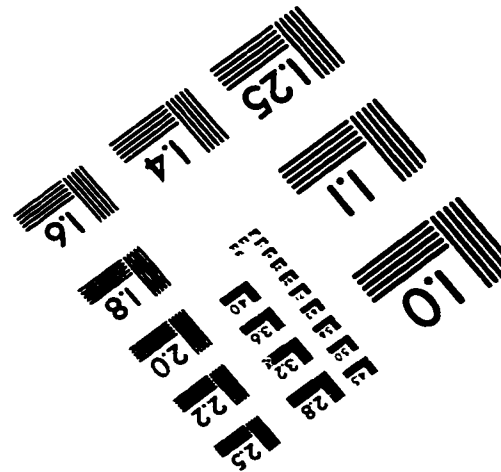
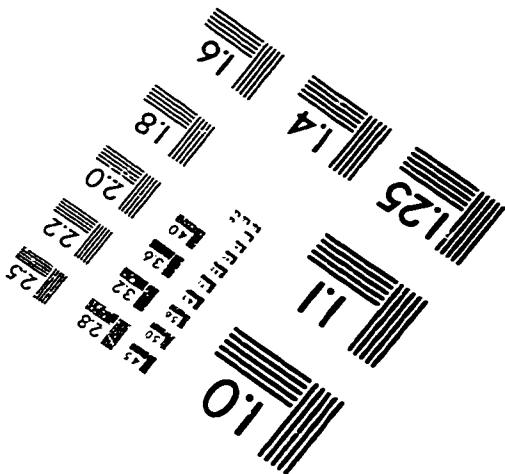
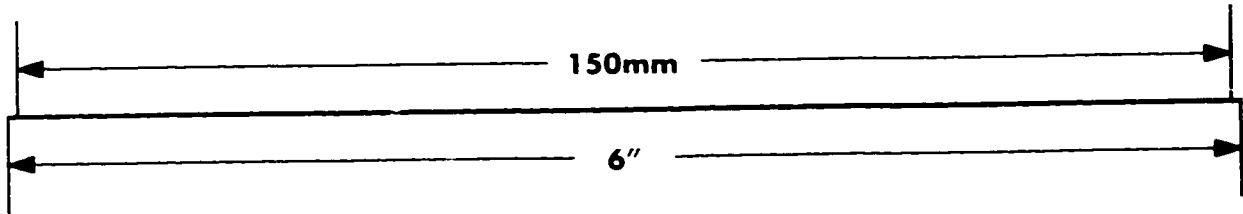
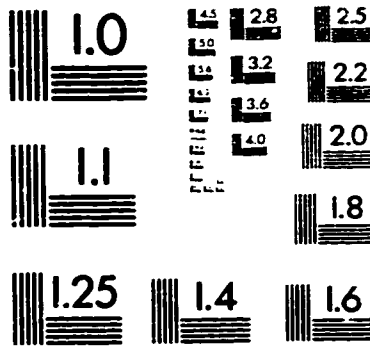
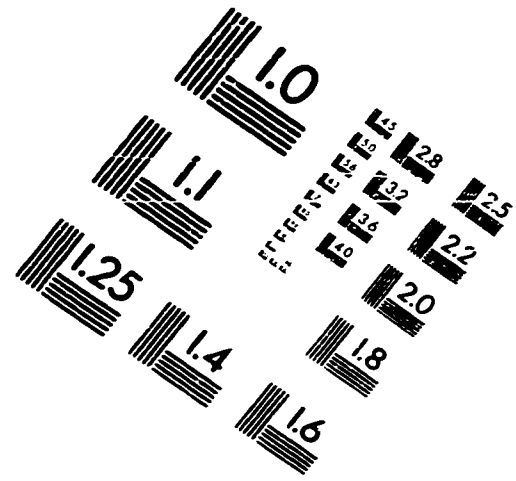
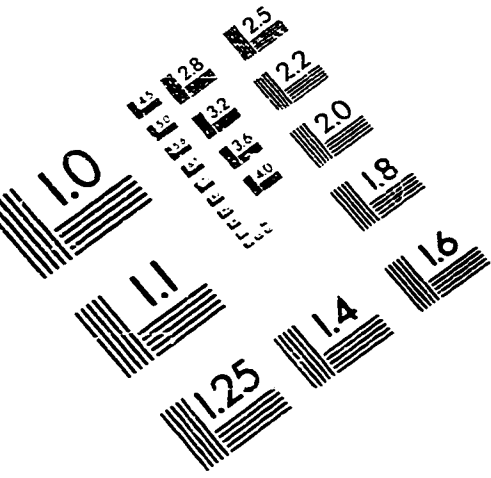
A web counter, located on the first content page, keeps track of web traffic. The numerals are appropriately in Chinese.

Unlike many projects, this one has really only started. This is simply the birth of the site. It will persist beyond its review as a creative project. It will grow and flourish, adding to the collective knowledge of the Web.

Works cited in the project

- Bloomfield, Frena. *The Book of Chinese Beliefs*. New York: Ballantine, 1983.
- Capra, Fritjof. *The Tao of Physics*. Boston: Shambhala, 1975.
- Chuen, Master Lam Kam. *Feng Shui Handbook*. New York: Holt, 1996.
- Eitel, Ernest J. *Feng Shui*. Singapore: Synergetic Press, 1984.
- Lip, Evelyn. *Feng Shui: A Layman's Guide to Chinese Geomancy*. Singapore: Times Editions PTE LTD, 1979.
- Rossbach, Sarah. *Interior Design with Feng Shui*. New York: Penguin, 1987.
- Rossbach, Sarah and Master Lin Yun. *Living Color: Master Lin Yun's Guide to Feng Shui and the Art of Color*. New York: Kodansha, 1994.
- Skinner, Stephen. *The Living Earth Manual of Feng Shui*. New York: Penguin, 1982.
- Too, Lillian. *The Complete Illustrated Guide to Feng Shui*. Brisbane: Element, 1996.
- Walters, Derek. *The Feng Shui Handbook*. London: Aquarian, 1991.
- Xing, Qi. *Folk Customs at Traditional Chinese Festivities*. Beijing: Foreign Languages Press, 1988 .

IMAGE EVALUATION TEST TARGET (QA-3)



APPLIED IMAGE . Inc
 1653 East Main Street
 Rochester, NY 14609 USA
 Phone: 716/482-0300
 Fax: 716/288-5989

© 1993, Applied Image, Inc., All Rights Reserved