

# Spartan Daily

SAN JOSE STATE COLLEGE

VOL. 48

SAN JOSE, CALIFORNIA, FRIDAY, OCTOBER 7, 1960

No. 8

## 'Perspective' Returns To Air; Monday Deadline Set For ASB Applications

"Perspective," the Speech and Drama department's student-training series of television programs, will be on the air again this fall with nine fine arts programs scheduled before Christmas, co-producer Dr. Clarence E. Flick announced today.

Dr. Flick, associate professor of drama, said the initial presentation tomorrow will be by the SJS marching band, directed by Roger Muzzy, assistant professor of music. It will be transmitted via microwave to KNTV from TH34 at noon.

Prof. Flick, Richard B. Elliot, assistant professor of drama, and Frank T. McCann, assistant professor of speech, are producers of the series. Mel Swope is the student producer-coordinator.

The schedule for the rest of October includes a program on ceramic art on Oct. 15, 2:30 p.m.; one on industrial design on Oct. 22, 2:30 p.m. and an unspecified program of the series will be broadcast over KNTV.

"These programs are primarily to train radio and television students," Dr. Flick said, and added that "secondarily, they are intended to bring the resources of the college to the community. All our programs will be concerned with a view of college arts."

In addition to producing the program, Dr. Flick elaborated, the students also survey viewer participation through telephone checks. Last year a figure of 7500 to 11,000 watchers for each program was obtained.

### SJS Prof To Talk On Political Issue

"A Roman Catholic for President," will be discussed at the Episcopal college group Sunday, Barbara Arnold, college worker for the Episcopal church, announced today.

Dr. Richard W. Staveley, professor of political science at SJS, will lead the talk which begins 6:45 p.m. in the new Christian center, 300 S. 10th st.

### Rios Explains ROTC Program

## Leadership Essential to U.S., Says Military Science Head

By DAN PETERSEN

Lt. Col. Edwin T. Rios, who replaced Lt. Col. Edward S. Robbins as head of the SJS military science department this semester, said it is essential that the U.S. have a large core of highly trained leaders in case of war.

"The main job of the Army ROTC program is to help select and develop these leaders," he said.

"The strength of our army is the strength of our people," Col. Rios declared.

A 20 year man in the army, the colonel has seen war first hand.

### ESCAPES CHINESE

He barely escaped the Chinese communist onslaught from the Yalu river during the Korean War. He was a company commander in the 15th Infantry Regiment that fought a rear guard action at the Hamhung perimeter. On Christmas eve, 1951, Colonel Rios was on one of the last 12 ships that evacuated the area as the Chinese closed in.

Later in the war he was in charge of operations of the 8th Army tactical psychological warfare conducted against the Chinese and North Koreans.

His staff coordinated intelligence, production and dissemination of media designed to reduce the will to fight of the enemy soldier.

### PSYCHOLOGICAL PLANS

"Our intelligence men would interview prisoners and try to find out as much as possible," explained Colonel Rios. "Then we would develop psychological plans capitalizing on discovered weaknesses."

High speed presses of Army production teams would produce the material within a matter of hours. Then dissemination units would deliver the propaganda by plane, artillery leaflets or loud speaker trucks.

"When our warfare was a success, it was a dramatic success!" Colonel Rios said.

### HAD ENOUGH

"Our intelligence found out a lot about them and every time

## Suzanne Lusty Named Delegate To Convention

San Jose State's Speech Correction and Hearing club last night voted to send a delegate to the national convention of the American Speech and Hearing association Nov. 1-5 in Los Angeles.

She is Suzanne Lusty, a senior education and speech correction major from Yakima, Wash.

At the convention James L. L. Aten, assistant professor of speech, will read a paper on stuttering. Professor Aten, the club's adviser, in SJS coordinator of Speech Correction and Hearing clinical services.

Officers elected at the meeting for the 1960-61 year are Bob Silveira, president; Lee Walters, vice president; Jodene Smith, secretary; Marilyn Graham, treasurer; Diane Reinert, representative; Miss Lusty, historian and Dave Giten and Pat Knudson, social chairmen.

### Radio Station KPFA To Air UN Speeches

KPFA, a current events FM radio station at Berkeley, announced yesterday they will broadcast nine major U.N. speeches Saturday.

The speeches will include those made by President Eisenhower, Premier Khrushchev, Premier Castro and Prime Minister McMillan.

The speeches will be broadcast from 9 a.m. to 1:30 p.m., and again from 3:15 p.m. until they are completed.

Applications will close Monday at 2:30 p.m. for 49 ASB positions, says Pat McClenahan, SJS student body president. Interviews for applicants will be held Oct. 10-14.

Posts available are: executive council, corresponding secretary, personnel officer; Student Council, senior representative; ASB judiciary, student justice; Student Activities board, student government bulletin board manager.

Awards board, secretary, three student members at large; Spartan Shops Board, inc., five student representatives; College Life committee, four student representatives; College Union Planning committee, six student representatives.

Community Service committee, chairman; Fairness committee, five student representatives; Radio and Television committee, one student representative; Publications committee, one student representative.

### Applications Open

Candidates for freshman representative to the Student Council may obtain applications for the four offices open at the College Union until Wednesday.

Petitions for class council posts are also available.

Gary Wood, election board chairman, announced that all applications and petitions must be turned in by 5 p.m. Oct. 12.

representative; Lecture committee, two student representatives.

Parking committee, one student representative; College Community Relations committee, two student representatives; Founders Day committee, two student representatives; Improvement of Instruction committee, two student representatives.

Selah Periera, one student representative; Rally committee, chairman; Revelries board, one student representative; Public Relations board, five student members at large.

## Shots Against Five Diseases Given Today

Immunization shots against five major diseases will be given today, beginning at 1 p.m., Dr. Thomas Gray, director of student health services, has announced.

Polio vaccination, originally scheduled for today, will be delayed until Oct. 16, because of a late shipment, Dr. Gray said.

Immunization is required of certain students in nursing, occupational therapy, ROTC, and AFROTC.

Applications for the shots, which are available to all students eligible for health service, will be supplied in the Health office. Students under 21 must have parental approval, Dr. Gray has indicated.

The series of typhoid-paratyphoid, diphtheria-tetanus, smallpox vaccine, or influenza vaccine can be taken singly or together any Friday (unless it precedes a holiday or vacation) throughout the semester. The clinic will be open from 1-4 p.m. for the shots.

According to Sgt. Clifford Doll of the AFROTC and Sgt. Virgil Cullen of ROTC, students must have immunization shots for smallpox, typhoid, tetanus and polio before leaving for summer camp.

For occupational therapy majors, the vaccinations are necessary before starting clinical work, R. B. Cragin, college physician, said.

The shots are also a requirement for all nursing majors, Miss Grace Staple, nursing department head, has stated.

### Book Refunds in Today

Today is the last day to return books to the Spartan bookstore for a full cash refund, according to Harry Wineroth, store manager.

Wineroth said it is essential students bring their cash register receipts with them. Returned books must be clean and resalable to get the full price, he added.

## SJS Band To March In New Uniforms

The SJS marching band has uniforms to replace their 11-year-old outfits.

"The new blue and silver metallic creations are designed for contrast and appearance in the stadium," stated Roger S. Muzzy, assistant professor of music and band director.

"The silver sash and belt are used to give the best possible impression from the distance the uniforms are normally viewed."



BAND'S NEW LOOK—Majorette Claudene Moreland, a junior transfer student from Bakersfield junior college, demonstrates her baton twirling talents for drum major Mike Kambeitz. Miss Moreland is part of the new look of the San Jose State marching band this fall. In addition, director Roger Muzzy's musical aggregation will perform in new navy blue and silver metallic uniforms.

"The school colors, gold and white, lacked the contrast that was needed in the new uniforms. We selected navy blue as a substitute color, which is the same as the football jerseys. The silver metallic is a special material for TV and night performances because of its glitter," Professor Muzzy said.

The navy blue jackets are West Point style with one tail set off by the silver spun-metal sash and belt. The tapered ski pants are set off by a 3-inch stripe. The 20-inch-high shako, a fur hat with plume, will be worn by each member of the band.

These uniforms will be seen by the nation on TV during the halftime show at the Oakland Raiders game Nov. 13.

### DELAY EXPLAINED

What delayed the uniforms' delivery was the new metal cloth. "This was the first time that the new cloth had been used as a belt and sash," said the director, "and when the manufacturer sewed the metallic cloth with their wet process the backing shrank, making resewing necessary."

When asked about traveling now that the band had its new uniforms, Muzzy said, "We'd have liked to have gone to Oregon with the team, but our small budget doesn't allow us to travel farther than COP and Stanford."

### MAJORETTE ADDED

Another new look for the band is majorette Claudene Moreland, 20-year-old junior transfer from Bakersfield junior college. Claudene has developed a new routine for SJS that is built on showmanship and flash. "I use lots of throws and difficult things to please the audience," said Claudene, who will be spotlighted at the halftime show for the Raider's game.

The 5-foot, 3-inch majorette worked with the Bakersfield band for two years, performing in the Junior College Rose Bowl last year.

## Health Insurance Fees Due Today

Health insurance fees are due today by 5 p.m., William M. Felse, student affairs business manager states.

The \$10 fee must be turned in to TH16 before that time. Felse cautioned. In addition, students not yet registered for the plan may do so until the 5 p.m. deadline.

The volunteer student plan offers outpatient benefits, x-ray and lab facilities, hospital care, surgical benefits, and physicians' visits.

The plan was drawn up through the efforts of the Santa Clara County Medical society, the College Health service, and Physicians' Service—Blue Shield.

## CHRISTIAN CENTER PLANS SEMINARS

A series of 10-week seminars will begin Sunday evening at 7:30 with a lecture in the Christian center on "The Dilemma of Christianity," according to Rev. Don Emmel, Presbyterian campus pastor for the United Campus Christian Ministry.

The lecture Sunday, by Mr. Emmel, will be part of a seminar on "Studies in Contemporary Theology," which will also be presented at 10:30 a.m. on Thursdays.

Other seminars taught by Mr. Emmel include: "Rediscovering the Bible," on Wednesdays at 10:30 a.m. and Thursdays at 3:30 p.m. each week; and "Christianity and Contemporary Issues," Tuesdays each week at 3:30 p.m.

Dr. Robert Larsen, associate professor of philosophy, will teach a fourth seminar weekly about "Soren Kierkegaard, Thursdays at 2:30 p.m."

Each class will meet in the library room of the Christian center, 300 S. 10th st. The classes are 50 minutes.

## Friday Flick Shows Ingrid Bergman Film

Friday Flicks tonight will present "Inn of the Sixth Happiness," starring Ingrid Bergman.

Showtime will be 7:30 p.m. in Morris Dailey auditorium.

"Inn of the Sixth Happiness," is a dramatic story about a missionary and her duties in desolate Chinese lands. Music listeners might remember a popular song "Knock Knock, Paddy Whack," which came from this screenplay.

The movie, sponsored by the senior class, cost 25 cents for both students and public.

## Nixon-Kennedy Debate On TV in Tower Hall

The two student political organizations, the Young Democrats and Republicans, have combined their efforts to bring the current political campaign within easy reach of SJS students. The first result of these efforts is an arrangement to have tonight's Nixon-Kennedy debate televised on campus.

According to Brent Davis of the Young Republicans and Bob Crittenden of the Young Democrats, four television sets will be installed in room 55 of the Tower Building and will be available to interested students. Approximately 300 students will be able to view this second of a series of debates between the two presidential candidates which will begin at 7:30.

In addition to having the debates televised on campus, the two student groups have extended invitations to the two candidates to appear on campus in person as part of their campaign tours.

Letters were sent each of the candidates by Vice President William Dusek on behalf of the student political groups, but as yet there have been no replies.

Vice President Nixon made one appearance on the SJS campus during the 1956 campaign and Gov. Frank Clement of Tennessee visited the campus on behalf of the Democratic candidate Adlai Stevenson.

It is expected that if the candidates themselves cannot visit SJS they may send personal representatives to speak on their behalf. Robert Kennedy, Senator Kennedy's younger brother, and Governor Nelson Rockefeller have been mentioned as possible alternate speakers for the two candidates.

## Sociology Society Names Officers

Alpha Kappa Delta, national honorary society in sociology, elected officers in a meeting yesterday. Dr. James E. Blackwell, assistant professor of sociology, and the group's advisor reported.

They are Eleanor Blossom Krail, president; Robert Whitall, vice president; Natalie Whalan, secretary-treasurer; and Irene Kreile, program chairman.

Miss Krail is a senior. The other officers are graduate students.

All students are eligible to join AKD, provided they have a 3.0 overall grade point average, and a 3.0 GPA in at least 12 units of sociology.

Dr. Blackwell said AKD expected to have one speaker a month as part of the regular program. Among prominent persons mentioned was Dr. Albert Elias, director of Highfields Delinquency center in New Jersey.

About 15 students are expected to be initiated next month, Dr. Blackwell said.

## Students Attend National Merger

Three SJS students attended a meeting recently that completed a national merger of five campus Protestant groups, reported the Rev. Don Emmel, Presbyterian campus pastor for the United Campus Christian Ministry.

The meeting, at Stephens college in Columbia, Mo., merged Presbyterian, Congregational, Christian (Disciples), Evangelical and United Brethren campus denominations into one group called the United Campus Christian Fellowship.

### ASCE Meets Tonight

Robert Wilhelm, civil engineer and attorney, will speak on "The Construction Division of the American Society of Civil Engineers" at the society's first meeting tonight at 8 p.m. in E118.



# Daily Comment

## Editorial

### Seventh Street Mall May Lower Conjestion

Skyrocketing enrollment and the resulting surge of construction projects at the largest and most vigorous of state colleges, San Jose State, is bringing an old proposal into better light.

"Block off Seventh st. through the campus area and create a mall," enlightened people have said. They were thinking of an immediate and positive way to thwart the congestion resulting from the bulging-at-the-seams growth of San Jose State.

Admittedly, SJS does not have a campus to compare with the likes of Stanford and the University of California, but does that mean we can't do the best with what we have?

The conversion of traffic-jammed Seventh st. from a congested eyesore into an attractive and practical mall should be more seriously considered by city officials.

There are positive improvements to consider in the proposed street to mall conversion:

1) Campus areas east and west of Seventh st. would be tied together. At present, the harassing stream of traffic up and down Seventh splits the campus area.

2) An improved educative atmosphere would be the result of squelching the hubbub of Seventh st. and installing a spacious and restful mall. At present SJS looks like a big traffic jam rather than a college.

3) Students and faculty alike wouldn't have to risk life and limb in crossing Seventh st. A student could walk from the library to the Art building knowing he wouldn't have to fight traffic during the trip.

Does the abandonment of a thoroughfare through SJS in favor of a real campus atmosphere appall anyone? —F.W.

## Spartaguide

### TODAY

American Society of Civil Engineers student chapter, meeting, E118, 8 p.m.

California Teachers Assn., meeting, barbecue pits, women's gym, 6:30 p.m.

International Relations Club, meeting, CH229, 3 p.m.

International Students Organization, meeting, WG22, 8 p.m.

### SATURDAY

Spanish Club, meeting, barbecue pits, women's gym, 4 p.m.

### SUNDAY

Hawaiian Club, meeting, 152 East Reed, 12:30 p.m.

## Church Slate

### CANTERBURY ASSOCIATION

Christian Center  
300 SOUTH 10TH  
Holy Communion at 7:15 a.m.  
Every Thursday  
Study Groups as Announced  
C. Elizabeth Campbell



### Episcopal Church

Services at Trinity, 81 N. 2nd  
8:00 a.m. Holy Communion  
9:25 and 11:00 a.m.  
Morning Prayer  
W. B. Murdock, Rector

### 'Take A Car'

to  
WESTMINSTER  
PRESBYTERIAN  
CHURCH

for  
PERSPECTIVE 9:40 a.m.  
WORSHIP 11:00 a.m.

A service to students. A service for students by students. Cars stop at 7th and San Fernando and 7th and San Carlos at 9:30 a.m. No charge. Other stops as requested (CY 4-7447).

### HE'S VERSATILE

HOLLYWOOD (UPI) — Versatile Gus Edson, creator of the "Dondi" comic strip, wrote the screenplay and was associate producer of the film "Dondi," an ad also wrote lyrics for a song Patti Page sings in the picture.

### EXPLORER STORY

HOLLYWOOD (UPI) — "Ten Who Dared," the exciting tale of the first explorers to descend the treacherous, uncharted Colorado river in 1869, is being filmed by Walt Disney in the natural settings of the Grand canyon.

### Stop and Shop — Spartan Advertisers

#### St. Thomas Chapel

FOR COLLEGE STUDENTS

Worship Services

Sunday—10:00 a.m.

at  
CHRISTIAN CENTER

306 S. 10th at San Carlos

NATIONAL LUTHERAN COUNCIL

### WESTMINSTER

PRESBYTERIAN  
CHURCH

The Alameda at Shasta  
CY 4-7447

#### Sunday Services

8:30 & 11 a.m.  
7:00 p.m.

JOHN KNOX  
FELLOWSHIP  
(tailored for students)

9:40 a.m. Perspective

Current study:  
"Campus Conquest"

6:00 p.m. Knox Club  
Symposium  
"Does God Exist?"

G. Winfield Blout, Minister  
Charles Tyler, Minister  
to Students

### Wesley Foundation

The Methodist Student Center in San Jose  
205 EAST SANTA CLARA AT 5th—CY 2-3707

#### THIS SUNDAY

6:00 P.M. Din-a-mite — 40c  
7:00 P.M. "Problems in Living Together"  
Panel: Mrs. Forrest Tittle, Rev. Allan Dieter, Kurt Hanson

#### THIS THURSDAY

12:30-1:30 . . . Midweek Luncheon

## 'Elmer Gantry' Film Called 'Well-Timed' —Explodes With Lancaster Touch

By ED RAPOPORT  
Feature Editor

Writer-director Richard Brooks took some chunks of material out of Sinclair Lewis' controversial novel about 1920 revivalism, combined them and came up with a success that shocks, but doesn't injure.

"Elmer Gantry," released by United Artists, is well timed, moving quickly over its 2½-hour period.

Most of the spontaneity of the film comes from Burt Lancaster, whose portrayal of Gantry may even be worth an academy award.

Lancaster, the vibrant actor that he is, makes the fictitious Gantry look almost believable as he shouts, sings, and spits out that old time religion.

But Gantry can't save all the sinners—not even himself. The self-styled preacher had his mind set on women as he had an spreading "the Gospel." He was out to do the best he could with both.

Jean Simmons plays the part of Sister Sharon Falconer, the one whom Gantry said he would die for. Miss Simmons is almost angelic in her portrayal of an evangelist with an earnest, sincere approach. But she also is a little too wooden.

Gantry is tied between her and Lulu (Shirley Jones), who appeals to the more human desires of the self-promoting Baptist minister.

Lewis' story takes place during the era of the muckrakers and sure enough the Midwestern newspapers make hay while the sun shines. Notably good is Arthur Kennedy as the cynical but understanding newsman.

Patti Page appears occasionally and sings up a storm for the Lord as do all the people working for Sister Falconer's revivalist group.

Gantry appeals to the people with the fire-and-brimstone technique, but Sister Sharon appeals to the people's hearts—and you can bet they are both successful.

But disagreements don't always leave pleasant memories—and neither do old girl friends like Lulu. Especially if that girl friend is too alluring to ignore.

Andre Previn provides the rousing musical background and Eastman arrays his colors in rich tones.

It's worth seeing.

## Spartan Daily

Entered as second class matter April 24, 1934, at San Jose, California under the act of March 2, 1879. Member California Newspaper Publishers Assn. Published daily by Associated Students of San Jose State College, except Saturday and Sunday, during college year. Subscription rates \$4 per year.

EDITOR: RON BATES  
BUSINESS MGR.: LYNN LUCCHETTI  
News Editor: Jim Ragsdale  
Day Editor: Pete Kuehl  
Sports Editor: Nick Peters  
Assistant Sports Editor: Gary Palmer  
Photo Editor: Jim Brock  
Copy Editor: Jim Jansen  
Fine Arts Editor: Deanne Boomer  
Feature Editor: Ed Rapoport  
Wire Editor: L. Worthington  
Society Editor: Ellen Shulte  
Office Manager: Mike Sanders  
Public Relations Director: Peter Benavidez  
Reporters: Richard Dyer, Richard Freeland, Wilford Keener, Peter Kuehl, Charlotte O'Bannon, Daniel Petersen, Todd Phipps, Marshall Rezos, Pete Shaw, Robert Shepard, Jay Thorwaldson, Richard Tjaden, Carl Walston.  
Advertising Staff: Patti McLean, Dick Schröder, Bob Schock, Phil May, Bill Masingale, Jeff Veitch, Bob Clark, Steve Albright, Bob Pierce, Shirley Parks, Mike Fujikake.

## Highlights

By Dee Boomer  
Fine Arts Editor

### S.H. HIGHLIGHTS

"Once Upon a Mattress," the original written by Hans Christian Anderson and called "The Princess and the Pea," will play until Oct. 22 at the Geary theater in San Francisco. The sensitive princess is played by Dody Goodman and Buster Keaton is the sad-faced king.

Alban Berg's atonal opera "Wozzeck" will be performed by the San Francisco opera company Saturday night. The performance Tuesday night was the first time the San Francisco company has presented "Wozzeck."

On the lighter side, Duke Ellington is at the Neve, a brand new club, for a limited engagement. The Neve is located at 960 Bush.

The San Francisco Light Opera co. is performing "Showboat" at the Curran theater. The Kern and Hammerstein II musical stars Joe E. Brown, Eddie Foy Jr. and Julie Wilson.

"State of the Union," a play about U.S. presidential politics, will open the San Francisco state college drama season Oct. 14. The performance, in the Little theater, will play Oct. 14, 15 and 18-22.

Flamenco dancer La Mariquita will appear at the Loft theater Oct. 14, 21 and 28. She will be accompanied by guitarist and singer Jose Calarrudo and pianist Antonia Menaglia. The Loft theater, Emerson at Hamilton, Palo Alto, will be set up in a Spanish cabaret style for the occasion.

Also at the Loft theater, the Comedia Repertory company will present "The Scarecrow," a tragic-comedy, Monday at 8 p.m. (free admission) and "Damn Yankees" on Oct. 15 at 8:30 p.m.

Pianist William Armstrong will

play Sunday at the de Saisset gallery on the University of Santa Clara campus at 3 p.m. He will play works of Bach, Beethoven, Bartok, Debussy and Chopin.

In Monterey, the Wharf theater is showing "The Rainmaker" Friday and Saturday nights at 8:30 and a matinee Saturday at 2:30 p.m.

"Salute to Rogers and Hammerstein" will play tonight and tomorrow night at Civic auditorium at 8:15 p.m.

### Hillel Schedules Group Discussion

"Jewish Tradition and the College Student" will be the subject of an open group discussion by the B'nai B'rith Hillel foundation at their regular Monday night meeting.

The meeting will be at Newman Hall, 79 S. 5th st., at 8 p.m.

The results of a previous inter-Hillel board meeting at which a ski trip was discussed also will be reported.

## Bakmas

Flower Shop  
• Corsages  
• Bouquets  
CY 2-0462 10th & Santa Clara

## LARKS

HOME OF THE  
HAPPY HOT DOG

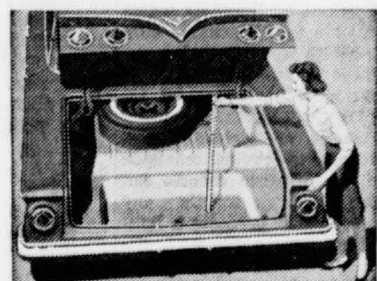
181 E. SANTA CLARA ST.

# FRIDAY! THE GREATEST SIXTY-ONEDERFUL CHEVROLET

Here's the car that reads you loud and clear—the new-size, you-size '61 Chevrolet. We started out by trimming the outside size a bit (to give you extra inches of clearance for parking and maneuvering) but inside we left you a full measure of Chevy comfort. Door openings are as much as 6 inches wider to give feet, knees, and elbows the undisputed right of way. And the new easy-chair seats are as much as 14% higher—just right for seeing, just right for sitting.

Once you've settled inside you'll have high and wide praises for Chevrolet's spacious new dimensions (in the Sport Coupes, for example, head room has been upped as much as 2 inches, and there's more leg room, too—front and rear). Chevy's new trunk is something else that will please you hugely—what with its deep-well shape and bumper-level loading it holds things you've never been able to get in a trunk before.

Yet, generously endowed as this car is with spaciousness and clean-etched elegance, it holds steadfastly to all the thrifty, dependable virtues Chevrolet buyers have come to take for granted. Your dealer's the man to see for all the details.



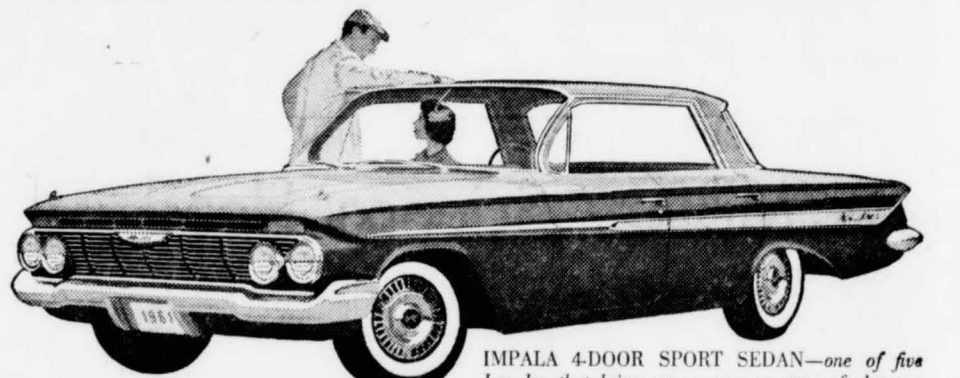
There's never been a trunk like it before! The floor's recessed more than half a foot and the loading height is as much as 10½ inches lower.

\*\*\*\*\*

## INTRODUCING THE '61 CHEVY BISCAYNE 6

the lowest priced full-sized Chevy with big-car comfort at small-car prices!

Chevy's new '61 Biscaynes—6 or V8—give you a full measure of Chevrolet quality, roominess and proved performance—yet they're priced down with many cars that give you a lot less! Now you can have economy and comfort, too!



IMPALA 4-DOOR SPORT SEDAN—one of five Impalas that bring you a new measure of elegance from the most elegant Chevis of all.



NOMAD 9-PASSENGER STATION WAGON. You have a choice of six Chevrolet wagons, each with a cave-sized cargo opening nearly 5 feet across.



BEL AIR 2-DOOR SEDAN, like all '61 Chevrolets, brings you Body by Fisher newness—more front seat leg room.



Biscayne 4-Door Sedan

See the new Chevrolet cars, Chevy Corvairs and the new Corvette at your local authorized Chevrolet dealer's



# Rushing Ends; Sororities Select Pledge Class of 343

Sororities completed rush week by signing up 343 girls into Panhellenic ranks. Sigma Kappa and Gamma Kappa and Gamma Phi Beta lead in sorority pledging with 38 each.

## ALPHA CHI OMEGA

Maureen J. Allen, Margaret Susan Baer, Joyce Ann Bevy, Reo Jane Blake, Barbara Lee Clark, Mary Cotton, Rita Lee Crawford, Joan Renee DeVore, Patricia E. Dougan, Dianna Dumesnil, Ruby Darrington, Joan Elwood, Kathryn N. Fox, Martha Giannini, Barbara Hurd, Sue Jordan, Barbara Ann Lazo, Judith Evelyn Lehman, Valerie Marshall, Linda Lee Maxwell, Ann W. Mayfield, Margaret Miller, Judith Gail Penniman, Bonny Grant Perry, Karen Pezzaglia, Susan Lee Pratt, Karen Lee Raitt, Patricia Lee Rose, Jerilynne Rothschild, Ruth Shermund, Lana Sisley, Phyllis Helene Smith, Elizabeth Ann Tyler, Carol Whitnell, Nancy Jo Wilson, Sherrill Lee Wood.

## ALPHA OMICRON PI

Carolyn Allen, Donna Adrian Bell, Karen Palmer Betz, Kay T. Blackburn, Lorraine Brennan, Aileen Cabral, Linda Jane Collins, Sue Lynn Goodrich, Linda Sally Haugh, Julie E. Hoadley, Judy Hochfield, Claire Jacobs, Arleen Louise Langley, Susan Elizabeth

Maas, Diane Madsen, Stephanie Melin, Sandra Munday, Carolyn Schriker, Pamela Sue Sparrow, Patricia J. Spence, Sandra Lee Stephens, Karen A. Warnick.

## ALPHA PHI

Susan Adelman, Judy A. Bartlett, Barbara W. Bowman, Sandra Buerman, Susan Joan Burr, Marilyn Butcher, Karen Cauhape, Mar- dis Compton, Janice Connor, Bonnie Jean Crockett, Maureen E. Devlin, Sandra Lee George, Carolyn D. Hardy, Judith M. Harris, Holly Hill, Deana Hollimon, Valerie Dee Johnson, Margaret C. Kimball, Marcia Lynn McFarren, Julianne C. McLellen, Berit Mathisen, Diane Louise Miller, Susan Shepherd, Carol Shier, Virginia Snyder, Patricia Speetzen, Melinda Stevens, Colleen Sullivan, Penny Sue Thorns, Allison Tree.

## CHI OMEGA

Avon Amestoy, Leslie Ann Ballard, Carol Bloss, Sue Bromley, Patricia Ann Butler, Karen Cooper, Catherine D. D'Orsa, Nor- lyn Elerman, Danna Ellertson, Carolyn R. Ellington, Joan C. Erickson, Nancy Sue Farr, Warren Louise Firenzi, Nancy Hall, Beverly Homen, Jane Lee Johnson, Deann Kinnear, Esther Annis Kley, Carol Kunz, Bernice Mangseth, Mary Kathleen Maples, Karen Jean Metheny, Dorothy Ann Morris, Carole Pallitto, Nancy Lee Pond, Margaret Lois Purcell,

## Spartan Society

Ellen Shulte, Society Editor

Karen Shippey, Linda Shively, Shirley Sorensen, Carol J. Thomas, Patricia Anne Travis, Susan Trefethen, Catherine Louise Tuxford, Kathleen Westlund.

## DELTA GAMMA

Kristen L. Andersen, Sandra Jo Butler, Jayne Chambers, Nancy Lynn Childs, Claudia Ann Coughlin, Christine Farrow, Pamela Gaynor, Renee Giglio, Christine Gray, Judy Grevstad, Norma Mary Harwood, Raylene Hermann, Patricia A. Houston, Virginia L. Irving, Susan Johnson, Judith Carol Kropke, Beatrice Ann Merrill, Patricia Jaime Morris, Jean Mary Mullen, Mary Susan Nelson, Nancie Niederholzer, Nancy Peterson, Barbara Piazza, Susan Pool, Barbara Joan Quinn, Sharon Reed, Linda Mary Ross, Sharon Ann Shollin, Shirley Jane Spencer, Joan Emily Spooner, E. Ann Thomas, Vicky Vogel, Kathy Ann Walker, Linda Weitzel, Julie Ann Wilson, Jane Winfield, Sharon Woodruff.

## DELTA ZETA

Shirley Barksdale, Lynn H. Brown, Mary Callahan, Carol Caffin, Patricia Fairhurst, Elizabeth Ann Heaney, Karen Elizabeth Kaiser, Mariana Latham, Christie Lubken, Marcella Laigne McComas, Judith Maestre, JoAnne Misner, Connie Anne Newlin, Cherie Phinney, Gail Rattray, Sandra June Robinson, Cathy Runnels, Patricia Scannell, Deborah

Silvernail, Linda Sue Sonner, Launa Soske, Carol Wessling, Christine Whitehead, Sandie Whitehead, Constance E. Wyant.

## GAMMA PHI BETA

Michele Shelly Ashby, Kathleen Jean Austin, Sharon Ballengee, Joan Bohnett, Betty Louise Bowman, Kerin Adair Burns, Mary L. Casady, Nancy Choccol, Marilyn Cook, Carolyn Cox, Anne L. Davis, Kathleen Davis, Joan L. Dougery, Colleen Garcelon, Ann Gates, Rebecca Harris, Norma Huskey, Janet Leach, Yvonne Lemmon, Carol Elaine Lentine, Barbara A. Lindner, Bonnie McAulay, Nancy McGrorey, Lynda Newman, Merri M. Olson, Mary Lou Osborn, Diane Pahl, Linda Pierce, Nancy Portal, Wendy Renwick, Judi L. Silveria, Joan Simpkins, Pam Stoddard, Lori Strom, Carolyn Truex, Synnove Ware, Suzanne Westlund, Karen Wells.

## KAPPA ALPHA THETA

Joyce Anthony, Betty Babcock, Pamela Beaumont, Margaret Cumming, Molly Darragh, Shirley Duffey, Kathleen Duque, Charles Mary Hagerty, Nancy B. Hoel, Susan L. Jenkins, Della J. Kahn, Arleen King, Janet Koch, Mary Joanne Lacey, Nancy Larsen, D. Marcia Laughlin, Jeanne Longi- notti, Valerie Sue Lowen, Elaine Manley, Virginia Noonan, Judi Osborne, Lisa Phelan, Janet B. Pike, Cynthia Rutherford, Bar-

bara L. Schuler, Barbara Scurich, Sharon E. Seely, Linda Shields, Linda Strand, Kathy Van Leeuwen, Lynn Walker, Sharon Worledge.

## KAPPA DELTA

Judith D. Andrews, Sue Ellen Bertotti, Adrienne Hall, Patricia M. Locke, Carol Ann Sheel, Barbara Ann Simpson, JoAnne Stewart, Pamela Thomas, Karen Watson, Anne Wright Wilson.

## KAPPA KAPPA GAMMA

Lynn Berglund, Katherin Elaine Brinker, Denise M. Cailleau, Bonnie Coleman, Ann Davies, Diane Deason, Linda Elias, Patricia Ann Flink, Trudi Friend, Carol Furman, Sonja Halvorsen, Sharon Hatlett, Carol Hilgeman, Patricia Johnson, Carlyn Kinnison, Kay Kirker, Carol LaBoube, Julie LaGrange, Susan Kay Libby, Janice Livacich, Lynne McCall, Mary MacMahon, Marilyn Medland, Susan Norris, Sandra K. Pace, Marilou Pasquinelli, Pam Purpus, Pamela Reed, Joanne E. Risdon, Kathy Robinson, Mary Ann Rock, Priscilla Sorauf, Glenda Sweezy, Susan Trimm, Jeanie Tostenon, Sydney Wood.

## PHI MU

Lois Sharon Gersten, Beth Hopper, Loretta Jean Roach, Sally Sturges.

## SIGMA KAPPA

Julie Ann Bartlett, Donna Jean Bell, Sue Bishop, Sharon Boswell, Barbara Buchser, Linda Burkinshaw, Karen Lee Cantor, Claudia Cook, Judith L. Day, Carol Elisovich, Sheila Erikson, Joan Eubel, Christine Ferranti, Mary Flynn, Julie Ann Forchini, E. Magalene

Garland, Candace Giusto, Sheila Louise Howe, Linda Irby, Susan Lynne James, Daulton D. Kohler, Lee Levinger, Nancy McFarren, Jean McKay, Lynn Meadows, Jan Michell, Theresa Milam, Bonnie

Miner, Charlene Minor, Sue Montgomery, Aline O'Brien, Judy Poole, Lynn Richardson, Gail Wieman, Jo Ann Woodard, Pat Yogerst, Carolyn Younger, Natalie Zavialoff.

## Summer Brings Marriage Bells for Nine Coeds

Chi Omega Barbara B. Johnson, music major from Chicago, Ill., to Tom Hooks. The couple now are residing in San Jose.

Bev Jung, Chi Omega general education major from San Jose, to Al Walburg, Sigma Chi from San Jose. Walnut Creek is now their home town.

Chris Lange, Chi Omega general education major from Sacramento, to Jerry Warren from Sacramento state college.

Marilyn Selva, senior kindergarten-primary major from San Jose, to Jim Graham, senior pre-medical major from Campbell.

Chi Omega Barbara Koepff, general education major from Los Altos, to Mike Jones, P.E. major from Los Altos.

Claire South, Chi Omega nursing major from Santa Clara, to John Casey, graduate from Santa Clara university.

Mattie Lane, now employed by

Monsanto Chemical co. in Santa Clara, to William Richard Marguey, criminology major.

Elaine Perry, Chi Omega general education graduate from Pacific Palisades, to Bill Revel, Sigma Alpha Epsilon business graduate of UCLA.

Chi Omega Ruth Ronco, home economics major from Santa Clara, to Bill McQuire, engineering graduate from Santa Clara university.

## ENGAGEMENTS

1-25—Betty Sue Bobbitt, Chi Omega secondary social science major, to Richard E. Greenlaw, assistant manager of Sears Roebuck & Co., Redondo Beach.

## PINNINGS

1-25—Betty McKenle, Chi Omega general education graduate from Glendale, to Dan Plumby, Sigma Alpha Epsilon business major from Burbank.

For wearing apparel, gifts, decors and other Hawaiian needs  
VISIT  
**THE HAWAIIAN SHOP** (Montgomery Hotel Bldg.)  
CY 5-7066 — W. San Antonio St. — San Jose  
Open 10:00 - 5:30 Daily Thurs. 'Til 9:00 P.M.

## SHOW ON WORTH! CHEVROLET

### NEW '61 CHEVY CORVAIR

More space . . .  
more spunk  
and wagons, too!



The newest car in America: the CORVAIR 700 LAKE-WOOD 4-DOOR STATION WAGON.



CORVAIR 700 CLUB COUPE. Like all coupes and sedans, it has a longer range fuel tank.



CORVAIR 700 4-DOOR SEDAN. Provisions for heating ducts are built right into its body by Fisher.



Here's the new Chevy Corvair for '61 with a complete line of complete thrift cars.

To start with, every Corvair has a budget-pleasing price tag. And Corvair goes on from there to save you even more. With extra miles per gallon . . . quicker-than-ever cold-start warmup so you start saving sooner . . . a new extra-cost optional heater that warms everyone evenly. Riding along with this extra economy: more room inside for you, more room up front for your luggage (sedans and coupes have almost 12% more usable trunk space).

And our new wagons? You'll love them—think they're the greatest thing for families since houses. The Lakewood Station Wagon does a man-sized job with cargo, up to 68 cubic feet of it. The Greenbrier Sports Wagon you're going to have to see—it gives you up to 175.5 cubic feet of space for you and your things.

Corvair's whole thrifty lineup gets its pep from a spunkier 145-cu.-in. air-cooled rear engine. Same rear-engine traction, same smooth 4-wheel independent-suspension ride. See the polished and refined 1961 Corvair first chance you get at your Chevrolet dealer's.



Spare tire is in the rear in coupes and sedans—leaving more luggage space up front.



Even middle-seat passengers sit pretty, thanks to Corvair's practically flat floor.

Now in production—the GREENBRIER SPORTS WAGON with up to twice as much room as ordinary wagons (third seat optional at extra cost).



Finally, let us take up the most important topic of all. I refer, of course, to dating.

As we have seen, the way you dress reflects on your sorority, but the men you date reflect even more. Be absolutely certain that your date is an acceptable fellow. Don't beat about the bush; ask him point-blank, "Are you an acceptable fellow?" Unless he replies, "Yeah, hey," send him packing.

But don't just take his word that he is acceptable. Inspect him closely. Are his fingernails clean? Is his black leather jacket freshly oiled? Is his ukulele in tune? Does he carry public liability insurance? And, most significant of all, does he smoke Marlboros?

If he's a Marlboro man, you know he has taste and discernment, wit and wisdom, character and sapience, decency and warmth, presence and poise, talent and grit, filter and flavor, soft pack and flip-top box. You will be proud of him, your sorority will be proud of him, the makers of Marlboro will be proud of him, and I will be paid for this column.

The makers of Marlboro, having paid for this column, would like to mention another of their fine cigarettes—mild, unfiltered Philip Morris—available in regular size or the sensational new king-size Commander. Have a Commander—welcome aboard.

See the new Chevrolet cars, Chevy Corvairs and the new Corvette at your local authorized Chevrolet dealer's



# Gridders Head Northward

## Webfoot Whammy: State Winless Against Ducks

Beginning with a 26-13 setback in 1953, Spartan grid contingents have failed in four outings against Oregon University, scoring but 32 points as compared with the Ducks' 113.

Bob Bronzan, professor of physical education and a former Spartan mentor (1950-56), vividly recalls the opening competition in the SJS-Oregon rivalry.

"Prior to the game our first string fullback, a regular end, and three tacklers were declared ineligible because of a residence technicality," he confided.

"However," he continued, "we still managed to score first and led 6-0 after the first quarter. At that time we were thrown off stride when quarterback George Shaw (Giants) was switched to end and proceeded to beat us with key receptions."

In 1954 the Spartans went into the Oregon game sporting a 3-1 mark, but were thumped by 26 to 7.

This time Shaw, as the field general, poured it on the locals with halfback Dick James (Redskins) and fullback Jack Morris (Rams) supplying the punch.

Bob Titchenal's rookie season at SJS found Oregon winning 26-0 in a rain-filled game.

Last year, in the first Spartan Stadium battle between the schools, the Oregon backfield of Dave Grosz, Willie West, and Dave Grayson was too much for host SJS by a 35-12 count.

—PETERS

## Tomorrow's Skirmish Big Test of Spartan Strength

By GARY PALMER

An optimistic Spartan grid team, hoping to upset the favored Oregon Ducks in Eugene tomorrow, went through light drills yesterday afternoon, wrapping up a week of intensive preparation for the clash with Len Casanova's Webfoots.

Head Coach Bob Titchenal, his staff, and a 35-man squad wing northward from San Francisco International Airport at 11 a.m. today for a skirmish that should determine the true strength of the Spartan eleven.

### Last Chance

A 5 p.m. deadline has been set for the purchase of special discount rate student tickets for the Stanford-SJS football game of October 15, according to Jerry Vroom, athletic business manager.

The tickets may be purchased in the student affairs business office (TH16) for \$1.00.

Regular price for a general admission ducat is \$2.50.

Titchenal's charges will conduct light workouts in Eugene this afternoon and then call it quits until they take the field at kickoff time—1:30 p.m.

The game will be aired over radio station KEEN, 1370 on the dial, with Bob Blum mikeside.

Fullback Ken Taylor, who injured his leg in the BYU game, will be left at home and end Gene Badgley, who hurt his knee in Wednesday's scrimmage, may not make the trip. These are the only two casualties for the Spartans, who are otherwise physically fit.

Titchenal was displeased with Wednesday's workout, which he termed "poor." "We were far from sharp and there were no

### Duck Ends Out

EUGENE, Ore. (UPI)—Kent Peterson, starting right end for the Oregon Ducks, will be out of action for three weeks with a chipped ankle bone, it was announced yesterday.

Peterson, a junior letterman joins Paul Bauge, the regular left end, on the injury bench. Peterson will definitely miss tomorrow's contest with San Jose State.

Coach Len Casanova was left with four ends on the squad.

individual standouts," he commented.

The "poor" workout, however, left no cause for alarm as the Spartans were considered "ready" for the crucial with the Webfoots.

San Jose is considered several weeks behind the rest of the nation's grid teams, with only one tilt under its belt, while Oregon has three games in the book.

The Ducks steamrolled over Idaho's Vandals, 33-6 in the season opener, but underwent a calumny job at the hands of Michigan's Wolverines, 21-0. They returned to the win column last weekend, however, eking out a 20-17 victory over Utah. The Webfoots were forced to come from behind in the final six minutes against the Utes to turn a nip and tuck contest into their second win of the '60 campaign.

## SJS-Oregon Line-up

SAN JOSE STATE	POS.	OREGON
OSCAR DONAHUE	LE	LEN BURNETT
BILL McGRATH	LT	RILEY MATSON
CARL MITCHELL	LG	MIKE ROSE
HANK CHAMNESS	C	JOE CLESERI
DICK ERLER	RG	DAVE URELL
JOHN SUTRO	RT	STEVE BARNETT
JIM CADILE	RE	GREG WILLENER
MIKE JONES	QB	DAVE GROSZ
MAC BURTON	LH	DAVE GRAYSON
DOUG McCHESNEY	RH	CLEVELAND JONES
JOHN JOHNSON	FB	BRUCE SNYDER

### MELS PALM BOWL



Take a Bowling Break

The next time you go out for coffee, try a relaxing bowling break, too. Mels puts the fun into bowling. 40 lanes, restaurant and lounge. Mels is the place for a bowling date. Mels welcomes Co-rec and Intramural groups.

MELS PALM BOWL

1523 W. San Carlos St. CY 4-2810



Now get rid of those glasses and look completely natural again!

Return to your natural, good looking self, yet see naturally through the miracle of contact lenses.

See Joe Allen and Frank Jackson  
SPECIALISTS IN CORNEAL CONTACT LENSES

CONTACT LENS CENTER

213 So. First Street CY 7-5175

### Coaches:

## SJS Staff Energetic, Youthful

(This is the last in a series of eight articles on the San Jose State football team.)

An energetic, youthful coaching staff is the guiding light behind the San Jose State grid contingent that tackles a nine game schedule this fall.

The staff, headed by Bob Titchenal, includes backfield coach, Gene Menges; end coach, Harry Anderson; frosh coach, Bob Jones and Maj. William Quinlan, who assists the quartet.

Titchenal, who won All-American mention as a center on San Jose's undefeated 1939 team, started his coaching career as an assistant to his former San Jose State coach, Dud DeGroot, at West Virginia in 1948.

From there he went to New Mexico and then Denver in the capacity of assistant coach. After one season at Denver he returned to New Mexico as head coach and was named "Skyline Conference Coach of the Year" in 1953.

He returned to his alma mater in 1957 to take up the reigns where Bob Bronzan left off and guided the Spartans through a rugged schedule — finishing with a 3-7 ledger. The following year San Jose neared the .500 mark under "Titch" and last year, again tackling a rugged slate, posted a 4-6 mark.

Menges, the backfield tutor, is another alumnus of San Jose. After an illustrious playing career at quarterback and a year of assistant coaching Menges joined the Spartan staff in 1952.

His passing feats were second to none at State and he still holds many of the SJS aerial records.

The 1960 season marks Anderson's second year on the coaching staff and his first as a varsity assistant. Last year Anderson handled the frosh team and moved up to the varsity post when Marty Feldman resigned to join the Oakland Raiders.

A halfback at USC in the late '40s, Anderson spent seven successful years as coach and athletic director at San Diego's Mission Bay high school.

Bob Jones, the frosh coach is in his first year at San Jose after starring on the gridiron for Cal in his college days. Coaching at Cumberly high, Jones compiled the enviable record of 29 wins, six losses and a tie.

In 1957 he was hailed as "Coach of the Year" on the Peninsula. Maj. Quinlan, whose primary function is with the ROTC program at San Jose, takes time out from his duties to tutor the "red-shirts." He played his football under Bowden Wyatt while at the University of Wyoming.

—PALMER



'BIG FIVE'—SJS coaching staff (l. to r.) head coach Bob Titchenal, Bob Jones, Maj. William Quinlan, Harry Anderson, and Gene Menges.

Get The BIGGEST DOG in the West

## THE HOT DOG HOUSE

Special Tuna Buns Friday

Opposite the Science Building

Between Third and Fourth Streets on San Antonio

## \*The Masque

Presenting, Friday and Saturday Nights Until 4 A.M.

## THE WEST COASTERS

(Jam Session — Sunday 'til Midnight)

Expresso

Paintings by Miller McDaniel

10TH & SAN CARLOS

\*Minors welcome too!

## Old World Charm in Dining

America's Most Beautiful Hofbrau

- Authentic Bavarian Food
- Music Every Night

Deacon Shimmin  
Dixie Piano  
Sun., Tues., & Wed.  
Red Watson  
Deacon Shimmin  
Mon. & Thurs. Nites



Die Rhinelander  
Band  
Fri. & Sat. Nites

Garden City Hofbrau

51 So. Market • CY 7-2002

FREE

FREE

FREE QUART OF MILK  
OFFER ENDS OCT. 31

## NEW YORK STEAK \$1.49

Includes:

Garlic Bread, Chili,  
Salad and Baked Potato

ALSO . . .

EVERY SUN., MON., TUES.

## TOP SIRLOIN STEAK \$1.13

Students Must Show ASB Card

## Julian <sup>(For)</sup> iv Steaks

Fourth and Julian — Next to Burger Bar

the south has come west to . . .

## The Old Southern Barbecue Pit

### ORDERS TO TAKE OUT

Bar-B-Q Chicken  
Bar-B-Q Spare Ribs  
Bar-B-Q Beef  
Southern Fried Chicken  
Home-Made Pies

All Dinners \$1.60  
Special Lunch \$1.00

Open Monday - Thursday 11 a.m.-12:30 a.m.  
Friday - Saturday 11 a.m.- 3:00 a.m.  
Sunday 10 a.m.-10:00 p.m.

Ask for FREE Theater Ticket

## The Old Southern Barbecue Pit

428 E. SANTA CLARA

CY 7-9698



# Frosh Drop Opener, 14-7

## Jones Not Discouraged

"I was disappointed, but not discouraged," stated an optimistic Bob Jones from the dressing room after his Spartan frosh dropped a 14-7 decision to the San Francisco State JV's in his first game as an SJS mentor.

"This was more or less a personnel test," he continued. "Now I'll have a better idea of what the boys can do in preparation for our big one against the Stanford Papooses next week."

"One thing's for sure," he stressed, "our line play has got to be greatly improved or else Stanford will dump us by four touchdowns."

The game was an ideal example of what a large group of young ball players do in their first game after never having played together as a unit before.

To be perfectly fair, it must be said that the Gators were a far more experienced outfit, having won three previous games—one a 6-0 squeaker over a tough Stockton JC eleven.

Also, a large number of the Gators were juniors and seniors, who failed to make the talented SFS varsity.

Gator coach Bob Rodrigo praised the locals as "a very fast team which should really improve" and "by far the best

## Last-Minute Spartababe TD Drive Hits Brick Wall at Gator Goal-Line

By PETE SHAW

San Jose State's frosh gridders came within inches of at least tying the vaunted S.F. State JV's



BOB JONES . . .

. . . rookie mentor

team we've faced this season." Jones concentrated his individual praise on end Del Olson, who started the season as a quarter-

back; field general Walter Roberts, and halfback Dan Hager.

He also opined that the Spartababes would have done a lot better if "QB Dave Johnson hadn't missed the game because of strep throat."—PETERS

yesterday in their season opener at Spartan Stadium, but the Spartababes' last-minute scoring drive failed, making S.F. State a 14-7 victor in the sun-drenched contest.

Bob Jones' freshman charges became the first team to score against the Gator JV's this season when Walt Roberts hit John Seronello with a 5-yard touchdown pass midway through the second quarter.

Halfback Tom Cousey had scampered 45 yards around left end to the S.F. three to set up the score.

Sonny Spellman converted out of Roberts' hold to make it 7-7 with 9:26 left in the period.

S.F. State hit paydirt at the start of the second period when halfback Tom Manney charged seven yards through the right side of the SJS defense for the touchdown.

Isaiah Simpson kicked the extra point to put the Gators in front, 7-0.

An exchange of punts midway through the fourth quarter put the frosh on its own 45. A pair of 15-yard aerials from Roberts to halfback Del Olson, who also starred on defense, moved SJS to the Gator 25.

A personal foul against S.F. State gave the frosh a first down on the Gator 10, with three minutes left.

Roberts chugged around left end to the three and fullback Sonny Spellman carried to the one via the right guard spot.

The third and one situation resulted in a fumble at the line of scrimmage, but SJS center Steve Mumma fell on the ball at the two.

Fullback Brad Posey was stopped just short of the goal in a futile effort to get the needed two yards on fourth down, and S.F. took possession.

San Jose gained 143 yards rushing and 76 through the air. S. F. State compiled 198 yards on the ground and 74 yards passing.

Tour Shops as You Turn Spartan Pages

## Spartan Daily Grid Selections

TEAMS	BRONZAN	TITCHENAL	PALMER	PETERS	SHAW	CONSENSUS
Wash. St. @ California	UC (8-2) 21-16	UC (7-3) 17-14	UC (6-4) 27-20	UC (5-5) 14-13	UC (3-7) 16-14	UC by 4
Duke @ Michigan	Mich. 21-16	Mich. 21-7	Mich. 21-7	Duke 14-13	Mich. 21-13	Mich. by 8
Georgia @ USC	Georgia 22-7	USC 14-7	USC 14-8	USC 21-13	Georgia 19-14	EVEN
Ohio St. @ Illinois	Ohio 17-7	Illini 21-14	Illini 22-8	Ohio 31-13	Ohio 27-21	Ohio by 3
Iowa @ Mich. St.	Iowa 22-15	Mich. St. 24-20	Iowa 28-16	Iowa 21-20	Iowa 31-27	Iowa by 4
Oklahoma @ Texas	Texas 14-7	Texas 14-7	Okl. 14-7	Texas 14-13	Texas 14-13	Texas by 2
Purdue @ Wisconsin	Purdue 21-8	Purdue 20-7	Wisc. 23-16	Purdue 28-20	Purdue 21-14	Purdue by 7
Washington @ Stanford	Wash. 28-6	Wash. 34-21	Wash. 35-7	Wash. 35-28	Wash. 35-21	Wash. by 17
San Jose St. @ Oregon U.	XXXX	21-14	21-14	21-20	Oregon 28-14	SJS by 1
Raiders @ Dallas (AFL)	Dallas 31-17	Dallas 21-14	Dallas 24-17	Raiders 24-21	Raiders 24-21	Dallas by 4
'49ers @ Lions (NFL)	'49ers 31-20	'49ers 28-21	'49ers 31-17	'49ers 24-10	'49ers 23-21	'49ers by 10
Colts @ Packers (NFL)	Colts 24-13	Packers 35-28	Packers 20-17	Colts 31-24	Packers 31-17	Packers by 1

### TYPEWRITERS and ADDING MACHINES

**SOLD • RENTED • TRADED • REPAIRED**  
ALL MAKES      ALL MODELS

Standard • Portable

### ELECTRIC TYPEWRITERS

Portable and Manual

**SPECIAL STUDENT RATES      FREE DELIVERY**

### MODERN OFFICE MACHINES CO.

124 East San Fernando      (Next to California Book Store)  
Phone CY 3-5283      FREE PARKING

## Nick's Knacks

By NICK PETERS, Sports Editor

TAKING OFF FROM SAN FRANCISCO International at 11 a.m., San Jose State's grid contingent can claim a healthy squad with a profound desire to upset the appiecart on favored Oregon university tomorrow in Eugene.

Besides Ken Taylor, with a knee injury in the BYU game, and end Gene Badgley, who hurt same in practice this week, the Spartans are in sound physical condition for the Oregon battle. Only one more injury confronts the local aggregation as it wings northward—that to head coach Bob Titchenal.

It seems that Titch, who claims this is "the first time I've been hurt," pulled a leg muscle while swatting the shuttlecock in a badminton joust with a coaching counterpart.

Burly guard Pete Morgan, disputing the coach's claim to injury immunity, jokingly jostled Titch that this was only the beginning of things to come.

"When you get that old (Titch is 43), these things all happen at once," heckled Morgan. "Next week you'll be in a wheelchair!"

A laughing Titchenal hobbled from the room.

FLASHY MAC BURTON, the Spartans' all-purpose halfback, is an outstanding broad jumper in the spring.

Able to go over 24 feet, which is equivalent to eight yards, why couldn't Mac just take a handoff, step back, race to the scrimmage line, and leap?

This maneuver should be good for at least five yards a crack. No??

ROOKIE DEFENSIVE END Dan Colchico from SJS, again drew a starting assignment from '49er coach Red Hickey for Sunday's battle with the Detroit Lions.

Dan so pleased the redhead with his fine play in last week's game with the Rams that he could become a permanent fixture in '49er plans should he continue his fine brand of play.

According to the toughened rookie, "Ed Henke and Leo Nomellini have taught me the most on the '49ers—they're the greatest."

Speedy Ray Norton, another '49er rookie, will also accompany the team on its three-game road trip.

The ex-Spartan has yet to play in a game after two weeks of practice, but he's sure to see action soon, as he reportedly is on a four-week trial and the local pros still have to make one cut.

Rapid Ray feels "in great shape" and is eagerly awaiting his professional debut.

Veteran end Billy Wilson, another ex-Spartan, rates Colchico "a tough kid who should make it big if he continues to improve," but won't comment about Norton because of the sprint star's inactivity.

PROFESSORS BRONZAN AND TITCHENAL, the two grid "authorities" making predictions in the Spartan Daily (below), are one-two after their accomplishments of last weekend.

Despite differences of opinion in a few games, Bronzan (8-2) and Titch (7-3) lead the Daily sports staff in prognosticating.

Bronzan called the shot on Ohio State's 20-0 blank of USC and the guessers' consensus came out correct on two games.

The consensus had the '49ers over the Rams by four (S.F., 13-9) and Arizona State over Washington State university by 3 (ASU, 24-21) to hit the nail right on the head.

Friday, October 7, 1960

SPARTAN DAILY—5

## Seek Second Win

## Booters Meet Stanford In NCISC Lid-Lifter

San Jose State opens its Northern California Intercollegiate Soccer Conference season tomorrow, traveling to Palo Alto for a match with the redmen of Stanford at 11 a.m.

With a 5-1 practice win under their belt, the Spartans will be after the Indians' scalp, but will find the going tougher than they did against Santa Clara university.

Coach Julie Menendez will go with a semi-experienced lineup against the Tribe booters, with center halfback Joe Battaglini pacing the attack.

Switched from the center forward position, which he played last season, Battaglini was tabbed by Menendez as the sparkplug in the attack against the Broncos. Dietmar Demeter and Gordy Stroud, who played fine soccer against SCU, are expected to bolster the Spartan offensive, as are Jerry Koopman and Abdul Mashal.

Koopman and Mashal both tallied a pair of goals in the Bronco clash. At goalie the Spartan mentor has Gordon Huntze. Huntze was out at the tail end of last season but saw no action and is another prospect lacking experience.

Menendez has several top-notch frosh candidates in Valdis Svans of Brazil and Mahmood Gorjestani of Iran, but both are ineligible for varsity competition under present NCAA rules.—PALMER

The Spartan starting line-up follows:  
Gordon Huntze—goalie  
Dave Biddle—right fullback  
Lew Fellows—left fullback  
Jerry Nelson—right halfback  
Joe Battaglini—center halfback  
Tony Zenotto—left halfback  
Gordy Stroud—right wing  
Dietmar Demeter—inside right  
Jerry Koopman—center forward  
Abdul Mashal—inside left  
Perry Weddle—left wing

## CLASSIFIEDS

### Classified Rates:

25c a line first insertion  
20c a line succeeding insertion  
2 line minimum

### To Place an Ad:

Call at Student Affairs Office  
Room 16, Tower Hall  
No Phone Orders

### Transportation

Wish ride to Hayward 3:30 on MWF, LU 1-6854.

Foreign student needs ride both ways if possible. Branham Ln. or Kooser near Carter Ave. AN 4-0412.

Ride wanted from SJS to Los Gatos at 5:00 p.m. EL 4-7632.

Share ride from Oakland area MWF. Thornwall 3-4357.

Would like riders to and from SJS/Cherry-Chase area. Judy Henth. RE 6-0905.

### Rentals

Nr. college, lg. 4 rm. apt. 4 girls, college couple or 2 teachers, reasonable rent. 445 S. 8th St.

Men students, excellent food, nice room. 680 S. 5th. Ph. CY 3-7453.

Furn. 1 & 2 bedroom apt. 652 S. 4th. CY 4-5085 or AW 2-3420.

Male student share furn. apt. col. approved. 301 S. 5th. CY 7-1758.

Male share modern 4 bdrm. home with 3 col. stud. Campbell area. CY 7-7754.

Single male desires one bedroom apt. kitchen, bath. CY 2-8258.

1 or 2 bdrm. apts. from \$85.00. 385 S. 4th. apt. 5.

1 Bedroom apt. large room, garbage & water pd. 511 E. Reed St. CY 4-2468.

Swimming pool, 3 bks. to campus, 1 bdrm, furn. apt. lge. rms. incl. gar. & part util. \$35 per student. 686 S. 8th or call CY 3-8864.

Furn. apt. 2 bedroom | water and garbage pd. 453 S. 9th St. CY 3-3431 or AN 6-8726.

Three girls need one roommate. CY 8-1740. Rent \$32.50.

New 2 bedroom apt. near college 2 1/2 blocks on 6th. Wall to wall carpeting, new electric kitchen, draperies, all new furniture, sound proof walls and ceiling, plus numerous extras. Call Spartan Rental Service. Days CY 7-8877, eve. CY 7-8713.

Furn. 1 bedroom. 659 S. 9th St. Call CY 2-4549 after 6 p.m.

### For Sale

Girl's bike, almost new, three spd. 5th bk case. Call CY 2-4452 aft. 6 p.m.

51 Ford 6 cyl. straight stick, overdrive, clean. Nick Alesch. AX 6-2312.

1958 Vespa, good condition, price \$220. Call after 6 p.m. CY 2-9503.

Lease in good rooming hse, cook priv. \$27.50. Karl. CY 4-3964 after 7 p.m.

58 TR3 white ex. cond., extras, gd. tires. CH 6-9961 after 6 wknd.

Smith-Corona super silent portable typewriter for sale, excellent condition. \$70. OL 6-3202.

Columbia portable stereo, 90-day guarantee. CY 3-1292 after 3:00 p.m.

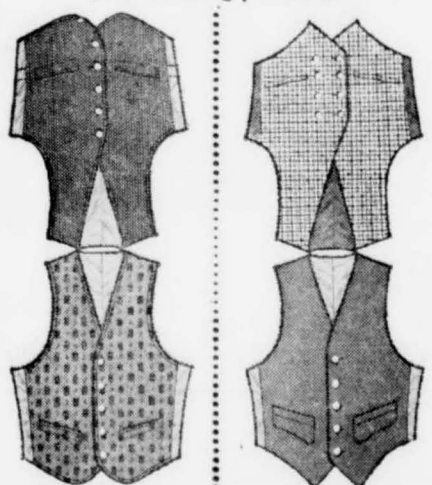
### Services

Typing (pic) at home, 170 S. 10th St. 8 a.m.-10 p.m. CY4-8864. Price paid dbl space 25c.

AS SEEN IN PLAYBOY  
THE RAMS HEAD SHOP

## You'll FLIP over the FLIP-TOP VEST

it reverses itself to double your wearing pleasure!



### CAN DO CORD

Luxurious 14-wale corduroy vest . . . one side cord, other mad madder print . . . witness new rounded front. It's Grodins for the best in the Wild West!

5.95

### DOUBLE-BREADED

It's all done with buttons! One side is double-breasted in a dashing district check . . . other side is single-breasted in red, gold or olive solid color flannel.

9.95

GRODINS  
OF CALIFORNIA

VALLEY FAIR

2801 Stevens Creek Blvd.

## SPANISH KITCHEN

39 E. SAN ANTONIO ST.

### S-P-E-C-I-A-L—

Saturdays & Sundays only  
(with ASB card)

Enchilada Dinner	\$1.04
Spanish Kitchen Special	\$1.25
Tamale Dinner	\$1.04
Chili Colorado Dinner	\$1.04
Taco Dinner	\$1.04
Steak Dinner	\$1.25
Chili Verde Dinner	\$1.04
Chili Rellano Dinner	\$1.04
Chicken Dinner	\$1.25

FOOD TO TAKE OUT

We Cater to Banquets and Parties

Phone CY 7-9950





In wrist-wrestling, news, advertising and circulation no one can top the San Francisco Examiner, for 73 years the number one paper in northern California.

When writers stare into space, they are working. Here, in working condition, are four writers who keep the San Francisco Examiner a cut above the distinctive.

### DON WHITE

...is our young financial editor who has your money in mind no matter where it may be at the moment.

### CHARLES EINSTEIN

...has a 200,000 word vocabulary and an intriguing interest in the opposite sex. Most of both come through in his daily column.

### MONIQUE BENOIT

...is a French girl from Paris who writes a witty advice-to-the-lovelorn column.

### PRESCOTT SULLIVAN

He understands the pelican in the fisherman's scheme of things. He had an icicle named after him at the Winter Olympics. He is the best and the most humorous sportswriter in the business.

Incidentally, the San Francisco Examiner is printed on white paper—very easy to read.

**The San Francisco Examiner  
is always available on campus**

Just contact Bob Martin,  
YOrkshire 7-6012, for full details